

SERPINB3 Antibody
Purified Mouse Monoclonal Antibody (Mab)
Catalog # AM8571b**Specification**

SERPINB3 Antibody - Product Information

Application	WB,E
Primary Accession	P29508
Reactivity	Human
Host	Mouse
Clonality	monoclonal
Isotype	IgG2b,k
Calculated MW	44565

SERPINB3 Antibody - Additional Information**Gene ID** 6317**Other Names**

SerpB3, Protein T4-A, Squamous cell carcinoma antigen 1, SCCA-1, SERPINB3, SCCA, SCCA1

Target/Specificity

This antibody is generated from a mouse immunized with a recombinant between 1-390 amino acids from human.

Dilution

WB~~1:4000

E~~Use at an assay dependent concentration.

Format

Purified monoclonal antibody supplied in PBS with 0.09% (W/V) sodium azide. This antibody is purified through a protein G column, followed by dialysis against PBS.

Storage

Maintain refrigerated at 2-8°C for up to 2 weeks. For long term storage store at -20°C in small aliquots to prevent freeze-thaw cycles.

Precautions

SERPINB3 Antibody is for research use only and not for use in diagnostic or therapeutic procedures.

SERPINB3 Antibody - Protein Information**Name** SERPINB3**Synonyms** SCCA, SCCA1**Function** May act as a papain-like cysteine protease inhibitor to modulate the host immune

response against tumor cells. Also functions as an inhibitor of UV-induced apoptosis via suppression of the activity of c-Jun NH(2)-terminal kinase (JNK1).

Cellular Location

Cytoplasm. Note=Seems to also be secreted in plasma by cancerous cells but at a low level

Tissue Location

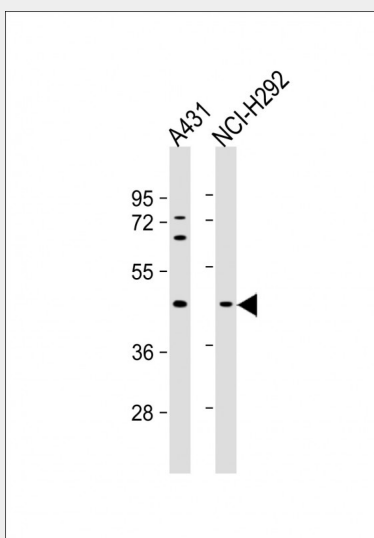
Squamous cells. Expressed in some hepatocellular carcinoma (at protein level).

SERPINB3 Antibody - Protocols

Provided below are standard protocols that you may find useful for product applications.

- [Western Blot](#)
- [Blocking Peptides](#)
- [Dot Blot](#)
- [Immunohistochemistry](#)
- [Immunofluorescence](#)
- [Immunoprecipitation](#)
- [Flow Cytometry](#)
- [Cell Culture](#)

SERPINB3 Antibody - Images



All lanes : Anti-SERPINB3 at 1:4000 dilution Lane 1: A431 whole cell lysate Lane 2: NCI-H292 whole cell lysate Lysates/proteins at 20 µg per lane. Secondary Goat Anti-mouse IgG, (H+L), Peroxidase conjugated at 1/10000 dilution. Predicted band size : 45 kDa Blocking/Dilution buffer: 5% NFD/MTBST.

SERPINB3 Antibody - Background

May act as a papain-like cysteine protease inhibitor to modulate the host immune response against tumor cells. Also functions as an inhibitor of UV-induced apoptosis via suppression of the activity of c-Jun NH(2)-terminal kinase (JNK1).

SERPINB3 Antibody - References

Suminami Y.,et al.Biochem. Biophys. Res. Commun. 181:51-58(1991).
Schneider S.S.,et al.Proc. Natl. Acad. Sci. U.S.A. 92:3147-3151(1995).
Suminami Y.,et al.Submitted (JUL-2000) to the EMBL/GenBank/DDBJ databases.
Moore P.L.,et al.J. Biol. Chem. 278:46709-46717(2003).
Tong C.,et al.Submitted (FEB-2003) to the EMBL/GenBank/DDBJ databases.