

GLS2 Antibody
Purified Mouse Monoclonal Antibody (Mab)
Catalog # AM8595b**Specification**

GLS2 Antibody - Product Information

Application	WB, IHC-P,E
Primary Accession	Q9UI32
Reactivity	Human, Mouse
Host	Mouse
Clonality	monoclonal
Isotype	IgG1,k
Calculated MW	66323

GLS2 Antibody - Additional Information**Gene ID** 27165**Other Names**

Glutaminase liver isoform, mitochondrial, GLS, 3.5.1.2, L-glutaminase, L-glutamine amidohydrolase, GLS2, GA

Target/Specificity

This GLS2 antibody is generated from a mouse immunized with a recombinant protein of human GLS2.

Dilution

WB~~1:1000-1:2000

IHC-P~~1:25

E~~Use at an assay dependent concentration.

Format

Purified monoclonal antibody supplied in PBS with 0.09% (W/V) sodium azide. This antibody is purified through a protein G column, followed by dialysis against PBS.

Storage

Maintain refrigerated at 2-8°C for up to 2 weeks. For long term storage store at -20°C in small aliquots to prevent freeze-thaw cycles.

Precautions

GLS2 Antibody is for research use only and not for use in diagnostic or therapeutic procedures.

GLS2 Antibody - Protein Information**Name** GLS2**Synonyms** GA

Function Plays an important role in the regulation of glutamine catabolism. Promotes mitochondrial respiration and increases ATP generation in cells by catalyzing the synthesis of glutamate and alpha- ketoglutarate. Increases cellular anti-oxidant function via NADH and glutathione production. May play a role in preventing tumor proliferation.

Cellular Location

Mitochondrion.

Tissue Location

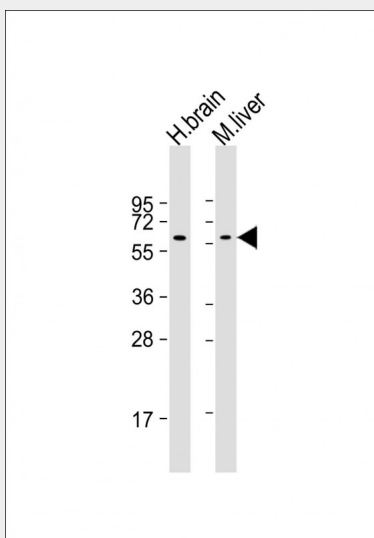
Highly expressed in liver. Expressed in brain and pancreas. Not observed in heart, placenta, lung, skeletal muscle and kidney. Expression is significantly reduced in hepatocellular carcinomas.

GLS2 Antibody - Protocols

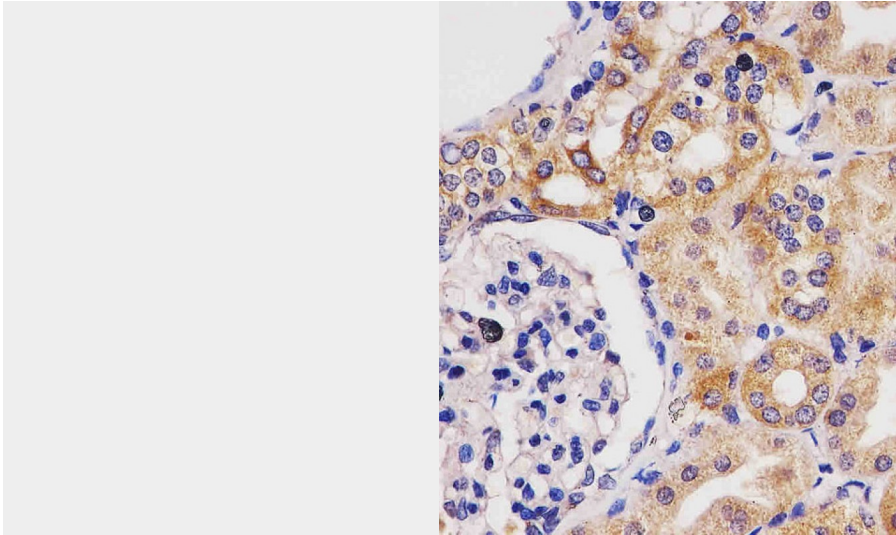
Provided below are standard protocols that you may find useful for product applications.

- [Western Blot](#)
- [Blocking Peptides](#)
- [Dot Blot](#)
- [Immunohistochemistry](#)
- [Immunofluorescence](#)
- [Immunoprecipitation](#)
- [Flow Cytometry](#)
- [Cell Culture](#)

GLS2 Antibody - Images



All lanes : Anti-GLS2 Antibody at 1:1000-1:2000 dilution Lane 1: human brain lysate Lane 2: mouse liver lysate Lysates/proteins at 20 µg per lane. Secondary Goat Anti-mouse IgG, (H+L), Peroxidase conjugated at 1/10000 dilution. Predicted band size : 66 kDa Blocking/Dilution buffer: 5% NFD/MTBST.



AM8595b staining GLS2 in human kidney tissue sections by Immunohistochemistry (IHC-P - paraformaldehyde-fixed, paraffin-embedded sections). Tissue was fixed with formaldehyde and blocked with 3% BSA for 0.5 hour at room temperature; antigen retrieval was by heat mediation with a citrate buffer (pH6). Samples were incubated with primary antibody (1/25) for 1 hour at 37°C. A undiluted biotinylated goat polyvalent antibody was used as the secondary antibody.

GLS2 Antibody - Background

Plays an important role in the regulation of glutamine catabolism. Promotes mitochondrial respiration and increases ATP generation in cells by catalyzing the synthesis of glutamate and alpha-ketoglutarate. Increases cellular anti-oxidant function via NADH and glutathione production. May play a role in preventing tumor proliferation.

GLS2 Antibody - References

Gomez-Fabre P.M., et al. *Biochem. J.* 345:365-375(2000).
Perez-Gomez C., et al. *Biochem. J.* 370:771-784(2003).
Chavez R.A., et al. Submitted (JAN-2000) to the EMBL/GenBank/DDBJ databases.
Ota T., et al. *Nat. Genet.* 36:40-45(2004).
Scherer S.E., et al. *Nature* 440:346-351(2006).