

**MMP1 Antibody**  
**Purified Mouse Monoclonal Antibody (Mab)**  
**Catalog # AM8598b****Specification**

---

**MMP1 Antibody - Product Information**

Application	WB,E
Primary Accession	<a href="#">P03956</a>
Reactivity	Human
Host	Mouse
Clonality	monoclonal
Isotype	IgG2a
Calculated MW	54007

**MMP1 Antibody - Additional Information****Gene ID** 4312**Other Names**

Interstitial collagenase, 3.4.24.7, Fibroblast collagenase, Matrix metalloproteinase-1, MMP-1, 22 kDa interstitial collagenase, 27 kDa interstitial collagenase, MMP1, CLG

**Target/Specificity**

This antibody is generated from a mouse immunized with a recombinant protein from human.

**Dilution**

WB~~1:2000

E~~Use at an assay dependent concentration.

**Format**

Purified monoclonal antibody supplied in PBS with 0.09% (W/V) sodium azide. This antibody is purified through a protein G column, followed by dialysis against PBS.

**Storage**

Maintain refrigerated at 2-8°C for up to 2 weeks. For long term storage store at -20°C in small aliquots to prevent freeze-thaw cycles.

**Precautions**

MMP1 Antibody is for research use only and not for use in diagnostic or therapeutic procedures.

**MMP1 Antibody - Protein Information****Name** MMP1**Synonyms** CLG

**Function** Cleaves collagens of types I, II, and III at one site in the helical domain. Also cleaves collagens of types VII and X (PubMed:[1645757](#), PubMed:[2153297](#), PubMed:[2557822](#)). In case of

HIV infection, interacts and cleaves the secreted viral Tat protein, leading to a decrease in neuronal Tat's mediated neurotoxicity (PubMed:[16807369](#)).

#### Cellular Location

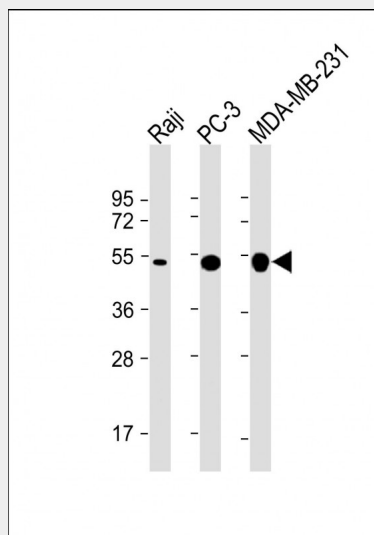
Secreted, extracellular space, extracellular matrix

### MMP1 Antibody - Protocols

Provided below are standard protocols that you may find useful for product applications.

- [Western Blot](#)
- [Blocking Peptides](#)
- [Dot Blot](#)
- [Immunohistochemistry](#)
- [Immunofluorescence](#)
- [Immunoprecipitation](#)
- [Flow Cytometry](#)
- [Cell Culture](#)

### MMP1 Antibody - Images



All lanes : Anti-MMP1 Antibody at 1:2000 dilution Lane 1: Raji whole cell lysate Lane 2: PC-3 whole cell lysate Lane 3: MDA-MB-231 whole cell lysate Lysates/proteins at 20 µg per lane. Secondary Goat Anti-mouse IgG, (H+L), Peroxidase conjugated at 1/10000 dilution. Predicted band size : 52/55 kDa Blocking/Dilution buffer: 5% NFDM/TBST.

### MMP1 Antibody - Background

Cleaves collagens of types I, II, and III at one site in the helical domain. Also cleaves collagens of types VII and X. In case of HIV infection, interacts and cleaves the secreted viral Tat protein, leading to a decrease in neuronal Tat's mediated neurotoxicity.

### MMP1 Antibody - References

Templeton N.S.,et al.Cancer Res. 50:5431-5437(1990).  
Whitham S.E.,et al.Biochem. J. 240:913-916(1986).  
Goldberg G.I.,et al.J. Biol. Chem. 261:6600-6605(1986).

Lin D.,et al.Submitted (DEC-1996) to the EMBL/GenBank/DDBJ databases.  
Kalnine N.,et al.Submitted (OCT-2004) to the EMBL/GenBank/DDBJ databases.