

WBP2 Antibody (C-term)
Purified Mouse Monoclonal Antibody (Mab)
Catalog # AM8599b**Specification**

WBP2 Antibody (C-term) - Product Information

Application	WB,E
Primary Accession	O969T9
Reactivity	Human, Mouse
Host	Mouse
Clonality	monoclonal
Isotype	IgG1
Calculated MW	28087

WBP2 Antibody (C-term) - Additional Information**Gene ID** 23558**Other Names**

WW domain-binding protein 2, WBP-2, WBP2

Target/Specificity

This WBP2 antibody is generated from a mouse immunized with a recombinant protein between 1-261 amino acids from the C-terminal region of human WBP2.

Dilution

WB~~1:2000

E~~Use at an assay dependent concentration.

Format

Purified monoclonal antibody supplied in PBS with 0.09% (W/V) sodium azide. This antibody is purified through a protein G column, followed by dialysis against PBS.

Storage

Maintain refrigerated at 2-8°C for up to 2 weeks. For long term storage store at -20°C in small aliquots to prevent freeze-thaw cycles.

Precautions

WBP2 Antibody (C-term) is for research use only and not for use in diagnostic or therapeutic procedures.

WBP2 Antibody (C-term) - Protein Information**Name** WBP2 ([HGNC:12738](#))

Function Acts as a transcriptional coactivator of estrogen and progesterone receptors (ESR1 and PGR) upon hormone activation (PubMed:[16772533](#)). In presence of estrogen, binds to ESR1-responsive promoters (PubMed:[16772533](#)). Synergizes with YAP1 to enhance PGR activity

(PubMed:[16772533](#)). Modulates expression of post-synaptic scaffolding proteins via regulation of ESR1, ESR2 and PGR (By similarity).

Cellular Location

Cytoplasm. Nucleus. Note=Translocates from cytoplasm to nucleus when phosphorylated.

Tissue Location

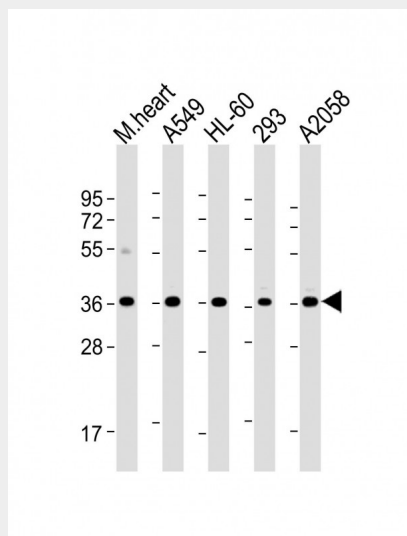
Ubiquitous.

WBP2 Antibody (C-term) - Protocols

Provided below are standard protocols that you may find useful for product applications.

- [Western Blot](#)
- [Blocking Peptides](#)
- [Dot Blot](#)
- [Immunohistochemistry](#)
- [Immunofluorescence](#)
- [Immunoprecipitation](#)
- [Flow Cytometry](#)
- [Cell Culture](#)

WBP2 Antibody (C-term) - Images



All lanes : Anti-WBP2 Antibody (C-term) at 1:2000 dilution Lane 1: mouse heart lysate Lane 2: A549 whole cell lysate Lane 3: HL-60 whole cell lysate Lane 4: 293 whole cell lysate Lane 5: A2058 whole cell lysate Lysates/proteins at 20 µg per lane. Secondary Goat Anti-mouse IgG, (H+L), Peroxidase conjugated at 1/10000 dilution. Predicted band size : 28/32 kDa Blocking/Dilution buffer: 5% NFDm/TBST.

WBP2 Antibody (C-term) - References

Chen H.I.,et al.J. Biol. Chem. 272:17070-17077(1997).
Pirozzi G.,et al.J. Biol. Chem. 272:14611-14616(1997).
Burkard T.R.,et al.BMC Syst. Biol. 5:17-17(2011).