

**AFP Antibody**  
**Purified Mouse Monoclonal Antibody (Mab)**  
**Catalog # AM8611b****Specification**

---

**AFP Antibody - Product Information**

Application	WB, IHC-P,E
Primary Accession	<a href="#">P02771</a>
Reactivity	Human
Host	Mouse
Clonality	monoclonal
Isotype	IgG2b,k
Calculated MW	68678

**AFP Antibody - Additional Information****Gene ID** 174**Other Names**

Alpha-fetoprotein, Alpha-1-fetoprotein, Alpha-fetoglobulin, AFP, HPAFP

**Target/Specificity**

This AFP antibody is generated from a mouse immunized with a KLH conjugated synthetic peptide between 281-609 amino acids from human AFP.

**Dilution**

WB~~1:2000

IHC-P~~1:25

E~~Use at an assay dependent concentration.

**Format**

Purified monoclonal antibody supplied in PBS with 0.09% (W/V) sodium azide. This antibody is purified through a protein G column, followed by dialysis against PBS.

**Storage**

Maintain refrigerated at 2-8°C for up to 2 weeks. For long term storage store at -20°C in small aliquots to prevent freeze-thaw cycles.

**Precautions**

AFP Antibody is for research use only and not for use in diagnostic or therapeutic procedures.

**AFP Antibody - Protein Information****Name** AFP**Synonyms** HPAFP**Function** Binds copper, nickel, and fatty acids as well as, and bilirubin less well than, serum

albumin. Only a small percentage (less than 2%) of the human AFP shows estrogen-binding properties.

#### Cellular Location

Secreted.

#### Tissue Location

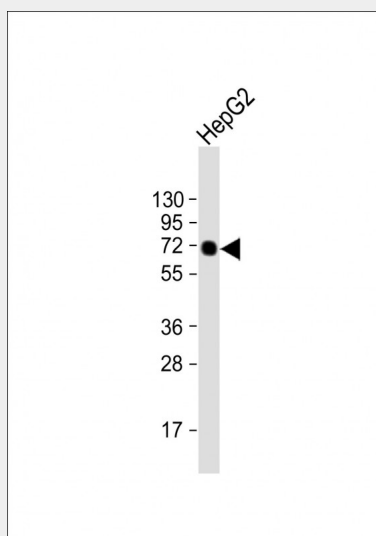
Plasma. Synthesized by the fetal liver and yolk sac

### AFP Antibody - Protocols

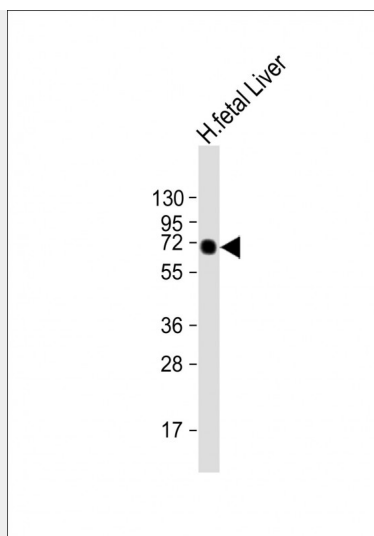
Provided below are standard protocols that you may find useful for product applications.

- [Western Blot](#)
- [Blocking Peptides](#)
- [Dot Blot](#)
- [Immunohistochemistry](#)
- [Immunofluorescence](#)
- [Immunoprecipitation](#)
- [Flow Cytometry](#)
- [Cell Culture](#)

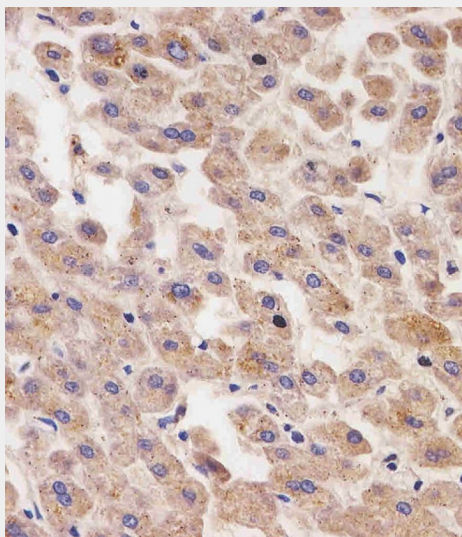
### AFP Antibody - Images



Anti-AFP Antibody at 1:500 dilution + HepG2 whole cell lysate Lysates/proteins at 20 µg per lane. Secondary Goat Anti-mouse IgG, (H+L), Peroxidase conjugated at 1/10000 dilution. Predicted band size : 68 kDa Blocking/Dilution buffer: 5% NFDM/TBST.



Anti-AFP Antibody at 1:2000 dilution + human fetal Liver lysate Lysates/proteins at 20 µg per lane. Secondary Goat Anti-mouse IgG, (H+L), Peroxidase conjugated at 1/10000 dilution. Predicted band size : 68 kDa Blocking/Dilution buffer: 5% NFDM/TBST.



AM8611b staining AFP in human liver tissue sections by Immunohistochemistry (IHC-P - paraformaldehyde-fixed, paraffin-embedded sections). Tissue was fixed with formaldehyde and blocked with 3% BSA for 0.5 hour at room temperature; antigen retrieval was by heat mediation with a citrate buffer (pH6). Samples were incubated with primary antibody (1/25) for 1 hours at 37°C. A undiluted biotinylated goat polyvalent antibody was used as the secondary antibody.

#### AFP Antibody - Background

Binds copper, nickel, and fatty acids as well as, and bilirubin less well than, serum albumin. Only a small percentage (less than 2%) of the human AFP shows estrogen-binding properties.

#### AFP Antibody - References

- Morinaga T., et al. Proc. Natl. Acad. Sci. U.S.A. 80:4604-4608(1983).
- Gibbs P.E.M., et al. Biochemistry 26:1332-1343(1987).
- Ota T., et al. Nat. Genet. 36:40-45(2004).
- Sakai M., et al. J. Biol. Chem. 260:5055-5060(1985).
- McVey J.H., et al. Hum. Mol. Genet. 2:379-384(1993).

