

**ITGA11 Antibody**  
**Purified Mouse Monoclonal Antibody (Mab)**  
**Catalog # AM8612b**

**Specification**

---

**ITGA11 Antibody - Product Information**

|                   |                        |
|-------------------|------------------------|
| Application       | WB,E                   |
| Primary Accession | <a href="#">O9UKX5</a> |
| Reactivity        | Human                  |
| Host              | Mouse                  |
| Clonality         | monoclonal             |
| Isotype           | IgG2b,k                |
| Calculated MW     | 133470                 |

**ITGA11 Antibody - Additional Information**

**Gene ID** 22801

**Other Names**

Integrin alpha-11, ITGA11

**Target/Specificity**

This ITGA11 antibody is generated from a mouse immunized with a KLH conjugated synthetic peptide between 675-880 amino acids from human ITGA11.

**Dilution**

WB~~1:2000

E~~Use at an assay dependent concentration.

**Format**

Purified monoclonal antibody supplied in PBS with 0.09% (W/V) sodium azide. This antibody is purified through a protein G column, followed by dialysis against PBS.

**Storage**

Maintain refrigerated at 2-8°C for up to 2 weeks. For long term storage store at -20°C in small aliquots to prevent freeze-thaw cycles.

**Precautions**

ITGA11 Antibody is for research use only and not for use in diagnostic or therapeutic procedures.

**ITGA11 Antibody - Protein Information**

**Name** ITGA11

**Function** Integrin alpha-11/beta-1 is a receptor for collagen.

**Cellular Location**

Membrane; Single-pass type I membrane protein.

### Tissue Location

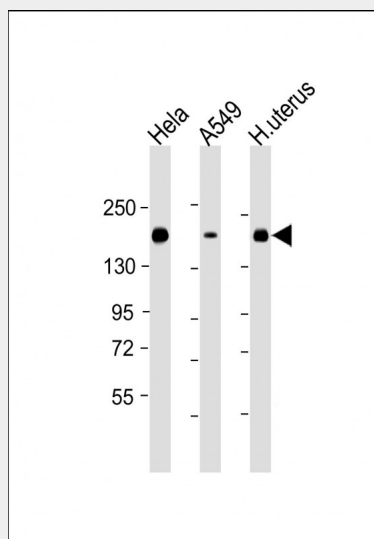
According to PubMed:10464311, highest levels of expression in uterus and heart, intermediate levels in skeletal muscle and intermediate to low levels in pancreas, kidney and placenta  
According to PubMed:10486209, also found in brain, colon, lung, small intestine, stomach, testis, salivary glands, thyroid glands and prostate. Very low levels in peripheral blood lymphocytes, fetal brain and fetal liver.

### ITGA11 Antibody - Protocols

Provided below are standard protocols that you may find useful for product applications.

- [Western Blot](#)
- [Blocking Peptides](#)
- [Dot Blot](#)
- [Immunohistochemistry](#)
- [Immunofluorescence](#)
- [Immunoprecipitation](#)
- [Flow Cytometry](#)
- [Cell Culture](#)

### ITGA11 Antibody - Images



All lanes : Anti-ITGA11 Antibody at 1:2000 dilution Lane 1: HeLa whole cell lysate Lane 2: A549 whole cell lysate Lane 3: human uterus lysate Lysates/proteins at 20 µg per lane. Secondary Goat Anti-mouse IgG, (H+L), Peroxidase conjugated at 1/10000 dilution. Predicted band size : 133 kDa Blocking/Dilution buffer: 5% NFDM/TBST.

### ITGA11 Antibody - Background

Integrin alpha-11/beta-1 is a receptor for collagen.

### ITGA11 Antibody - References

Lehnert K.,et al.Genomics 60:179-187(1999).  
Velling T.,et al.J. Biol. Chem. 274:25735-25742(1999).  
Zody M.C.,et al.Nature 440:671-675(2006).  
Xu Y.Y.,et al.Submitted (DEC-1998) to the EMBL/GenBank/DDBJ databases.

Pellinen T., et al. J. Cell Biol. 173:767-780(2006).