

MME Antibody (Center)
Purified Mouse Monoclonal Antibody (Mab)
Catalog # AM8618b**Specification**

MME Antibody (Center) - Product Information

Application	WB, FC, IHC-P-Leica,E
Primary Accession	P08473
Other Accession	Q5RE69 , P08049
Reactivity	Human
Host	Mouse
Clonality	monoclonal
Isotype	IgG1,k
Calculated MW	85514

MME Antibody (Center) - Additional Information**Gene ID** 4311**Other Names**

Neprilysin, 3.4.24.11, Atriopeptidase, Common acute lymphocytic leukemia antigen, CALLA, Enkephalinase, Neutral endopeptidase 24.11, NEP, Neutral endopeptidase, Skin fibroblast elastase, SFE, CD10, MME, EPN

Target/Specificity

This MME antibody is generated from a mouse immunized with a KLH conjugated synthetic peptide between 472-505 amino acids from the Central region of human MME.

Dilution

WB~~1:4000
FC~~1:25
IHC-P-Leica~~1:1000
E~~Use at an assay dependent concentration.

Format

Purified monoclonal antibody supplied in PBS with 0.09% (W/V) sodium azide. This antibody is purified through a protein G column, followed by dialysis against PBS.

Storage

Maintain refrigerated at 2-8°C for up to 2 weeks. For long term storage store at -20°C in small aliquots to prevent freeze-thaw cycles.

Precautions

MME Antibody (Center) is for research use only and not for use in diagnostic or therapeutic procedures.

MME Antibody (Center) - Protein Information

Name MME {ECO:0000303|PubMed:27588448, ECO:0000312|HGNC:HGNC:7154}

Function Thermolysin-like specificity, but is almost confined on acting on polypeptides of up to 30 amino acids (PubMed:[15283675](#), PubMed:[6208535](#), PubMed:[6349683](#), PubMed:[8168535](#)). Biologically important in the destruction of opioid peptides such as Met- and Leu-enkephalins by cleavage of a Gly-Phe bond (PubMed:[17101991](#), PubMed:[6349683](#)). Catalyzes cleavage of bradykinin, substance P and neurotensin peptides (PubMed:[6208535](#)). Able to cleave angiotensin-1, angiotensin-2 and angiotensin 1-9 (PubMed:[15283675](#), PubMed:[6349683](#)). Involved in the degradation of atrial natriuretic factor (ANF) and brain natriuretic factor (BNP(1-32)) (PubMed:[16254193](#), PubMed:[2531377](#), PubMed:[2972276](#)). Displays UV-inducible elastase activity toward skin preelastic and elastic fibers (PubMed:[20876573](#)).

Cellular Location

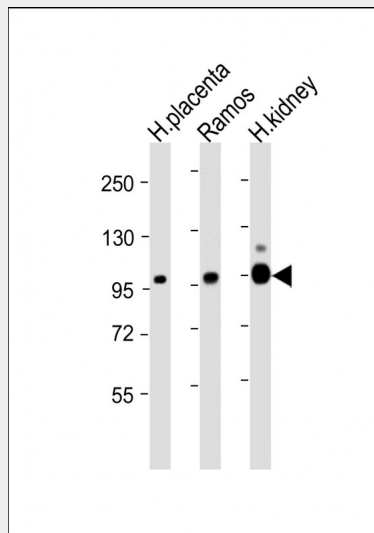
Cell membrane; Single-pass type II membrane protein

MME Antibody (Center) - Protocols

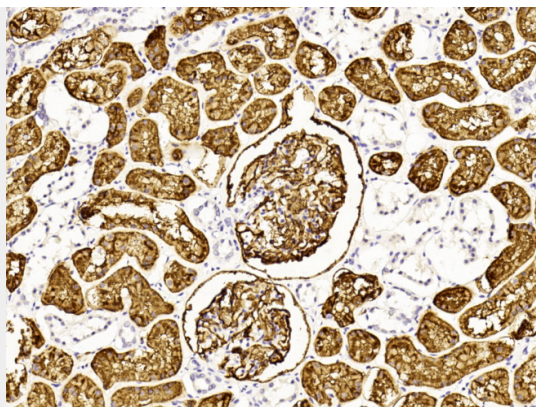
Provided below are standard protocols that you may find useful for product applications.

- [Western Blot](#)
- [Blocking Peptides](#)
- [Dot Blot](#)
- [Immunohistochemistry](#)
- [Immunofluorescence](#)
- [Immunoprecipitation](#)
- [Flow Cytometry](#)
- [Cell Culture](#)

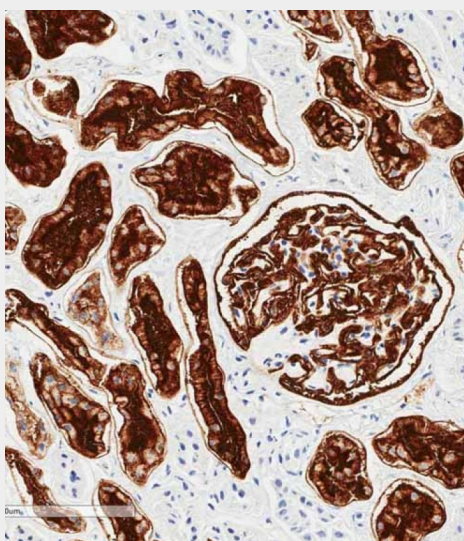
MME Antibody (Center) - Images



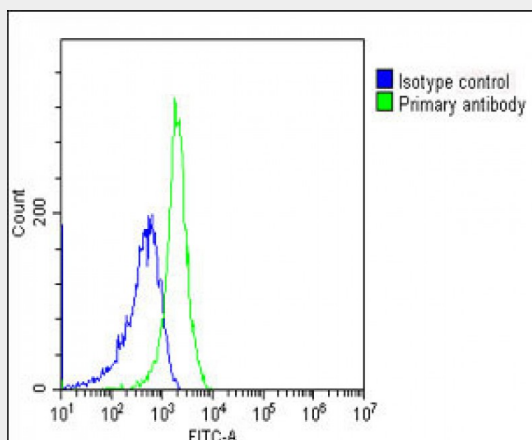
All lanes : Anti-MME Antibody (Center) at 1:4000 dilution Lane 1: Human placenta lysate Lane 2: Ramos whole cell lysate Lane 3: Human kidney lysate Lysates/proteins at 20 µg per lane. Secondary Goat Anti-mouse IgG, (H+L), Peroxidase conjugated at 1/10000 dilution. Predicted band size : 100 kDa Blocking/Dilution buffer: 5% NFDM/TBST.



Immunohistochemical analysis of paraffin-embedded Human kidney section using Pink1 (Cat#AM8618b). AM8618b was diluted at 1:1000 dilution. A undiluted biotinylated goat polyvalent antibody was used as the secondary, followed by DAB staining.



Immunohistochemical analysis of paraffin-embedded human kidney tissue using AM8618b performed on the Leica® BOND RXm. Tissue was fixed with formaldehyde at room temperature; antigen retrieval was by heat mediation with a EDTA buffer (pH9.0). Samples were incubated with primary antibody (1:1000) for 1 hours at room temperature. A undiluted biotinylated CRF Anti-Polyvalent HRP Polymer antibody was used as the secondary antibody.



Overlay histogram showing Jurkat cells stained with AM8618b (green line). The cells were fixed with 2% paraformaldehyde (10 min). The cells were then incubated in 2% bovine serum albumin to

block non-specific protein-protein interactions followed by the antibody (AM8618b, 1:25 dilution) for 60 min at 37°C. The secondary antibody used was Goat-Anti-Mouse IgG, DyLight® 488 Conjugated Highly Cross-Adsorbed(NH174309) at 1/200 dilution for 40 min at 37°C. Isotype control antibody (blue line) was mouse IgG1 (1µg/1x10⁶ cells) used under the same conditions. Acquisition of >10, 000 events was performed.

MME Antibody (Center) - Background

Thermolysin-like specificity, but is almost confined on acting on polypeptides of up to 30 amino acids (PubMed:15283675, PubMed:8168535). Biologically important in the destruction of opioid peptides such as Met- and Leu-enkephalins by cleavage of a Gly-Phe bond (PubMed:17101991). Able to cleave angiotensin-1, angiotensin-2 and angiotensin 1-9 (PubMed:15283675). Involved in the degradation of atrial natriuretic factor (ANF) (PubMed:2531377, PubMed:2972276). Displays UV-inducible elastase activity toward skin preelastic and elastic fibers (PubMed:20876573).

MME Antibody (Center) - References

Letarte M.,et al.J. Exp. Med. 168:1247-1253(1988).
Shipp M.A.,et al.Proc. Natl. Acad. Sci. U.S.A. 85:4819-4823(1988).
D'Adamio L.,et al.Proc. Natl. Acad. Sci. U.S.A. 86:7103-7107(1989).
Ota T.,et al.Nat. Genet. 36:40-45(2004).
Mural R.J.,et al.Submitted (SEP-2005) to the EMBL/GenBank/DDBJ databases.