

**human CD14 Antibody**  
**Purified Mouse Monoclonal Antibody (Mab)**  
**Catalog # AM8652b****Specification**

---

**human CD14 Antibody - Product Information**

Application	FC,E
Primary Accession	<a href="#">unknow</a>
Reactivity	Human
Host	Mouse
Clonality	monoclonal
Isotype	IgG2b

**human CD14 Antibody - Additional Information****Dilution**

FC~~1:50

E~~Use at an assay dependent concentration.

**Format**

Purified monoclonal antibody supplied in PBS with 0.09% (W/V) sodium azide. This antibody is purified through a protein G column, followed by dialysis against PBS.

**Storage**

Maintain refrigerated at 2-8°C for up to 2 weeks. For long term storage store at -20°C in small aliquots to prevent freeze-thaw cycles.

**Precautions**

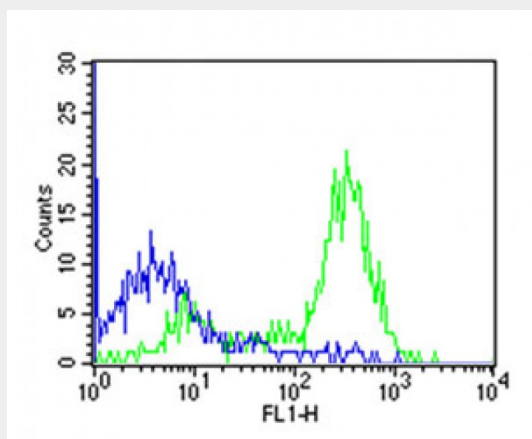
human CD14 Antibody is for research use only and not for use in diagnostic or therapeutic procedures.

**human CD14 Antibody - Protein Information****human CD14 Antibody - Protocols**

Provided below are standard protocols that you may find useful for product applications.

- [Western Blot](#)
- [Blocking Peptides](#)
- [Dot Blot](#)
- [Immunohistochemistry](#)
- [Immunofluorescence](#)
- [Immunoprecipitation](#)
- [Flow Cytometry](#)
- [Cell Culture](#)

**human CD14 Antibody - Images**



Overlay histogram showing human peripheral blood monocytes stained with CD14 antibody (green line). The cells were incubated in 2% bovine serum albumin to block non-specific protein-protein interactions followed by the antibody (1:50 dilution) for 60min at 37°C. The secondary antibody used was Goat Anti-Mouse IgG, DyLight® 488 Conjugated Highly Cross-Adsorbed (OJ192088) at 1/200 dilution for 40min at 37°C. Isotype control antibody (blue line) was mouse IgG2b (1µg/1x10<sup>6</sup> cells) used under the same conditions. Acquisition of >10,000 events was performed.