

human CD25 Antibody
Purified Mouse Monoclonal Antibody (Mab)
Catalog # AM8656b**Specification**

human CD25 Antibody - Product Information

| | |
|-------------------|------------------------|
| Application | FC,E |
| Primary Accession | unknow |
| Reactivity | Human |
| Host | Mouse |
| Clonality | monoclonal |
| Isotype | IgG2a |

human CD25 Antibody - Additional Information**Dilution**

FC~~1:50

E~~Use at an assay dependent concentration.

Format

Purified monoclonal antibody supplied in PBS with 0.09% (W/V) sodium azide. This antibody is purified through a protein G column, followed by dialysis against PBS.

Storage

Maintain refrigerated at 2-8°C for up to 2 weeks. For long term storage store at -20°C in small aliquots to prevent freeze-thaw cycles.

Precautions

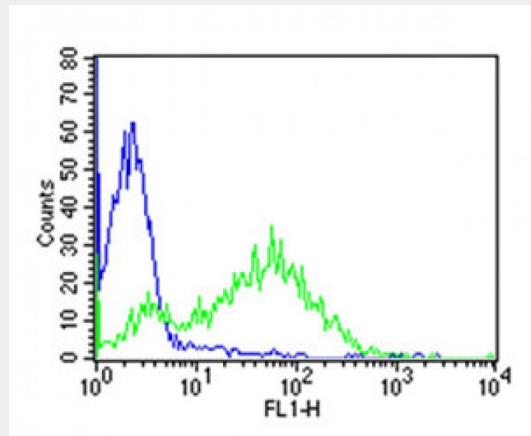
human CD25 Antibody is for research use only and not for use in diagnostic or therapeutic procedures.

human CD25 Antibody - Protein Information**human CD25 Antibody - Protocols**

Provided below are standard protocols that you may find useful for product applications.

- [Western Blot](#)
- [Blocking Peptides](#)
- [Dot Blot](#)
- [Immunohistochemistry](#)
- [Immunofluorescence](#)
- [Immunoprecipitation](#)
- [Flow Cytometry](#)
- [Cell Culture](#)

human CD25 Antibody - Images



Overlay histogram showing PHA-stimulated human peripheral blood lymphocytes stained with CD25 antibody (green line). The cells were incubated in 2% bovine serum albumin to block non-specific protein-protein interactions followed by the antibody (1:50 dilution) for 60min at 37°C. The secondary antibody used was Goat Anti-Mouse IgG, DyLight® 488 Conjugated Highly Cross-Adsorbed (OJ192088) at 1/200 dilution for 40min at 37°C. Isotype control antibody (blue line) was mouse IgG2a (1µg/1x10⁶ cells) used under the same conditions. Acquisition of >10,000 events was performed.