

**GDF11 Antibody**  
**Purified Mouse Monoclonal Antibody (Mab)**  
**Catalog # AM8665b****Specification**

---

**GDF11 Antibody - Product Information**

Application	WB,E
Primary Accession	<a href="#">O95390</a>
Reactivity	Human
Predicted	Human
Host	Mouse
Clonality	monoclonal
Isotype	IgG1, $\kappa$
Calculated MW	45091

**GDF11 Antibody - Additional Information****Gene ID** 10220**Other Names**

Growth/differentiation factor 11, GDF-11, Bone morphogenetic protein 11, BMP-11, GDF11, BMP11

**Target/Specificity**

This GDF11 antibody is generated from a mouse immunized with a recombinant protein from the human region of human GDF11.

**Dilution**

WB~~1:2000

E~~Use at an assay dependent concentration.

**Format**

Purified monoclonal antibody supplied in PBS with 0.09% (W/V) sodium azide. This antibody is purified through a protein G column, followed by dialysis against PBS.

**Storage**

Maintain refrigerated at 2-8°C for up to 2 weeks. For long term storage store at -20°C in small aliquots to prevent freeze-thaw cycles.

**Precautions**

GDF11 Antibody is for research use only and not for use in diagnostic or therapeutic procedures.

**GDF11 Antibody - Protein Information****Name** GDF11**Synonyms** BMP11 {ECO:0000303|PubMed:10075854}**Function** Secreted signal that acts globally to regulate anterior/posterior axial patterning during

development. May play critical roles in patterning both mesodermal and neural tissues (By similarity). It is required for proper vertebral patterning and orofacial development (PubMed:[31215115](#)). Signals through activin receptors type-2, ACVR2A and ACVR2B, and activin receptors type-1, ACVR1B, ACVR1C and TGFBR1 leading to the phosphorylation of SMAD2 and SMAD3 (PubMed:[28257634](#)).

#### Cellular Location

Secreted.

#### Tissue Location

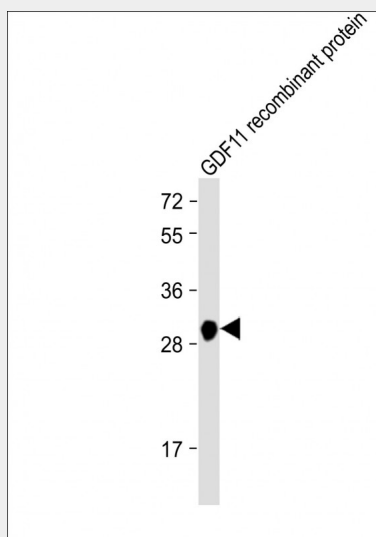
In the embryo, strong expression is seen in the palatal epithelia, including the medial edge epithelial and midline epithelial seam of the palatal shelves. Less pronounced expression is also seen throughout the palatal shelf and tongue mesenchyme

### GDF11 Antibody - Protocols

Provided below are standard protocols that you may find useful for product applications.

- [Western Blot](#)
- [Blocking Peptides](#)
- [Dot Blot](#)
- [Immunohistochemistry](#)
- [Immunofluorescence](#)
- [Immunoprecipitation](#)
- [Flow Cytometry](#)
- [Cell Culture](#)

### GDF11 Antibody - Images



Anti-GDF11 Antibody at 1:2000 dilution + GDF11 recombinant protein Lysates/proteins at 20 ng per lane. Secondary Goat Anti-mouse IgG, (H+L), Peroxidase conjugated at 1/10000 dilution. Predicted band size : 28 kDa Blocking/Dilution buffer: 5% NFDM/TBST.

### GDF11 Antibody - Background

Secreted signal that acts globally to specify positional identity along the anterior/posterior axis during development. Play critical roles in patterning both mesodermal and neural tissues and in

establishing the skeletal pattern.

### **GDF11 Antibody - References**

Gamer L.W., et al. Dev. Biol. 208:222-232(1999).  
McPherron A.C., et al. Nat. Genet. 22:260-264(1999).