

**MTHFD2 Antibody (C-term)**  
**Purified Mouse Monoclonal Antibody (Mab)**  
**Catalog # AM8667b****Specification**

---

**MTHFD2 Antibody (C-term) - Product Information**

Application	WB,E
Primary Accession	<a href="#">P13995</a>
Reactivity	Human, Mouse
Predicted	Human, Mouse
Host	Mouse
Clonality	monoclonal
Isotype	IgG1, $\kappa$
Calculated MW	37895

**MTHFD2 Antibody (C-term) - Additional Information****Gene ID** 10797**Other Names**

Bifunctional methylenetetrahydrofolate dehydrogenase/cyclohydrolase, mitochondrial, NAD-dependent methylenetetrahydrofolate dehydrogenase, 1.5.1.15, Methenyltetrahydrofolate cyclohydrolase, 3.5.4.9, MTHFD2, NMDMC

**Target/Specificity**

This MTHFD2 antibody is generated from a mouse immunized with a KLH conjugated synthetic peptide between 266-299 amino acids from the C-terminal region of human MTHFD2.

**Dilution**

WB~~1:4000

E~~Use at an assay dependent concentration.

**Format**

Purified monoclonal antibody supplied in PBS with 0.09% (W/V) sodium azide. This antibody is purified through a protein G column, followed by dialysis against PBS.

**Storage**

Maintain refrigerated at 2-8°C for up to 2 weeks. For long term storage store at -20°C in small aliquots to prevent freeze-thaw cycles.

**Precautions**

MTHFD2 Antibody (C-term) is for research use only and not for use in diagnostic or therapeutic procedures.

**MTHFD2 Antibody (C-term) - Protein Information****Name** MTHFD2

## Synonyms NMDMC

**Function** Although its dehydrogenase activity is NAD-specific, it can also utilize NADP at a reduced efficiency.

## Cellular Location

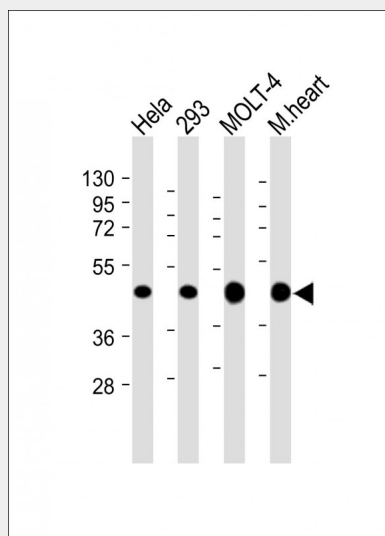
Mitochondrion.

## MTHFD2 Antibody (C-term) - Protocols

Provided below are standard protocols that you may find useful for product applications.

- [Western Blot](#)
- [Blocking Peptides](#)
- [Dot Blot](#)
- [Immunohistochemistry](#)
- [Immunofluorescence](#)
- [Immunoprecipitation](#)
- [Flow Cytometry](#)
- [Cell Culture](#)

## MTHFD2 Antibody (C-term) - Images



All lanes : Anti-MTHFD2 Antibody (C-term) at 1:4000 dilution Lane 1: HeLa whole cell lysate Lane 2: 293 whole cell lysate Lane 3: MOLT-4 whole cell lysate Lane 4: Mouse heart lysate Lysates/proteins at 20 µg per lane. Secondary Goat Anti-mouse IgG, (H+L), Peroxidase conjugated at 1/10000 dilution. Predicted band size : 38 kDa Blocking/Dilution buffer: 5% NFDN/TBST.

## MTHFD2 Antibody (C-term) - References

Peri K.G.,et al.Nucleic Acids Res. 17:8853-8853(1989).  
Ota T.,et al.Nat. Genet. 36:40-45(2004).  
Suzuki Y.,et al.Submitted (APR-2005) to the EMBL/GenBank/DDBJ databases.  
Mural R.J.,et al.Submitted (SEP-2005) to the EMBL/GenBank/DDBJ databases.  
Hillier L.W.,et al.Nature 434:724-731(2005).