

KLF4 Antibody
Purified Mouse Monoclonal Antibody (Mab)
Catalog # AM8674b**Specification**

KLF4 Antibody - Product Information

Application	WB,E
Primary Accession	O43474
Reactivity	Human, Mouse
Predicted	Human
Host	Mouse
Clonality	monoclonal
Isotype	IgG1, κ
Calculated MW	54671

KLF4 Antibody - Additional Information**Gene ID** 9314**Other Names**

Krueppel-like factor 4, Epithelial zinc finger protein EZF, Gut-enriched krueppel-like factor, KLF4, EZF, GKLF

Target/Specificity

This KLF4 antibody is generated from a mouse immunized with a recombinant protein from the human region of human KLF4.

Dilution

WB~~1:500-1:1000

E~~Use at an assay dependent concentration.

Format

Purified monoclonal antibody supplied in PBS with 0.09% (W/V) sodium azide. This antibody is purified through a protein G column, followed by dialysis against PBS.

Storage

Maintain refrigerated at 2-8°C for up to 2 weeks. For long term storage store at -20°C in small aliquots to prevent freeze-thaw cycles.

Precautions

KLF4 Antibody is for research use only and not for use in diagnostic or therapeutic procedures.

KLF4 Antibody - Protein Information**Name** KLF4 ([HGNC:6348](#))**Synonyms** EZF, GKLF

Function Transcription factor; can act both as activator and as repressor. Binds the 5'-CACCC-3' core sequence. Binds to the promoter region of its own gene and can activate its own transcription. Regulates the expression of key transcription factors during embryonic development. Plays an important role in maintaining embryonic stem cells, and in preventing their differentiation. Required for establishing the barrier function of the skin and for postnatal maturation and maintenance of the ocular surface. Involved in the differentiation of epithelial cells and may also function in skeletal and kidney development. Contributes to the down-regulation of p53/TP53 transcription.

Cellular Location

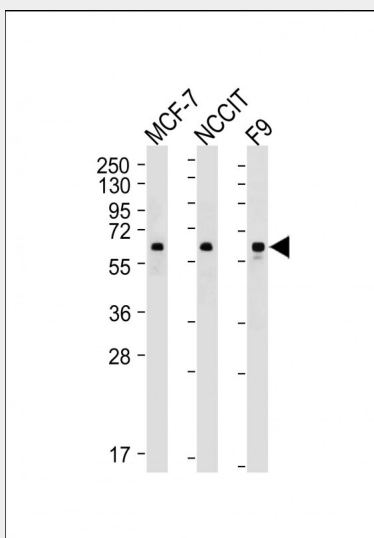
Nucleus {ECO:0000250|UniProtKB:Q60793}. Cytoplasm {ECO:0000250|UniProtKB:Q60793}

KLF4 Antibody - Protocols

Provided below are standard protocols that you may find useful for product applications.

- [Western Blot](#)
- [Blocking Peptides](#)
- [Dot Blot](#)
- [Immunohistochemistry](#)
- [Immunofluorescence](#)
- [Immunoprecipitation](#)
- [Flow Cytometry](#)
- [Cell Culture](#)

KLF4 Antibody - Images



All lanes : Anti-KLF4 Antibody at 1:500-1:1000 dilution Lane 1: MCF-7 whole cell lysate Lane 2: NCCIT whole cell lysate Lane 3: F9 whole cell lysate Lysates/proteins at 20 µg per lane. Secondary Goat Anti-mouse IgG, (H+L), Peroxidase conjugated at 1/10000 dilution. Predicted band size : 55 kDa Blocking/Dilution buffer: 5% NFDN/TBST.

KLF4 Antibody - Background

Transcription factor; can act both as activator and as repressor. Binds the 5'-CACCC-3' core sequence. Binds to the promoter region of its own gene and can activate its own transcription. Regulates the expression of key transcription factors during embryonic development. Plays an

important role in maintaining embryonic stem cells, and in preventing their differentiation. Required for establishing the barrier function of the skin and for postnatal maturation and maintenance of the ocular surface. Involved in the differentiation of epithelial cells and may also function in skeletal and kidney development. Contributes to the down-regulation of p53/TP53 transcription.

KLF4 Antibody - References

Yet S.-F.,et al.J. Biol. Chem. 273:1026-1031(1998).
Foster K.W.,et al.Cell Growth Differ. 10:423-434(1999).
Camacho-Vanegas O.,et al.FASEB J. 27:432-436(2013).
Garrett-Sinha L.A.,et al.Submitted (SEP-1996) to the EMBL/GenBank/DDBJ databases.
Ota T.,et al.Nat. Genet. 36:40-45(2004).