

PLIN3 Antibody
Purified Mouse Monoclonal Antibody (Mab)
Catalog # AM8697b

Specification

PLIN3 Antibody - Product Information

Application	WB, FC,E
Primary Accession	O60664
Reactivity	Human
Host	Mouse
Clonality	monoclonal
Isotype	IgG2a,k
Calculated MW	47075

PLIN3 Antibody - Additional Information

Gene ID 10226

Other Names

Perilipin-3, 47 kDa mannose 6-phosphate receptor-binding protein, 47 kDa MPR-binding protein, Cargo selection protein TIP47, Mannose-6-phosphate receptor-binding protein 1, Placental protein 17, PP17, PLIN3, M6PRBP1, TIP47

Target/Specificity

This PLIN3 antibody is generated from a mouse immunized with a KLH conjugated synthetic peptide between 1-434 amino acids from human PLIN3.

Dilution

WB~~1:2000

FC~~1:25

E~~Use at an assay dependent concentration.

Format

Purified monoclonal antibody supplied in PBS with 0.09% (W/V) sodium azide. This antibody is purified through a protein G column, followed by dialysis against PBS.

Storage

Maintain refrigerated at 2-8°C for up to 2 weeks. For long term storage store at -20°C in small aliquots to prevent freeze-thaw cycles.

Precautions

PLIN3 Antibody is for research use only and not for use in diagnostic or therapeutic procedures.

PLIN3 Antibody - Protein Information

Name PLIN3

Synonyms M6PRBP1, TIP47 {ECO:0000303|PubMed:95901

Function Structural component of lipid droplets, which is required for the formation and maintenance of lipid storage droplets (PubMed:[34077757](#)). Required for the transport of mannose 6-phosphate receptors (MPR) from endosomes to the trans-Golgi network (PubMed:[9590177](#)).

Cellular Location

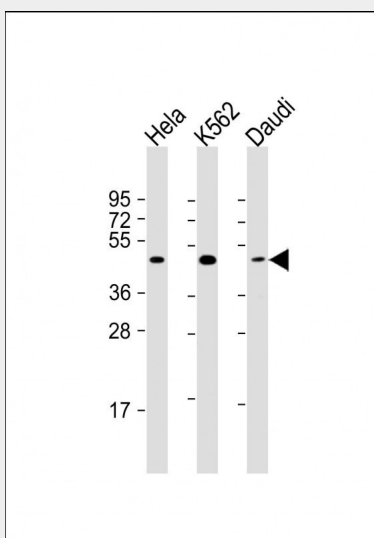
Lipid droplet. Endosome membrane; Peripheral membrane protein; Cytoplasmic side. Cytoplasm. Note=Membrane associated on endosomes (PubMed:15545278). Detected in the envelope and the core of lipid bodies and in lipid sails (PubMed:15545278)

PLIN3 Antibody - Protocols

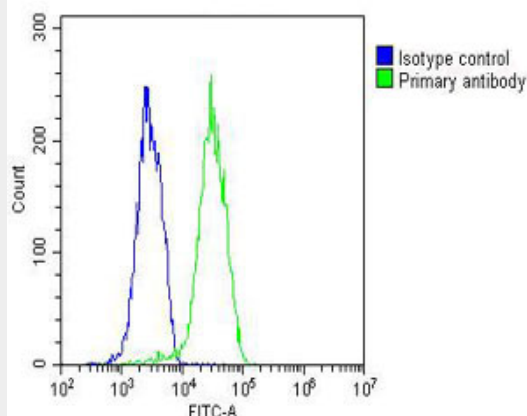
Provided below are standard protocols that you may find useful for product applications.

- [Western Blot](#)
- [Blocking Peptides](#)
- [Dot Blot](#)
- [Immunohistochemistry](#)
- [Immunofluorescence](#)
- [Immunoprecipitation](#)
- [Flow Cytometry](#)
- [Cell Culture](#)

PLIN3 Antibody - Images



All lanes : Anti-PLIN3 Antibody at 1:2000 dilution Lane 1: HeLa whole cell lysate Lane 2: K562 whole cell lysate Lane 3: Daudi whole cell lysate Lysates/proteins at 20 µg per lane. Secondary Goat Anti-mouse IgG, (H+L), Peroxidase conjugated at 1/10000 dilution. Predicted band size : 47 kDa Blocking/Dilution buffer: 5% NFDm/TBST.



Overlay histogram showing HUVEC cells stained with AM8697b (green line). The cells were fixed with 2% paraformaldehyde (10 min) and then permeabilized with 90% methanol for 10 min. The cells were then incubated in 2% bovine serum albumin to block non-specific protein-protein interactions followed by the antibody (AM8697b, 1:25 dilution) for 60 min at 37°C. The secondary antibody used was Goat-Anti-Mouse IgG, DyLight® 488 Conjugated Highly Cross-Adsorbed (OJ192088) at 1/200 dilution for 40 min at 37°C. Isotype control antibody (blue line) was mouse IgG1 (1 µg/1x10⁶ cells) used under the same conditions. Acquisition of >10,000 events was performed.

PLIN3 Antibody - Background

Required for the transport of mannose 6-phosphate receptors (MPR) from endosomes to the trans-Golgi network.

PLIN3 Antibody - References

- Diaz E., et al. Cell 93:433-443 (1998).
 Than N.G., et al. Eur. J. Biochem. 258:752-757 (1998).
 Than N.G., et al. Tumor Biol. 20:184-192 (1999).
 Kalnine N., et al. Submitted (MAY-2003) to the EMBL/GenBank/DDBJ databases.
 Ota T., et al. Nat. Genet. 36:40-45 (2004).