

CAPNS1 Antibody
Purified Mouse Monoclonal Antibody (Mab)
Catalog # AM8728b**Specification**

CAPNS1 Antibody - Product Information

Application	WB,E
Primary Accession	P04632
Reactivity	Human
Host	Mouse
Clonality	monoclonal
Isotype	IgG2b, κ

CAPNS1 Antibody - Additional Information**Gene ID** 826**Other Names**

Calpain small subunit 1, CSS1, Calcium-activated neutral proteinase small subunit, CANP small subunit, Calcium-dependent protease small subunit, CDPS, Calcium-dependent protease small subunit 1, Calpain regulatory subunit, CAPNS1, CAPN4, CAPNS

Target/Specificity

This CAPNS1 antibody is generated from a mouse immunized with a KLH conjugated synthetic peptide between 1-323 amino acids from the human region of human CAPNS1.

Dilution

WB~~1:4000

E~~Use at an assay dependent concentration.

Format

Purified monoclonal antibody supplied in PBS with 0.09% (W/V) sodium azide. This antibody is purified through a protein G column, followed by dialysis against PBS.

Storage

Maintain refrigerated at 2-8°C for up to 2 weeks. For long term storage store at -20°C in small aliquots to prevent freeze-thaw cycles.

Precautions

CAPNS1 Antibody is for research use only and not for use in diagnostic or therapeutic procedures.

CAPNS1 Antibody - Protein Information**Name** CAPNS1**Synonyms** CAPN4, CAPNS**Function** Regulatory subunit of the calcium-regulated non-lysosomal thiol-protease which

catalyzes limited proteolysis of substrates involved in cytoskeletal remodeling and signal transduction. Essential for embryonic development (By similarity).

Cellular Location

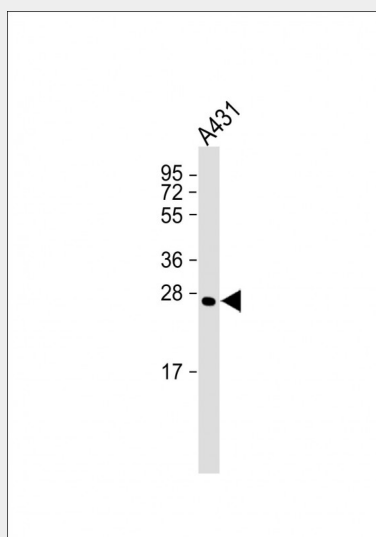
Cytoplasm. Cell membrane. Note=Translocates to the plasma membrane upon calcium binding.

CAPNS1 Antibody - Protocols

Provided below are standard protocols that you may find useful for product applications.

- [Western Blot](#)
- [Blocking Peptides](#)
- [Dot Blot](#)
- [Immunohistochemistry](#)
- [Immunofluorescence](#)
- [Immunoprecipitation](#)
- [Flow Cytometry](#)
- [Cell Culture](#)

CAPNS1 Antibody - Images



Anti-CAPNS1 Antibody at 1:4000 dilution + A431 whole cell lysate Lysates/proteins at 20 μ g per lane. Secondary Goat Anti-Mouse IgG, (H+L), Peroxidase conjugated at 1/10000 dilution. Predicted band size : 28 kDa Blocking/Dilution buffer: 5% NFDM/TBST.

CAPNS1 Antibody - Background

Regulatory subunit of the calcium-regulated non-lysosomal thiol-protease which catalyzes limited proteolysis of substrates involved in cytoskeletal remodeling and signal transduction.

CAPNS1 Antibody - References

- Ohno S., et al. *Nucleic Acids Res.* 14:5559-5559(1986).
Miyake S., et al. *Nucleic Acids Res.* 14:8805-8817(1986).
Ota T., et al. *Nat. Genet.* 36:40-45(2004).
Kalnine N., et al. Submitted (AUG-2003) to the EMBL/GenBank/DDBJ databases.
Grimwood J., et al. *Nature* 428:529-535(2004).

