

Dopamine β -Hydroxylase, C-Terminus Antibody
Affinity purified sheep polyclonal antibody
Catalog # AN1033**Specification**

Dopamine β -Hydroxylase, C-Terminus Antibody - Product Information

Application	WB
Primary Accession	P09172
Reactivity	Human, Mouse
Host	Sheep
Clonality	polyclonal
Calculated MW	75 KDa

Dopamine β -Hydroxylase, C-Terminus Antibody - Additional Information

Gene ID	1621
Gene Name	DBH
Other Names	
Dopamine beta-hydroxylase, Dopamine beta-monooxygenase, Soluble dopamine beta-hydroxylase, DBH	

Target/Specificity

Synthetic peptide corresponding to amino acid residues from the C-terminal region conjugated to KLH.

Dilution

WB~~ 1:1000

Format

Prepared from sheep serum by affinity purification using a Sulfo-Link® column matrix to which the peptide immunogen was coupled.

Antibody Specificity

Specific for the ~75k DBH protein in Western blots.

Storage

Maintain refrigerated at 2-8°C for up to 6 months. For long term storage store at -20°C in small aliquots to prevent freeze-thaw cycles.

Precautions

Dopamine β -Hydroxylase, C-Terminus Antibody is for research use only and not for use in diagnostic or therapeutic procedures.

Shipping

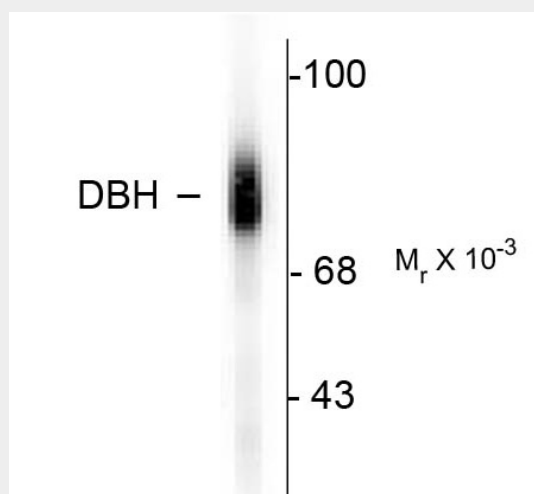
Blue Ice

Dopamine β -Hydroxylase, C-Terminus Antibody - Protocols

Provided below are standard protocols that you may find useful for product applications.

- [Western Blot](#)
- [Blocking Peptides](#)
- [Dot Blot](#)
- [Immunohistochemistry](#)
- [Immunofluorescence](#)
- [Immunoprecipitation](#)
- [Flow Cytometry](#)
- [Cell Culture](#)

Dopamine β -Hydroxylase, C-Terminus Antibody - Images



Western blot of human adrenal medulla lysate showing specific immunolabeling of the ~75k DBH protein.

Dopamine β -Hydroxylase, C-Terminus Antibody - Background

DBH catalyzes the conversion of dopamine to norepinephrine and serves as a marker of noradrenergic cells. DBH antibodies and antibodies for other markers of catecholamine biosynthesis are widely used as markers for dopaminergic and noradrenergic neurons in a variety of applications including depression, schizophrenia, Parkinson's disease and drug abuse (Kish et al., 2001; Zhu et al., 2000; Zhu et al., 1999). The expression of DBH is also elevated during stress (Sabban and Kvetnansky, 2001).

Dopamine β -Hydroxylase, C-Terminus Antibody - References

Kish SJ, Kalasinsky KS, Derkach P, Schmunk GA, Guttman M, Ang L, Adams V, Furukawa Y, Haycock JW (2001) Striatal dopaminergic and serotonergic markers in human heroin users. *Neuropsychopharmacology* 24:561-567.

Sabban EL, Kvetnansky R (2001) Stress-triggered activation of gene expression in catecholaminergic systems: dynamics of transcriptional events. *Trends Neurosci* 24:91-98.

Zhu MY, Klimek V, Haycock JW, Ordway GA (2000) Quantitation of tyrosine hydroxylase protein in the locus coeruleus from postmortem human brain. *J Neurosci Meth* 99:37-44.

Zhu MY, Klimek V, Dilley GE, Haycock JW, Stockmeier C, Overholser JC, Meltzer HY, Ordway GA (1999) Elevated levels of tyrosine hydroxylase in the locus coeruleus in major depression. *Biol Psychiatry* 46:1275-1286.