

**Amyloid Precursor Protein Antibody**  
**Affinity purified rabbit polyclonal antibody**  
**Catalog # AN1081****Specification**

---

**Amyloid Precursor Protein Antibody - Product Information**

Application	WB
Primary Accession	<a href="#">P08592</a>
Reactivity	Rat
Predicted	Chicken, Human, Mouse, Monkey
Host	Rabbit
Clonality	polyclonal
Calculated MW	115 KDa

**Amyloid Precursor Protein Antibody - Additional Information**

Gene ID	54226
Gene Name	APP

**Other Names**

Amyloid beta A4 protein, ABPP, APP, Alzheimer disease amyloid A4 protein homolog, Amyloidogenic glycoprotein, AG, N-APP, Soluble APP-alpha, S-APP-alpha, Soluble APP-beta, S-APP-beta, C99, Beta-amyloid protein 42, Beta-APP42, Beta-amyloid protein 40, Beta-APP40, C83, P3(42), P3(40), C80, Gamma-secretase C-terminal fragment 59, Gamma-CTF(59), Gamma-secretase C-terminal fragment 57, Gamma-CTF(57), Gamma-secretase C-terminal fragment 50, Gamma-CTF(50), C31, App

**Target/Specificity**

Synthetic peptide corresponding to amino acid residues from the C-terminal region conjugated to KLH.

**Dilution**

WB~~ 1:1000

**Format**

Prepared from rabbit serum by affinity purification on a column made with the C-terminal peptide used as antigen

**Antibody Specificity**

Specific for ~115k APP protein. Immunolabeling of the APP protein band is completely blocked by preadsorption of the antibody with the peptide used as antigen.

**Storage**

Maintain refrigerated at 2-8°C for up to 6 months. For long term storage store at -20°C in small aliquots to prevent freeze-thaw cycles.

**Precautions**

Amyloid Precursor Protein Antibody is for research use only and not for use in diagnostic or therapeutic procedures.

**Shipping**

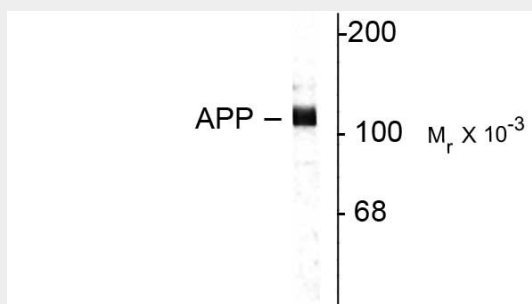
Blue Ice

## Amyloid Precursor Protein Antibody - Protocols

Provided below are standard protocols that you may find useful for product applications.

- [Western Blot](#)
- [Blocking Peptides](#)
- [Dot Blot](#)
- [Immunohistochemistry](#)
- [Immunofluorescence](#)
- [Immunoprecipitation](#)
- [Flow Cytometry](#)
- [Cell Culture](#)

## Amyloid Precursor Protein Antibody - Images



Western blot of rat hippocampal lysate showing specific immunolabeling of the ~115k APP protein.

## Amyloid Precursor Protein Antibody - Background

A large body of evidence has implicated the amyloid precursor protein (APP) in the pathogenesis of Alzheimer's disease (AD) (Kamenetz et al., 2003). The phosphorylation of APP at Thr668 is thought to play a critical role in generation of the soluble APP (beta) and beta-amyloid peptide (abeta) which are the major components of senile plaques in patient brains inflicted with AD (Liu et al., 2003; Ando et al., 2001).

## Amyloid Precursor Protein Antibody - References

Ando K, Iijima KI, Elliott JI, Kirino Y, Suzuki T (2001) Phosphorylation-dependent regulation of the interaction of amyloid precursor protein with Fe65 affects the production of beta-amyloid. *J Biol Chem* 276:40353-40361.

Kamenetz F, Tomita T, Hsieh H, Seabrook G, Borchelt D, Iwatsubo T, Sisodia S, Malinow R (2003) APP processing and synaptic function. *Neuron* 37:925-937.

Liu F, Su Y, Li B, Zhou Y, Ryder J, Gonzalez-DeWhitt P, May PC, Ni B (2003) Regulation of amyloid precursor protein (APP) phosphorylation and processing by p35/cdk5 and p25/cdk5. *FEBS Lett* 547:193-196.