

**Synaptophysin 2 Antibody**  
**Affinity purified rabbit polyclonal antibody**  
**Catalog # AN1108****Specification**

---

**Synaptophysin 2 Antibody - Product Information**

Application	<b>WB</b>
Primary Accession	<a href="#">P22831</a>
Reactivity	<b>Rat</b>
Predicted	<b>Mouse</b>
Host	<b>Rabbit</b>
Clonality	<b>polyclonal</b>
Calculated MW	<b>38 KDa</b>

**Synaptophysin 2 Antibody - Additional Information**

Gene ID	<b>66030</b>
Gene Name	<b>SYNPR</b>
<b>Other Names</b>	
Synaptoporin, Synpr	

**Target/Specificity**

Synthetic peptide corresponding to amino acid residues from the C-terminal region conjugated to KLH.

**Dilution**

WB~~ 1:1000

**Format**

Prepared from rabbit serum by affinity purification via chromatography on an affinity column made with the C-terminal peptide used as antigen.

**Antibody Specificity**

Specific for ~38k Synaptophysin 2 protein.

**Storage**

Maintain refrigerated at 2-8°C for up to 6 months. For long term storage store at -20°C in small aliquots to prevent freeze-thaw cycles.

**Precautions**

Synaptophysin 2 Antibody is for research use only and not for use in diagnostic or therapeutic procedures.

**Shipping**

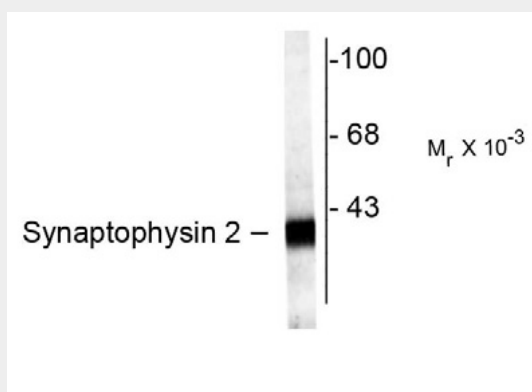
Blue Ice

**Synaptophysin 2 Antibody - Protocols**

Provided below are standard protocols that you may find useful for product applications.

- [Western Blot](#)
- [Blocking Peptides](#)
- [Dot Blot](#)
- [Immunohistochemistry](#)
- [Immunofluorescence](#)
- [Immunoprecipitation](#)
- [Flow Cytometry](#)
- [Cell Culture](#)

## Synaptophysin 2 Antibody - Images



Western blot of rat hippocampal lysate showing specific labeling of the ~38k Synaptophysin 2 protein.

## Synaptophysin 2 Antibody - Background

Synaptophysin 2, also known as Synaptoporin, is a component of the synaptic vesicle membrane and thought to play an important role in synaptic vesicle trafficking (Dai et al., 2003). It is highly homologous to Synaptophysin 1, yet differs in expression. Whereas Synaptophysin 1 is ubiquitously expressed, Synaptophysin 2 is concentrated in the mossy fiber synapses of the hippocampus (Grabs et al., 1994; Singec et al., 2002).

## Synaptophysin 2 Antibody - References

Dai J, Ji C, Gu S, Wu Q, Wang L, Xu J, Zeng L, Ye X, Yin G, Xie Y, Mao Y (2003) Cloning and sequence analysis of the human cDNA encoding the synaptoporin, a highly conserved synaptic vesicle protein. *Molecular Biology Reports* 30:185-191.

Singec I, Knoth R, Ditter M, Hagemeyer CE, Rosenbrock H, Frotscher M, Volk B (2002) Synaptic vesicle protein synaptoporin is differently expressed by subpopulations of mouse hippocampal neurons. *J Comp Neurol* 452(2):139-153.

Grabs D, Bergmann M, Schuster T, Fox PA, Brich M, Gratz M (1994) Differential expression of synaptophysin and synaptoporin during pre- and postnatal development of the rat hippocampal network. *Eur J Neurosci*. 6(11): 1765-71..