

Phospho-Ser129 Alpha Synuclein Antibody
Affinity purified rabbit polyclonal antibody
Catalog # AN1115**Specification**

Phospho-Ser129 Alpha Synuclein Antibody - Product Information

Application	WB
Primary Accession	P37377
Reactivity	Rat
Predicted	Bovine, Human, Mouse, Monkey
Host	Rabbit
Clonality	polyclonal
Calculated MW	15 KDa

Phospho-Ser129 Alpha Synuclein Antibody - Additional Information

Gene ID	29219
Gene Name	SNCA
Other Names	
Alpha-synuclein, Snca	

Target/Specificity

Synthetic phospho-peptide corresponding to amino acid residues surrounding Ser129 conjugated to KLH.

Dilution

WB~~ 1:1000

Format

Prepared from rabbit serum by affinity purification via sequential chromatography on phospho- and dephosphopeptide affinity columns.

Antibody Specificity

Specific for the ~15 kDa alpha-synuclein protein phosphorylated at Ser129. Immunolabeling is blocked by the phosphopeptide used as antigen but not by the corresponding dephosphopeptide.

Storage

Maintain refrigerated at 2-8°C for up to 6 months. For long term storage store at -20°C in small aliquots to prevent freeze-thaw cycles.

Precautions

Phospho-Ser129 Alpha Synuclein Antibody is for research use only and not for use in diagnostic or therapeutic procedures.

Shipping

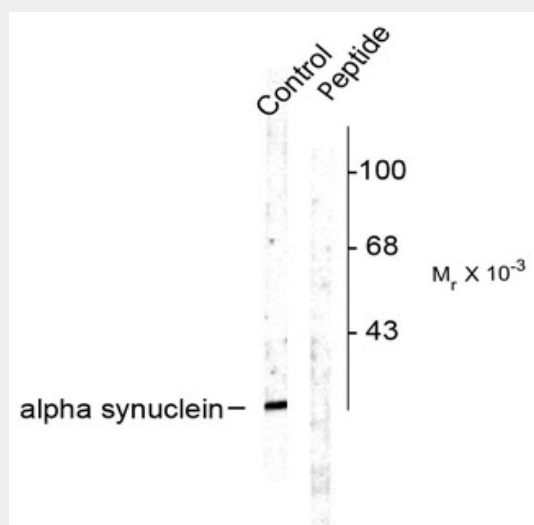
Blue Ice

Phospho-Ser129 Alpha Synuclein Antibody - Protocols

Provided below are standard protocols that you may find useful for product applications.

- [Western Blot](#)
- [Blocking Peptides](#)
- [Dot Blot](#)
- [Immunohistochemistry](#)
- [Immunofluorescence](#)
- [Immunoprecipitation](#)
- [Flow Cytometry](#)
- [Cell Culture](#)

Phospho-Ser129 Alpha Synuclein Antibody - Images



Western blot of rat cortex lysate showing specific labeling of the ~15 k alpha synuclein protein phosphorylated at Ser129. Immunolabeling is blocked by the phosphopeptide (peptide) used as antigen but not by the corresponding dephosphopeptide (not shown).

Phospho-Ser129 Alpha Synuclein Antibody - Background

Alpha-synuclein is a presynaptic neuronal protein that is thought to be involved in the formation of SNARE complexes. Most significantly, aggregated alpha-synuclein is one of the major components found in the Lewy bodies that occur in Parkinson's disease (PD) and other neurodegenerative disorders (Okochi et al., 2000). Mutation of the alpha-synuclein gene is associated with familial forms of PD (Newmann et al., 2002). Recent evidence suggests that phosphorylation of alpha-synuclein at ser129 plays a role in the formation of inclusions in PD (Smith et al., 2005; Masliah et al., 2005).

Phospho-Ser129 Alpha Synuclein Antibody - References

Okochi M, Walter J, Koyama A, Nakajo S, Baba M, Iwatsubo T, Meijer L, Kahle PJ, Haass C (2000) Constitutive phosphorylation of the Parkinson's disease associated alpha-synuclein. *J Biol Chem* Jan 7;275(1): 390-7.

Neumann M, Kahle PJ, Giasson BI, Ozmen L, Borroni E, Sporeen W, Muller V, Odoy S, Fujiwara H, Hasegawa M, Iwatsubo T, Trojanowski JQ, Kretschmar HA, Haass C (2002) Misfolded proteinase k resistant hyperphosphorylated alpha-synuclein in aged transgenic mice with locomotor deterioration and in human alpha synucleinopathies. *J Clin Invest* Nov; 110(10):1403-5.

Smith WW, Margolis RL, Li X, Troncoso JC, Lee MK, Dawson VL, Dawson TM, Iwatsubo T, Ross CA (2005) Alpha-synuclein phosphorylation enhances eosinophilic cytoplasmic inclusion formation in SH-SY5Y Cells. *J Neurosci* June 8; 25(23):5544-5552.

Masliah E, Rockenstein E, Adame A, Alford M, Crews L, Hashimoto M, Suebert P, Lee M, Goldstein J, Chilcote T, Games D, Schenk D (2005) Effects of alpha-synuclein immunization in a mouse model of Parkinson's disease. *Neuron* Jun 16;46(6):857-868.