

**Phospho-Ser923 GABAB R1 Antibody**  
Affinity purified rabbit polyclonal antibody  
Catalog # AN1126

**Specification**

---

**Phospho-Ser923 GABAB R1 Antibody - Product Information**

Application	WB
Primary Accession	<a href="#">O9Z0U4</a>
Reactivity	Rat
Predicted	Bovine, Human, Mouse, Monkey
Host	Rabbit
Clonality	polyclonal
Calculated MW	102 KDa

**Phospho-Ser923 GABAB R1 Antibody - Additional Information**

Gene ID	81657
Gene Name	GABBR1
<b>Other Names</b>	
	Gamma-aminobutyric acid type B receptor subunit 1, GABA-B receptor 1, GABA-B-R1, GABA-BR1, GABABR1, Gb1, Gabbr1

**Target/Specificity**

Synthetic phospho-peptide corresponding to amino acid residues surrounding Ser923 conjugated to KLH.

**Dilution**

WB~~ 1:1000

**Format**

Prepared from rabbit serum by affinity purification via sequential chromatography on phospho- and dephospho-peptide affinity columns.

**Antibody Specificity**

Specific for ~102k GABAB R1 phosphorylated at Ser923. Immunolabeling of the GABAB R1 band is completely blocked by  $\lambda$ -phosphatase treatment.

**Storage**

Maintain refrigerated at 2-8°C for up to 6 months. For long term storage store at -20°C in small aliquots to prevent freeze-thaw cycles.

**Precautions**

Phospho-Ser923 GABAB R1 Antibody is for research use only and not for use in diagnostic or therapeutic procedures.

**Shipping**

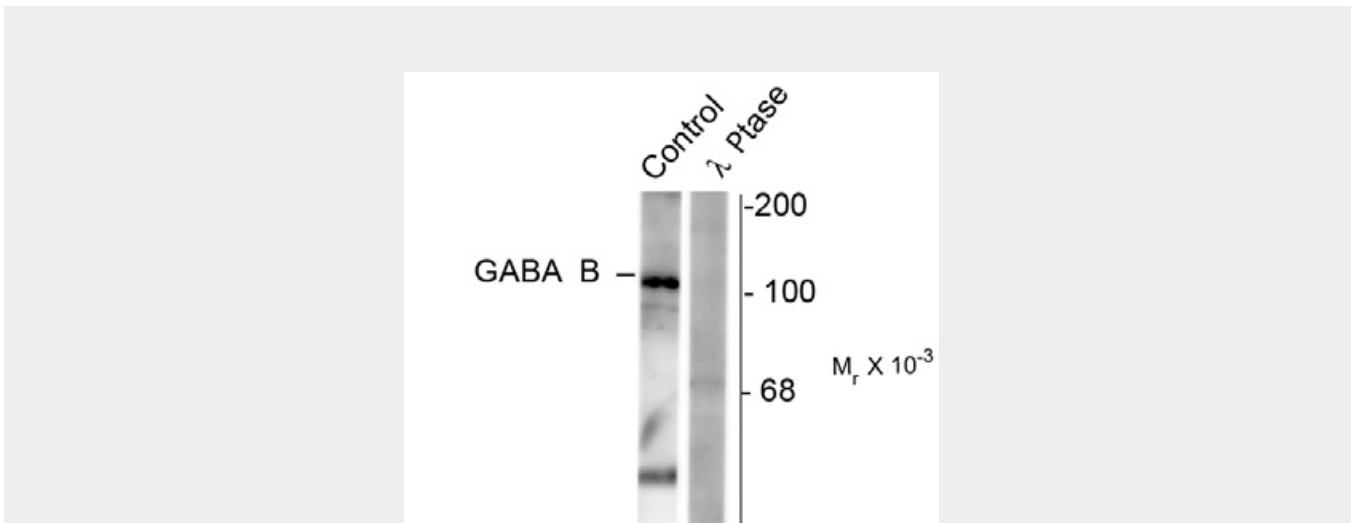
Blue Ice

## Phospho-Ser923 GABAB R1 Antibody - Protocols

Provided below are standard protocols that you may find useful for product applications.

- [Western Blot](#)
- [Blocking Peptides](#)
- [Dot Blot](#)
- [Immunohistochemistry](#)
- [Immunofluorescence](#)
- [Immunoprecipitation](#)
- [Flow Cytometry](#)
- [Cell Culture](#)

## Phospho-Ser923 GABAB R1 Antibody - Images



Western blot of rat synaptic membrane showing specific immunolabeling of the ~102k GABAB R1 protein phosphorylated at Ser923 (control). The phosphospecificity of this labeling is shown in the second lane (lambda-phosphatase:  $\lambda$ -Ptase). The blot is identical to the control except that it was incubated in  $\lambda$ -Ptase (1200 units for 30 min) before being exposed to the phospho-Ser923 GABAB antibody. The immunolabeling is completely eliminated by treatment with  $\lambda$ -Ptase.

## Phospho-Ser923 GABAB R1 Antibody - Background

Gamma-aminobutyric acid (GABA) is the primary inhibitory neurotransmitter in the central nervous system. There are two major classes of GABA receptors: the GABAA and the GABAB subtype of receptors. GABAB receptors are heterodimeric G protein-coupled receptors that mediate slow synaptic inhibition in the central nervous system. Phosphorylation enhances GABAB receptor effector coupling (Couve et al., 2004). Phosphorylation of Ser923 is thought to be important in the regulation of GABAB receptor function.

## Phospho-Ser923 GABAB R1 Antibody - References

Couve A, Calver AR, Fairfax B, Moss SJ, Pangalos MN (2004) Unravelling the unusual signaling properties of the GABA(B) receptor. *Biochem. Pharmacol.* Oct 12;68(8):1527-36.

### Phospho-Ser923 GABAB R1 Antibody - Citations

- [The Regulatory Effects of Lateral Hypothalamus Area GABA Receptor on Gastric Ischemia-Reperfusion Injury in Rats.](#)