

**Phospho-Ser311, Thr315 MEK5 Antibody**  
**Affinity purified rabbit polyclonal antibody**  
**Catalog # AN1131****Specification**

---

**Phospho-Ser311, Thr315 MEK5 Antibody - Product Information**

Application	WB
Primary Accession	<a href="#">Q62862</a>
Reactivity	Rat
Predicted	Bovine, Chicken, Human, Mouse, Monkey, Xenopus, Zebrafish
Host	Rabbit
Clonality	polyclonal
Calculated MW	49 KDa

**Phospho-Ser311, Thr315 MEK5 Antibody - Additional Information**

Gene ID	29568
Gene Name	MAP2K5
Other Names	
Dual specificity mitogen-activated protein kinase kinase 5, MAP kinase kinase 5, MAPKK 5, MAPK/ERK kinase 5, MEK 5, Map2k5, Mek5, Mkk5, Prkmk5	

**Target/Specificity**

Synthetic phospho-peptide corresponding to amino acid residues surrounding Ser311/Thr315 conjugated to KLH.

**Dilution**

WB~~ 1:1000

**Format**

Prepared from rabbit serum by affinity purification via sequential chromatography on phospho- and dephosphopeptide affinity columns.

**Antibody Specificity**

Specific for the ~49k MEK5 protein phosphorylated at Ser311, Thr315. Immunolabeling of the MEK5 band is blocked by preadsorption with the phospho-peptide used as antigen but not by the corresponding dephospho-peptide.

**Storage**

Maintain refrigerated at 2-8°C for up to 6 months. For long term storage store at -20°C in small aliquots to prevent freeze-thaw cycles.

**Precautions**

Phospho-Ser311, Thr315 MEK5 Antibody is for research use only and not for use in diagnostic or therapeutic procedures.

**Shipping**

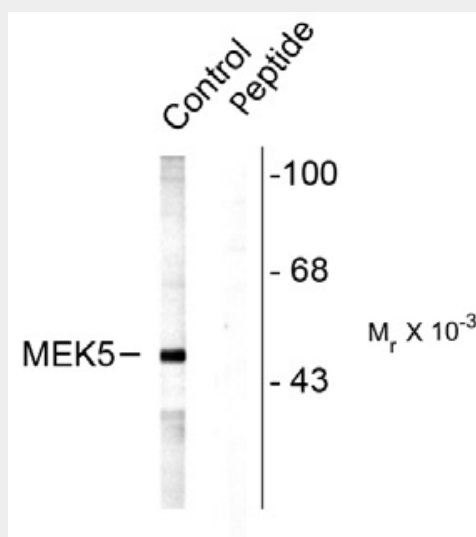
Blue Ice

## Phospho-Ser311, Thr315 MEK5 Antibody - Protocols

Provided below are standard protocols that you may find useful for product applications.

- [Western Blot](#)
- [Blocking Peptides](#)
- [Dot Blot](#)
- [Immunohistochemistry](#)
- [Immunofluorescence](#)
- [Immunoprecipitation](#)
- [Flow Cytometry](#)
- [Cell Culture](#)

## Phospho-Ser311, Thr315 MEK5 Antibody - Images



Western blot of rat testes lysate showing specific labeling of the ~49k MEK5 protein (Control). Immunolabeling is blocked by preadsorption with the phospho-peptide used as antigen (Peptide) but not by the corresponding dephospho-peptide (not shown).

## Phospho-Ser311, Thr315 MEK5 Antibody - Background

MEK5 (also known as MKK5) is a dual specificity serine/threonine protein kinase belonging to the MAP kinase kinase family. MEK5 has been shown to specifically activate ERK5 (Zhou et al., 1995) whereas MEK5 itself is regulated by MEKK3 (Chao et al., 1999). An important link between MEK5 and metastatic prostate cancer has been demonstrated (Mehta et al., 2003). Dual phosphorylation of Ser311 and Thr315 have been implicated in cell proliferation (Cameron et al., 2004).

## Phospho-Ser311, Thr315 MEK5 Antibody - References

Zhou G, Bao ZQ, Dixon JE, (1995) Components of a new human protein kinase signal transduction pathway. J. Biol. Chem. 270(21):12665-9.  
Chao TH, Hayashi M, Tapping RI, Kato Y, Lee JD (1999) MEKK3 directly regulates MEK5 activity as part of the big mitogen-activated protein kinase 1 (BMK1) signaling pathway. J. Biol. Chem. 274(51):36035-8.  
Mehta PB, Jenkins BL, McCarthy L, Thilak L, Robson CN, Neal DE, Leung HY (2003) MEK5 overexpression is associated with metastatic prostate cancer, and stimulates proliferation, MMP-9 expression and invasion. Oncogene 22(9):1381-9.

Cameron SJ, Abe J, Malik S, Che W, Yang J (2004) Differential role of MEK5alpha and MEK5beta in BMK1/ERK5 activation. J. Biol. Chem. 279(2):1506-12.