

**Actin Antibody**  
**Mouse monoclonal antibody**  
**Catalog # AN1169****Specification**

---

**Actin Antibody - Product Information**

|                   |                        |
|-------------------|------------------------|
| Application       | WB                     |
| Primary Accession | <a href="#">P68139</a> |
| Reactivity        | All Species            |
| Host              | Mouse                  |
| Clonality         | monoclonal             |
| Isotype           | IgG1                   |
| Calculated MW     | 42 KDa                 |

**Actin Antibody - Additional Information**

|           |        |
|-----------|--------|
| Gene ID   | 421534 |
| Gene Name | ACTA1  |

**Other Names**

Actin, alpha skeletal muscle, Alpha-actin-1, ACTA1, ACTA

**Target/Specificity**

Preparation of chicken gizzard actin.

**Dilution**

WB~~ 1:5000

**Format**

Unpurified ascites fluid.

**Antibody Specificity**

Specific for the ~42 kDa actin protein in lysates from skeletal, cardiac, gizzard and aorta tissues. Reacts with all actin isoforms.

**Storage**

Maintain refrigerated at 2-8°C for up to 6 months. For long term storage store at -20°C in small aliquots to prevent freeze-thaw cycles.

**Precautions**

Actin Antibody is for research use only and not for use in diagnostic or therapeutic procedures.

**Shipping**

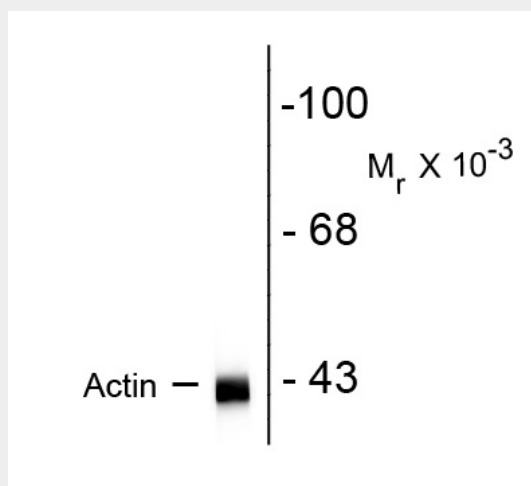
Blue Ice

**Actin Antibody - Protocols**

Provided below are standard protocols that you may find useful for product applications.

- [Western Blot](#)
- [Blocking Peptides](#)
- [Dot Blot](#)
- [Immunohistochemistry](#)
- [Immunofluorescence](#)
- [Immunoprecipitation](#)
- [Flow Cytometry](#)
- [Cell Culture](#)

### Actin Antibody - Images



Western blot of rat hippocampal homogenate showing specific immunolabeling of the ~ 42k actin protein.

### Actin Antibody - Background

Actin is the most abundant protein found in virtually all eukaryotic cells. It is also one of the most highly-conserved proteins, differing by no more than 20% in species as diverse as algae and humans, making it an excellent choice for use as a loading control. It is the monomeric subunit of microfilaments, one of the three major components of the cytoskeleton, and of thin filaments, which are part of the contractile apparatus in muscle cells. Thus, actin participates in many important cellular functions, including muscle contraction, cell motility, cell division and cytokinesis, vesicle and organelle movement, cell signaling, and the establishment and maintenance of cell junctions and cell shape.

### Actin Antibody - References

Lessard, J.L. Two monoclonal antibodies to actin: one muscle selective and one generally reactive. *Cell Motility and Cytoskeleton* (1998) 10:349-362.