

**Calretinin Antibody**  
**Sheep polyclonal antibody**  
**Catalog # AN1173****Specification**

---

**Calretinin Antibody - Product Information**

Application	WB, IF
Primary Accession	<a href="#">P47728</a>
Reactivity	Rat
Predicted	Human, Mouse, Monkey
Host	Sheep
Clonality	polyclonal
Calculated MW	29 KDa

**Calretinin Antibody - Additional Information**

Gene ID	117059
Gene Name	CALB2
<b>Other Names</b>	
Calretinin, CR, Calb2	

**Target/Specificity**

Purified guinea pig calretinin.

**Dilution**

WB~~ 1:1000

IF~~ 1:500

**Format**

Protein A purified sheep serum.

**Antibody Specificity**

Specific for the ~29 kDa calretinin protein in Western blots of rat brain lysate. The antibody also works well for Immunohistochemistry on formalin or paraformaldehyde perfused rat brain tissue sections.

**Storage**

Maintain refrigerated at 2-8°C for up to 6 months. For long term storage store at -20°C in small aliquots to prevent freeze-thaw cycles.

**Precautions**

Calretinin Antibody is for research use only and not for use in diagnostic or therapeutic procedures.

**Shipping**

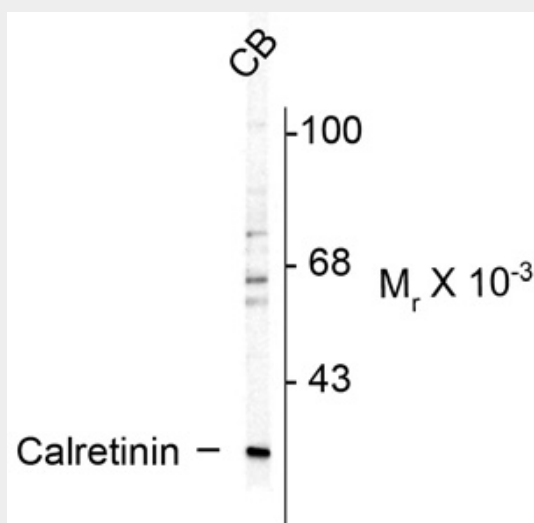
Blue Ice

**Calretinin Antibody - Protocols**

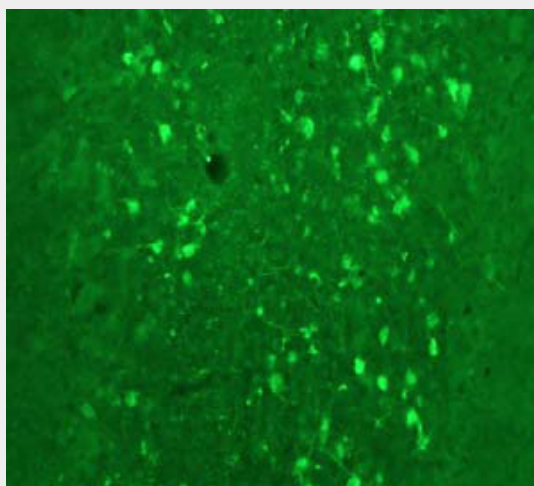
Provided below are standard protocols that you may find useful for product applications.

- [Western Blot](#)
- [Blocking Peptides](#)
- [Dot Blot](#)
- [Immunohistochemistry](#)
- [Immunofluorescence](#)
- [Immunoprecipitation](#)
- [Flow Cytometry](#)
- [Cell Culture](#)

#### Calretinin Antibody - Images



Western blot of rat cerebellum (CB) lysate showing specific immunolabeling of the ~29k calretinin protein.



Immunostaining of rat cerebellum showing fluorescence of calretinin containing cells.

#### Calretinin Antibody - Background

Calretinin is a calcium-binding protein involved in calcium signaling. It is abundantly expressed throughout the central nervous system, retina and many other tissues. Studies have shown that calretinin may play a role in neuroprotection by buffering intracellular calcium (Lukas and Jones 1994, Weisenhorn et al., 1996). Additionally, calretinin selectively stains mesothelial cells thus

making it an important marker for differentiating malignant mesothelioma from carcinomas (Attanoos et al., 2000).

### **Calretinin Antibody - References**

- Attanoos RL, Dojcinov SD, Webb R, Gibbs AR. (2000) Anti-mesothelial markers in sarcomatoid mesothelioma and other spindle cell neoplasms. *Histopathology*.37(3):224-31.
- Isaacs KR, Winsky L, Strauss KI, Jacobowitz DM. (1995) Quadruple colocalization of calretinin, calcitonin gene-related peptide, vasoactive intestinal peptide, and substance P in fibers within the villi of the rat intestine. *Cell Tissue Res.*, 280(3):639-51.
- Lukas W, Jones KA (1994) Cortical neurons containing calretinin are selectively resistant to calcium overload and excitotoxicity in vitro. *Neurosci.* 61(2):307-16.
- Weisenhorn DMV, Weruaga-Prieto E, Celio MR (1996) Calretinin immunoreactivity in organotypic cultures of the rat cerebral cortex: effects of serum deprivation. *Exp. Brain Res.* 108(1):101-112.