

Calcitonin Gene Related Peptide (CGRP) Antibody
Mouse monoclonal antibody
Catalog # AN1175**Specification**

Calcitonin Gene Related Peptide (CGRP) Antibody - Product Information

Application	ICC
Primary Accession	P01256
Reactivity	Human, Rat
Host	Mouse
Clonality	monoclonal
Isotype	IgG2a

Calcitonin Gene Related Peptide (CGRP) Antibody - Additional Information

Gene ID	24241
Gene Name	CALCA
Other Names	
Calcitonin gene-related peptide 1, Alpha-type CGRP, Calcitonin gene-related peptide I, CGRP-I, Calca, Calc	

Target/Specificity
Purified rat alpha-CGRP.

Dilution
ICC~~1:50-1:100

Format
Protein G purified

Antibody Specificity
Specific for Calcitonin Gene Related Peptide. Also recognizes rat beta-CGRP and human alpha-CGRP (10-fold less sensitivity compared to rat alpha-CGRP). Suggested positive controls are dorsal root ganglia, pancreas and gut.

Storage
Maintain refrigerated at 2-8°C for up to 6 months. For long term storage store at -20°C in small aliquots to prevent freeze-thaw cycles.

Precautions
Calcitonin Gene Related Peptide (CGRP) Antibody is for research use only and not for use in diagnostic or therapeutic procedures.

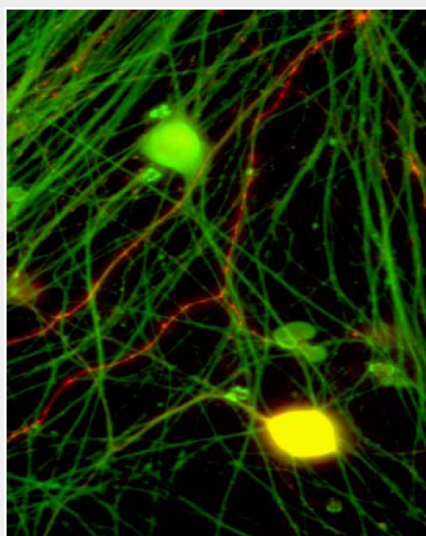
Shipping
Blue Ice

Calcitonin Gene Related Peptide (CGRP) Antibody - Protocols

Provided below are standard protocols that you may find useful for product applications.

- [Western Blot](#)
- [Blocking Peptides](#)
- [Dot Blot](#)
- [Immunohistochemistry](#)
- [Immunofluorescence](#)
- [Immunoprecipitation](#)
- [Flow Cytometry](#)
- [Cell Culture](#)

Calcitonin Gene Related Peptide (CGRP) Antibody - Images



Immunostaining of CGRP (red) in cryopreserved DRG neurons grown on coverslips. 40xmag. Green staining is PGP9.5. Yellow staining is the colocalization of CGRP and PGP9.5. Cells were obtained and photo was provided courtesy of QBMCellScience.

Calcitonin Gene Related Peptide (CGRP) Antibody - Background

Calcitonin Gene Related Peptide [CGRP] is a 37 amino acid peptide and is the most potent endogenous vasodilator currently known (Brain et al., 1985). CGRP is primarily produced in nervous tissue, however, its receptors are expressed throughout the body. CGRP is also strongly implicated in the vasodilatory effect of endogenous cannabinoid anandamide in the brain. This effect was found to be antagonized by capsazepine. CGRP is also currently a major target of research in regards to factors effecting the onset of migraine headaches (Edvinsson L., 2003). CGRP antibodies have been used successfully in immunoneutralization (Wong et al., 1993)

Calcitonin Gene Related Peptide (CGRP) Antibody - References

Brain SD, Williams TJ, Tippins JR, Morris HR, MacIntyre I (1985) Calcitonin gene related peptide is a potent vasodilator. *Nature* 313 (5997): 54-6
Edvinsson L (2003) New therapeutic target in primary headaches—blocking the CGRP receptor. *Expert Opin Ther Targets*.7(3):377-83
Wong HC, Tache' Y, Lloud KCK, Yang H, Sternini C, Holzer P, Walsh JH (1993) Monoclonal antibody to rat alpha-CGRP: production, characterization, and in vivo immunoneutralization activity. *Hybridoma*. 12:93-106.