

Mnk2a Antibody
Rabbit Polyclonal Antibody
Catalog # AN1281**Specification**

Mnk2a Antibody - Product Information

Application	WB
Primary Accession	Q9HBH9
Reactivity	Human
Host	Rabbit
Clonality	Polyclonal
Calculated MW	51875

Mnk2a Antibody - Additional Information

Gene ID	2872
Gene Name	MKNK2

Target/Specificity

Synthetic peptide from the C-terminal region, specific to the human Mnk2a isoform

Dilution

WB~~ 1:500

Format

Antigen Affinity Purified from Pooled Serum

Storage

Maintain refrigerated at 2-8°C for up to 6 months. For long term storage store at -20°C in small aliquots to prevent freeze-thaw cycles.

Precautions

Mnk2a Antibody is for research use only and not for use in diagnostic or therapeutic procedures.

Shipping

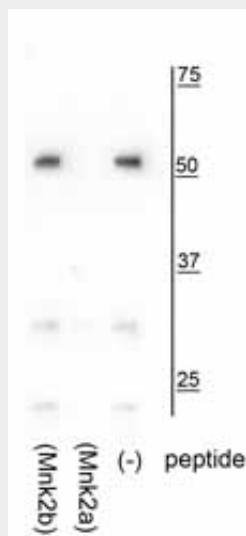
Blue Ice

Mnk2a Antibody - Protocols

Provided below are standard protocols that you may find useful for product applications.

- [Western Blot](#)
- [Blocking Peptides](#)
- [Dot Blot](#)
- [Immunohistochemistry](#)
- [Immunofluorescence](#)
- [Immunoprecipitation](#)
- [Flow Cytometry](#)
- [Cell Culture](#)

Mnk2a Antibody - Images



Western blot of HeLa lysate showing specific immunolabeling of the ~52 kDa Mnk2a isoform in the third lane (-). Specificity is shown in the second lane (Mnk2a) where immunolabeling is blocked by preadsorption of the Mnk2a peptide used as the antigen, but not by the Mnk2b peptide in the first lane.

Mnk2a Antibody - Background

MAP kinase-interacting kinases Mnk1 and Mnk2 are activated by the MAP kinases, ERK and p38 (Waskiewicz et al., 1997). Additionally, Mnk1 and Mnk2 have been shown to phosphorylate the translation initiation factor eIF4E (Fukunaga and Hunter 1997; Waskiewicz et al., 1997). Alternative splicing of the MKNK2 gene results in two isoforms with different C-termini: one that has a MAPK-binding domain, Mnk2a, and one that does not, Mnk2b (Parra et al., 2005). Recent studies have indicated that Mnk2a has tumor suppressive activity while Mnk2b is pro-oncogenic (Maimon et al., 2014).