

Anti-Adenylate Cyclase III Antibody

Our Anti-Adenylate Cyclase III primary antibody from PhosphoSolutions is rabbit polyclonal. It detects
Catalog # AN1298

Specification

Anti-Adenylate Cyclase III Antibody - Product Information

Application	WB, IHC
Primary Accession	P21932
Reactivity	Bovine
Host	Rabbit
Clonality	Polyclonal
Isotype	IgG
Calculated MW	128936

Anti-Adenylate Cyclase III Antibody - Additional Information

Gene ID **64508**

Other Names

AC-III antibody, AC3 antibody, ADCY3 antibody, ADCY3_HUMAN antibody, adenylate cyclase 3 antibody, Adenylate cyclase antibody, Adenylate cyclase type 3 antibody, Adenylate cyclase type III antibody, Adenylate cyclase 3 antibody, ATP pyrophosphate lyase antibody, ATP pyrophosphate-lyase 3 antibody, olfactory type antibody

Target/Specificity

Adenylate cyclase is the enzyme which produces the "second messenger" signaling molecule, cAMP from ATP. Type III adenylate cyclase is localized to the membranes surrounding neuronal cilia. Much is currently unknown about the function of primary cilia in vertebrates, however, recent work has begun to explore their role in neuronal signaling and neurogenesis (Fuchs and Schwark, 2004; Louvi and Grove 2011).

Dilution

WB~~1:1000
IHC~~1:100~500

Format

Antigen Affinity Purified

Storage

Maintain refrigerated at 2-8°C for up to 6 months. For long term storage store at -20°C in small aliquots to prevent freeze-thaw cycles.

Precautions

Anti-Adenylate Cyclase III Antibody is for research use only and not for use in diagnostic or therapeutic procedures.

Shipping

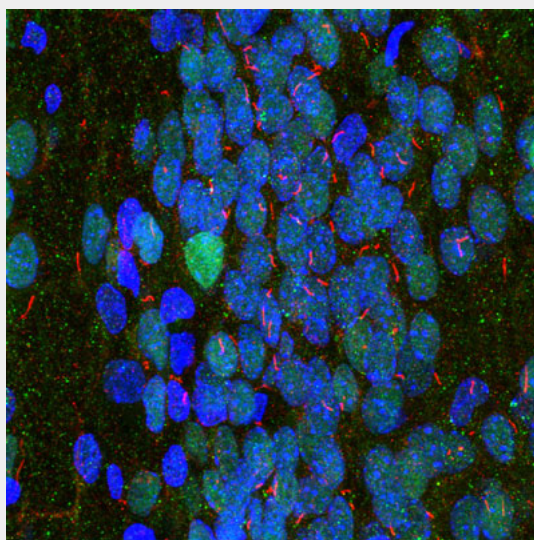
Blue Ice

Anti-Adenylate Cyclase III Antibody - Protocols

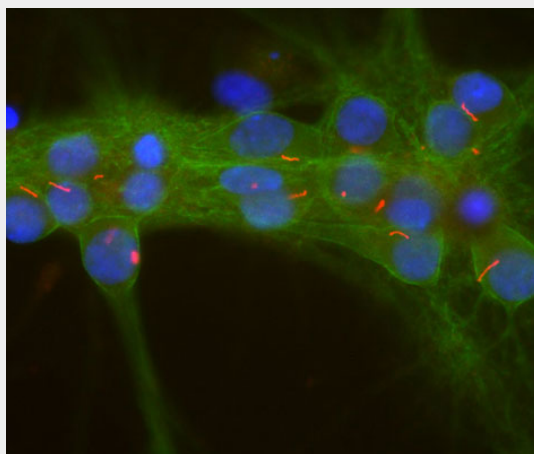
Provided below are standard protocols that you may find useful for product applications.

- [Western Blot](#)
- [Blocking Peptides](#)
- [Dot Blot](#)
- [Immunohistochemistry](#)
- [Immunofluorescence](#)
- [Immunoprecipitation](#)
- [Flow Cytometry](#)
- [Cell Culture](#)

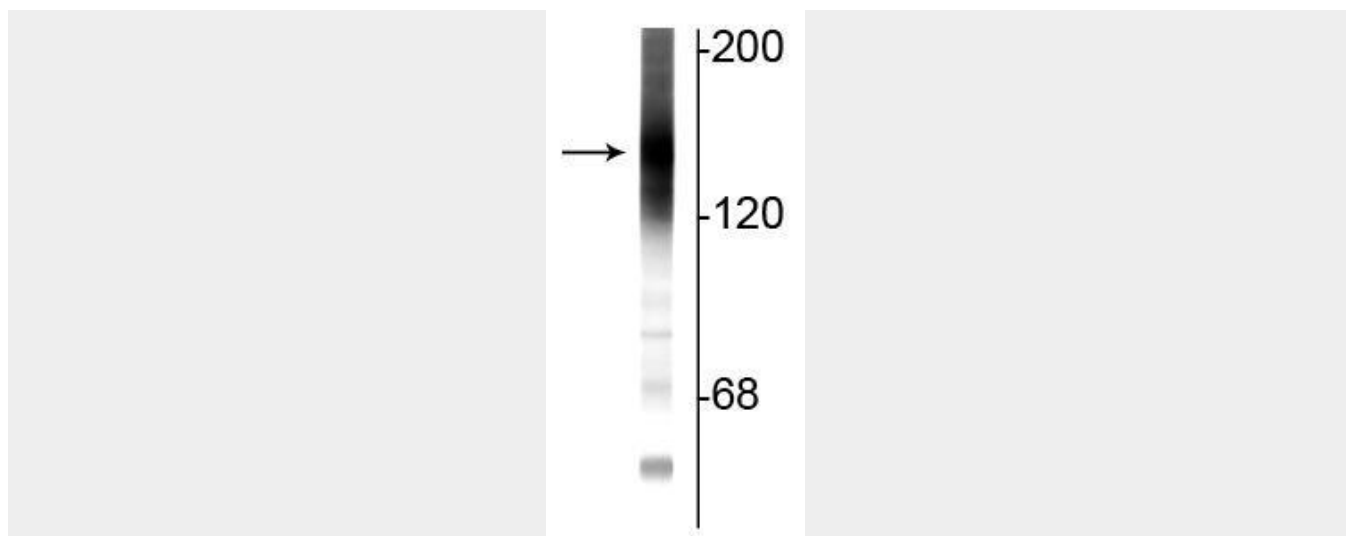
Anti-Adenylate Cyclase III Antibody - Images



Immunofluorescence of a section of rat hippocampus selectively labeling the neuronal cilia with anti-adenylate cyclase III (cat. 85-AC3, 1:10,000, red), labeling nuclei with anti-MECP2 (cat. 1205-MeCP2, 1:1000, green), and Hoechst staining of nuclear DNA.



Immunostaining of cultured rat neurons and glia showing strong staining of neuronal cilia using our anti-adenylate cyclase III antibody (cat. 85-AC3, 1:500, red) and axonal and dendritic staining of alpha II spectrin (cat. 98-A2SM, 1:500, green) revealing the submembranous cytoskeleton and DNA (blue).



Western blot of rat cortical lysate showing specific immunolabeling of the ~160 kDa adenylate cyclase III protein.

Anti-Adenylate Cyclase III Antibody - Background

Adenylate cyclase is the enzyme which produces the "second messenger" signaling molecule, cAMP from ATP. Type III adenylate cyclase is localized to the membranes surrounding neuronal cilia. Much is currently unknown about the function of primary cilia in vertebrates, however, recent work has begun to explore their role in neuronal signaling and neurogenesis (Fuchs and Schwark, 2004; Louvi and Grove 2011).