

Anti-Alpha II Spectrin Antibody

Our Anti-Alpha II Spectrin primary antibody from PhosphoSolutions is rabbit polyclonal.

It detects h

Catalog # AN1301

Specification**Anti-Alpha II Spectrin Antibody - Product Information**

Application	WB, IHC
Primary Accession	Q13813
Reactivity	Bovine
Host	Rabbit
Clonality	Polyclonal
Isotype	IgG
Calculated MW	284539

Anti-Alpha II Spectrin Antibody - Additional Information

Gene ID **6709**

Other Names

(ALPHA)II-SPECTRIN antibody, Alpha-II spectrin antibody, brain antibody, EIEE5 antibody, FLJ17738 antibody, FLJ44613 antibody, Fodrin antibody, Fodrin alpha chain antibody, Fodrin, alpha antibody, NEAS antibody, Non erythrocytic spectrin alpha antibody, non-erythroid alpha chain antibody, SPECA antibody, Spectrin alpha chain antibody, Spectrin alpha chain brain antibody, Spectrin alpha non erythrocytic 1 antibody, Spectrin antibody, Spectrin non erythroid alpha chain antibody, Spectrin, alpha, non-erythrocytic 1 (alpha-fodrin) antibody, Spectrin, nonerythroid, alpha subunit antibody, Spna2 antibody, SPTA 2 antibody, SPTA2 antibody, SPTA2_HUMAN antibody, SPTAN 1 antibody, SPTAN1 antibody

Target/Specificity

The spectrin family of cytoskeletal proteins is comprised of 2 alpha genes ($\alpha 1$ and $\alpha 2$) and five beta genes ($\beta 1$ - $\beta 5$). Spectrins have been shown to function as scaffolding proteins in mechanical support of the plasma membrane as well as bind other membrane proteins and lipids (Bennett and Baines 2001). Defects in spectrin genes have been linked to some forms of hereditary spherocytosis, a type of auto-hemolytic anemia which is characterized by spherical red blood cells that are more prone to lysis (Eber and Lux 2004).

Dilution

WB~~1:1000

IHC~~1:100~500

Format

Serum

Storage

Maintain refrigerated at 2-8°C for up to 6 months. For long term storage store at -20°C in small aliquots to prevent freeze-thaw cycles.

Precautions

Anti-Alpha II Spectrin Antibody is for research use only and not for use in diagnostic or therapeutic procedures.

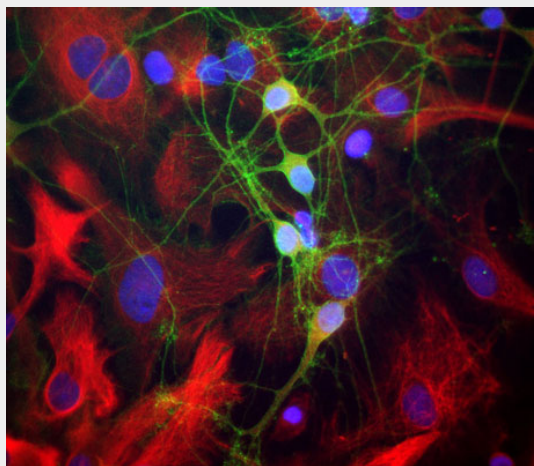
Shipping
Blue Ice

Anti-Alpha II Spectrin Antibody - Protocols

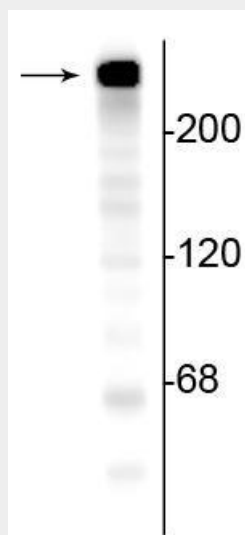
Provided below are standard protocols that you may find useful for product applications.

- [Western Blot](#)
- [Blocking Peptides](#)
- [Dot Blot](#)
- [Immunohistochemistry](#)
- [Immunofluorescence](#)
- [Immunoprecipitation](#)
- [Flow Cytometry](#)
- [Cell Culture](#)

Anti-Alpha II Spectrin Antibody - Images



Immunofluorescence of cultured neurons and glia cells showing specific labeling of neuronal perikarya, axons and dendrites with anti-alpha-II-spectrin (cat. 99-A2SR, 1:1000, green), specific labeling of intermediate filaments in glial and fibroblastic cells with anti-vimentin (cat. 2105-VIM, 1:5000, red) and nuclear staining with DAPI (blue).



Western blot of mouse brain lysate showing specific immunolabeling of the ~240 kDa alpha II spectrin protein.

Anti-Alpha II Spectrin Antibody - Background

The spectrin family of cytoskeletal proteins is comprised of 2 alpha genes ($\alpha 1$ and $\alpha 2$) and five beta genes ($\beta 1$ - $\beta 5$). Spectrins have been shown to function as scaffolding proteins in mechanical support of the plasma membrane as well as bind other membrane proteins and lipids (Bennett and Baines 2001). Defects in spectrin genes have been linked to some forms of hereditary spherocytosis, a type of auto-hemolytic anemia which is characterized by spherical red blood cells that are more prone to lysis (Eber and Lux 2004).