

Anti-Alpha Synuclein (Ser129) Antibody

Our Anti-Alpha Synuclein (Ser129) rabbit polyclonal phosphospecific primary antibody from PhosphoSol
Catalog # AN1309

Specification

Anti-Alpha Synuclein (Ser129) Antibody - Product Information

Application	WB
Primary Accession	P37377
Reactivity	Bovine
Host	Rabbit
Clonality	Polyclonal
Isotype	IgG
Calculated MW	14515

Anti-Alpha Synuclein (Ser129) Antibody - Additional Information

Gene ID **29219**

Other Names

Alpha synuclein antibody, Alpha-synuclein antibody, Alpha-synuclein, isoform NACP140 antibody, alphaSYN antibody, MGC105443 antibody, MGC110988 antibody, MGC127560 antibody, MGC64356 antibody, NACP antibody, Non A beta component of AD amyloid antibody, Non A4 component of amyloid antibody, Non A4 component of amyloid precursor antibody, Non-A beta component of AD amyloid antibody, Non-A-beta component of alzheimers disease amyloid , precursor of antibody, Non-A4 component of amyloid precursor antibody, Non-A4 component of amyloid, precursor of antibody, OTTHUMP00000218549 antibody, OTTHUMP00000218551 antibody, OTTHUMP00000218552 antibody, OTTHUMP00000218553 antibody, OTTHUMP00000218554 antibody, PARK 1 antibody, PARK 4 antibody, PARK1 antibody, PARK4 antibody, Parkinson disease (autosomal dominant Lewy body) 4 antibody, Parkinson disease familial 1 antibody, SNCA antibody, Snca synuclein alpha (non A4 component of amyloid precursor) antibody, SYN antibody, Synuclein alpha antibody, Synuclein alpha 140 antibody, Synuclein alpha (non A4 component of amyloid precursor) antibody, SYUA_HUMAN antibody

Target/Specificity

Alpha-synuclein is a presynaptic neuronal protein that is thought to be involved in the formation of SNARE complexes. Most significantly, aggregated alphasynuclein is one of the major components found in the Lewy bodies that occur in Parkinson's disease (PD) and other neurodegenerative disorders (Okochi et al., 2000). Mutation of the alpha-synuclein gene is associated with familial forms of PD (Newmann et al., 2002). Recent evidence suggests that phosphorylation of alpha-synuclein at Ser129 plays a role in the formation of inclusions in PD (Smith et al., 2005; Masliah et al., 2005).

Dilution

WB~~1:1000

Format

Antigen Affinity Purified from Pooled Serum

Storage

Maintain refrigerated at 2-8°C for up to 6 months. For long term storage store at -20°C in small

aliquots to prevent freeze-thaw cycles.

Precautions

Anti-Alpha Synuclein (Ser129) Antibody is for research use only and not for use in diagnostic or therapeutic procedures.

Shipping

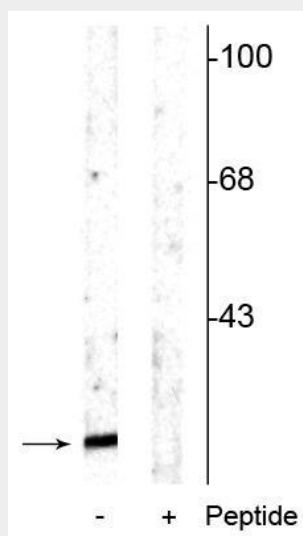
Blue Ice

Anti-Alpha Synuclein (Ser129) Antibody - Protocols

Provided below are standard protocols that you may find useful for product applications.

- [Western Blot](#)
- [Blocking Peptides](#)
- [Dot Blot](#)
- [Immunohistochemistry](#)
- [Immunofluorescence](#)
- [Immunoprecipitation](#)
- [Flow Cytometry](#)
- [Cell Culture](#)

Anti-Alpha Synuclein (Ser129) Antibody - Images



Western blot of rat cortical lysate showing specific immunolabeling of the ~15 kDa alpha synuclein protein phosphorylated at Ser129 in the first lane (-). Phosphospecificity is shown in the second lane (+) where the immunolabeling is blocked by the phosphopeptide used as antigen but not by the corresponding non-phosphopeptide (not shown).

Anti-Alpha Synuclein (Ser129) Antibody - Background

Alpha-synuclein is a presynaptic neuronal protein that is thought to be involved in the formation of SNARE complexes. Most significantly, aggregated alphasynuclein is one of the major components found in the Lewy bodies that occur in Parkinson's disease (PD) and other neurodegenerative disorders (Okochi et al., 2000). Mutation of the alpha-synuclein gene is associated with familial forms of PD (Newmann et al., 2002). Recent evidence suggests that phosphorylation of alpha-synuclein at Ser129 plays a role in the formation of inclusions in PD (Smith et al., 2005;

Masliah et al., 2005).