

Anti-Amyloid Precursor Protein Antibody

Our Anti-Amyloid Precursor Protein rabbit polyclonal primary antibody from
PhosphoSolutions is produced in house.
Catalog # AN1310

Specification**Anti-Amyloid Precursor Protein Antibody - Product Information**

Primary Accession	P08592
Host	Rabbit
Clonality	Polyclonal
Isotype	IgG
Calculated MW	86704

Anti-Amyloid Precursor Protein Antibody - Additional Information

Gene ID **54226**

Other Names

A4 amyloid protein antibody, A4_HUMAN antibody, AAA antibody, ABETA antibody, ABPP antibody, AD1 antibody, AICD-50 antibody, AICD-57 antibody, AICD-59 antibody, AID(50) antibody, AID(57) antibody, AID(59) antibody, Alzheimer disease amyloid protein antibody, Amyloid beta (A4) precursor protein antibody, Amyloid beta A4 protein antibody, Amyloid beta protein antibody, Amyloid intracellular domain 50 antibody, Amyloid intracellular domain 57 antibody, Amyloid intracellular domain 59 antibody, Amyloid precursor protein antibody, APP antibody, APPI antibody, Beta amyloid peptide antibody, Beta-amyloid precursor protein antibody, Beta-APP40 antibody, Beta-APP42 antibody, C31 antibody, Cerebral vascular amyloid peptide antibody, CTFgamma antibody, CVAP antibody, Gamma-CTF(50) antibody, Gamma-CTF(57) antibody, Gamma-CTF(59) antibody, peptidase nexin II antibody, PN 2 antibody, PN II antibody, PN-II antibody, PN2 antibody, PreA4 antibody, Protease nexin II antibody, Protease nexin-II antibody, S-APP-alpha antibody, S-APP-beta antibody

Target/Specificity

A large body of evidence has implicated the amyloid precursor protein (APP) in the pathogenesis of Alzheimer's disease (AD) (Kamenetz et al., 2003). The phosphorylation of APP at Thr668 is thought to play a critical role in generation of the soluble APP (beta) and beta-amyloid peptide (abeta) which are the major components of senile plaques in patient brains inflicted with AD (Liu et al., 2003; Ando et al., 2001).

Format

Antigen Affinity Purified from Pooled Serum

Storage

Maintain refrigerated at 2-8°C for up to 6 months. For long term storage store at -20°C in small aliquots to prevent freeze-thaw cycles.

Precautions

Anti-Amyloid Precursor Protein Antibody is for research use only and not for use in diagnostic or therapeutic procedures.

Shipping

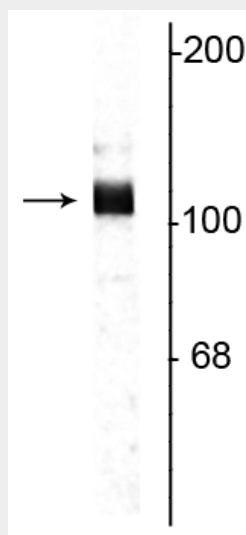
Blue Ice

Anti-Amyloid Precursor Protein Antibody - Protocols

Provided below are standard protocols that you may find useful for product applications.

- [Western Blot](#)
- [Blocking Peptides](#)
- [Dot Blot](#)
- [Immunohistochemistry](#)
- [Immunofluorescence](#)
- [Immunoprecipitation](#)
- [Flow Cytometry](#)
- [Cell Culture](#)

Anti-Amyloid Precursor Protein Antibody - Images



Western blot of rat hippocampal lysate showing specific immunolabeling of the ~115 kDa APP protein.

Anti-Amyloid Precursor Protein Antibody - Background

A large body of evidence has implicated the amyloid precursor protein (APP) in the pathogenesis of Alzheimer's disease (AD) (Kamenetz et al., 2003). The phosphorylation of APP at Thr668 is thought to play a critical role in generation of the soluble APP (beta) and beta-amyloid peptide (abeta) which are the major components of senile plaques in patient brains inflicted with AD (Liu et al., 2003; Ando et al., 2001).