

Anti-Arginase I (ARG1) Antibody

Our Anti-Arginase I (ARG1) primary antibody from PhosphoSolutions is chicken polyclonal. It detects Catalog # AN1316

Specification

Anti-Arginase I (ARG1) Antibody - Product Information

Application	WB
Primary Accession	P07824
Reactivity	Bovine, Chicken
Host	Chicken
Clonality	Polyclonal
Isotype	IgY
Calculated MW	34973

Anti-Arginase I (ARG1) Antibody - Additional Information

Gene ID **29221**

Other Names

A I antibody, AI antibody, ARG 1 antibody, arg1 antibody, ARG11_HUMAN antibody, Arginase 1 antibody, Arginase liver antibody, Arginase type I antibody, Arginase liver antibody, Arginase-1 antibody, Arginase1 antibody, Liver type arginase antibody, Liver-type arginase antibody, Type I arginase antibody

Target/Specificity

Arginase I, a cytosolic enzyme, is highly expressed in the liver and is a component of the urea cycle (Jenkinson et al, 1996). There are two isoforms of arginase, both catalyze the conversion of arginine to ornithine and urea, but differ based on subcellular localization, tissue distribution, and enzymatic properties (Jenkinson et al, 1996). Arginase I has been identified in macrophages in response to various pathogen exposures causing an upregulation of inducible nitric oxide synthase, iNOS, yielding increased levels of nitric oxide (Morris et al, 1998) and inflammation (Poljakovic et al, 2007).

Format

Total IgY fraction

Storage

Maintain refrigerated at 2-8°C for up to 6 months. For long term storage store at -20°C in small aliquots to prevent freeze-thaw cycles.

Precautions

Anti-Arginase I (ARG1) Antibody is for research use only and not for use in diagnostic or therapeutic procedures.

Shipping

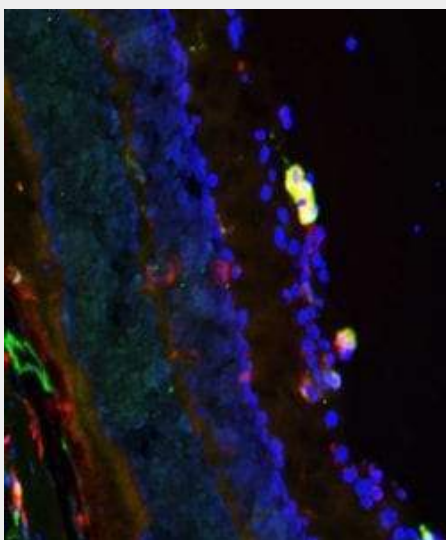
Blue Ice

Anti-Arginase I (ARG1) Antibody - Protocols

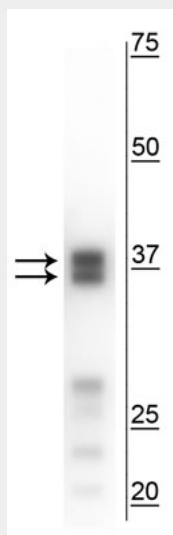
Provided below are standard protocols that you may find useful for product applications.

- [Western Blot](#)
- [Blocking Peptides](#)
- [Dot Blot](#)
- [Immunohistochemistry](#)
- [Immunofluorescence](#)
- [Immunoprecipitation](#)
- [Flow Cytometry](#)
- [Cell Culture](#)

Anti-Arginase I (ARG1) Antibody - Images



Immunofluorescent image of mouse retina specifically labeling arginase (cat. 146-ARG, 1:500, green) and CD206 (red). The blue nuclear stain is DAPI. The image was kindly provided by Sarah Gough, University of Miami Miller School of Medicine.



Western blot of mouse liver lysate showing specific immunolabeling of the ~35, 38 kDa arginase I protein.

Anti-Arginase I (ARG1) Antibody - Background

Arginase I, a cytosolic enzyme, is highly expressed in the liver and is a component of the urea cycle (Jenkinson et al, 1996). There are two isoforms of arginase, both catalyze the conversion of arginine to ornithine and urea, but differ based on subcellular localization, tissue distribution, and enzymatic properties (Jenkinson et al, 1996). Arginase I has been identified in macrophages in response to various pathogen exposures causing an upregulation of inducible nitric oxide synthase, iNOS, yielding increased levels of nitric oxide (Morris et al, 1998) and inflammation (Poljakovic et al, 2007).