

**Anti-ATF2 (Thr52) Antibody**

**Our Anti-ATF2 (Thr52) rabbit polyclonal phosphospecific primary antibody from PhosphoSolutions is pr**  
**Catalog # AN1318**

**Specification**

---

**Anti-ATF2 (Thr52) Antibody - Product Information**

Primary Accession	<a href="#">P15336</a>
Host	<b>Rabbit</b>
Clonality	<b>Polyclonal</b>
Isotype	<b>IgG</b>
Calculated MW	<b>54537</b>

**Anti-ATF2 (Thr52) Antibody - Additional Information**

Gene ID **1386**

**Other Names**

Activating transcription factor 2 antibody, Activating transcription factor 2 splice variant ATF2 var2 antibody, ATF 2 antibody, Atf-2 antibody, Atf2 antibody, ATF2 protein antibody, ATF2\_HUMAN antibody, cAMP Response Element Binding Protein 2 antibody, cAMP response element binding protein CRE BP1 antibody, cAMP response element-binding protein CRE-BP1 antibody, cAMP responsive element binding protein 2, formerly antibody, cAMP-dependent transcription factor ATF-2 antibody, cAMP-responsive element-binding protein 2 antibody, CRE BP1 antibody, CRE-BP antibody, CREB 2 antibody, CREB-2 antibody, CREB2 antibody, CREBP1 antibody, Cyclic AMP dependent transcription factor ATF 2 antibody, Cyclic AMP-dependent transcription factor ATF-2 antibody, Cyclic AMP-responsive element-binding protein 2 antibody, D130078H02Rik antibody, D18875 antibody, HB 16 antibody, HB16 antibody, Histone acetyltransferase ATF2 antibody, MGC105211 antibody, MGC105222 antibody, MGC111558 antibody, MGC142504 antibody, mXBP antibody, MXBP protein antibody, Tg(Gzma-Klra1)7Wum antibody, TREB 7 antibody, TREB7 antibody

**Target/Specificity**

The transcription factor ATF2 is a member of the ATF/CREB family of leucine zipper proteins. In response to stress stimuli, it activates a variety of gene targets that are involved in oncogenesis, and has been correlated with maintenance of a cancer cell phenotype (Vlahopoulos et al., 2008). Inhibiting ATF2 impedes melanoma development and elicits tumor suppressor function (Bhoumik et al., 2008). To act as a tumor suppressor, ATF2 must localize at the mitochondria, and phosphorylation at Thr-52 by PKC $\epsilon$  regulates this translocation (Lau et al., 2012).

**Format**

Antigen Affinity Purified from Pooled Serum

**Storage**

Maintain refrigerated at 2-8°C for up to 6 months. For long term storage store at -20°C in small aliquots to prevent freeze-thaw cycles.

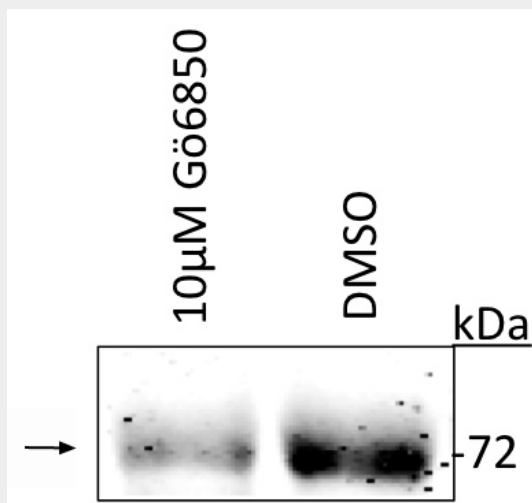
**Precautions**

Anti-ATF2 (Thr52) Antibody is for research use only and not for use in diagnostic or therapeutic procedures.

**Shipping**  
Blue Ice**Anti-ATF2 (Thr52) Antibody - Protocols**

Provided below are standard protocols that you may find useful for product applications.

- [Western Blot](#)
- [Blocking Peptides](#)
- [Dot Blot](#)
- [Immunohistochemistry](#)
- [Immunofluorescence](#)
- [Immunoprecipitation](#)
- [Flow Cytometry](#)
- [Cell Culture](#)

**Anti-ATF2 (Thr52) Antibody - Images**

Western blot of UACC903 melanoma cell line lysate (DMSO) showing specific immunolabeling of the ~ 72 kDa ATF2 protein phosphorylated at Thr52. Immunolabeling is reduced by treatment of the lysate with the PKC catalytic inhibitor Gö6850. Image courtesy of Eric Lau and Ze'ev Ronai.

**Anti-ATF2 (Thr52) Antibody - Background**

The transcription factor ATF2 is a member of the ATF/CREB family of leucine zipper proteins. In response to stress stimuli, it activates a variety of gene targets that are involved in oncogenesis, and has been correlated with maintenance of a cancer cell phenotype (Vlahopoulos et al., 2008). Inhibiting ATF2 impedes melanoma development and elicits tumor suppressor function (Bhoumik et al., 2008). To act as a tumor suppressor, ATF2 must localize at the mitochondria, and phosphorylation at Thr-52 by PKC $\epsilon$  regulates this translocation (Lau et al., 2012).