

**Anti-ATRIP (Ser239) Antibody**

**Our Anti-ATRIP (Ser239) rabbit polyclonal phosphospecific primary antibody from PhosphoSolutions is**  
**Catalog # AN1319**

**Specification**

---

**Anti-ATRIP (Ser239) Antibody - Product Information**

|                   |                        |
|-------------------|------------------------|
| Primary Accession | <a href="#">Q8WXE1</a> |
| Host              | <b>Rabbit</b>          |
| Clonality         | <b>Polyclonal</b>      |
| Isotype           | <b>IgG</b>             |
| Calculated MW     | <b>85838</b>           |

**Anti-ATRIP (Ser239) Antibody - Additional Information**

Gene ID **84126**

**Other Names**

AGS1 antibody, ATIP antibody, ATM and Rad3 related interacting protein antibody, ATM and Rad3-related-interacting protein antibody, ATR interacting protein antibody, ATR-interacting protein antibody, Atrip antibody, ATRIP\_HUMAN antibody, DKFZp762J2115 antibody, FLJ12343 antibody, MGC20625 antibody, MGC21482 antibody, MGC26740 antibody

**Target/Specificity**

ATRIP, ATR interacting protein, binds to ATR to regulate ATR expression, and is an essential component of the DNA damage checkpoint pathway (Cortez et al, 2001). ATR is recruited to DNA lesions in part through its association with ATRIP, which in turn interacts with the single-stranded DNA binding protein RPA (Ball et al, 2007). DNA replication forks may stall as a result of DNA damage causing phosphorylation of several proteins, including BRCA1 when colocalizing with ATR/ATRIP complex and RPA (Venere et al, 2007). The DNA replication fork stall coincides with BRCA1 directly phosphorylating ATRIP at Ser-239 (Venere et al, 2007).

**Format**

Antigen Affinity Purified from Pooled Serum

**Storage**

Maintain refrigerated at 2-8°C for up to 6 months. For long term storage store at -20°C in small aliquots to prevent freeze-thaw cycles.

**Precautions**

Anti-ATRIP (Ser239) Antibody is for research use only and not for use in diagnostic or therapeutic procedures.

**Shipping**

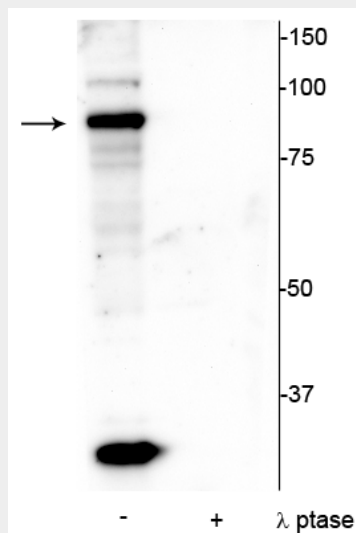
Blue Ice

**Anti-ATRIP (Ser239) Antibody - Protocols**

Provided below are standard protocols that you may find useful for product applications.

- [Western Blot](#)
- [Blocking Peptides](#)
- [Dot Blot](#)
- [Immunohistochemistry](#)
- [Immunofluorescence](#)
- [Immunoprecipitation](#)
- [Flow Cytometry](#)
- [Cell Culture](#)

#### Anti-ATRIP (Ser239) Antibody - Images



Western blot of mouse testicular lysate showing specific immunolabeling of the ~86 kDa ATRIP protein phosphorylated at Ser239 in the first lane (-). Phosphospecificity is shown in the second lane (+) where the immunolabeling is completely eliminated by lysate treatment with lambda phosphatase ( $\lambda$ -Ptase, 800 units/1mg protein for 30 minutes).

#### Anti-ATRIP (Ser239) Antibody - Background

ATRIP, ATR interacting protein, binds to ATR to regulate ATR expression, and is an essential component of the DNA damage checkpoint pathway (Cortez et al, 2001). ATR is recruited to DNA lesions in part through its association with ATRIP, which in turn interacts with the single-stranded DNA binding protein RPA (Ball et al, 2007). DNA replication forks may stall as a result of DNA damage causing phosphorylation of several proteins, including BRCA1 when colocalizing with ATR/ATRIP complex and RPA (Venere et al, 2007). The DNA replication fork stall coincides with BRCA1 directly phosphorylating ATRIP at Ser-239 (Venere et al, 2007).