

Anti-Beclin1 (Ser234) Antibody

Our Anti-Beclin1 (Ser234) rabbit polyclonal phosphospecific primary antibody from PhosphoSolutions i
Catalog # AN1320

Specification

Anti-Beclin1 (Ser234) Antibody - Product Information

Primary Accession	Q14457
Reactivity	Bovine
Host	Rabbit
Clonality	Polyclonal
Isotype	IgG
Calculated MW	51896

Anti-Beclin1 (Ser234) Antibody - Additional Information

Gene ID **8678**

Other Names

PG6 antibody, ATG 6 antibody, ATG6 antibody, ATG6 autophagy related 6 homolog antibody, Bcl-2-interacting protein beclin antibody, Beclin 1 (coiled coil moesin like BCL2 interacting protein) antibody, Beclin 1 autophagy related antibody, Beclin-1 antibody, Beclin1 antibody, BECN 1 antibody, Becn1 antibody, BECN1_HUMAN antibody, Coiled coil myosin like BCL2 interacting protein antibody, Coiled-coil myosin-like BCL2-interacting protein antibody, GT197 antibody, Protein GT197 antibody, VPS 30 antibody, VPS30 antibody

Target/Specificity

Beclin-1 plays a key role in tumor suppression and autophagy. It has been suggested that autophagy proteins such as beclin-1 can inhibit tumorigenesis and that decreased expression of these proteins may contribute to the development of human malignancies (Liang et al., 1999). Beclin-1 has been shown to interact with 14-3-3 proteins through Akt-mediated phosphorylation at Ser-234 (Wang et al., 2012).

Format

Antigen Affinity Purified from Pooled Serum

Storage

Maintain refrigerated at 2-8°C for up to 6 months. For long term storage store at -20°C in small aliquots to prevent freeze-thaw cycles.

Precautions

Anti-Beclin1 (Ser234) Antibody is for research use only and not for use in diagnostic or therapeutic procedures.

Shipping

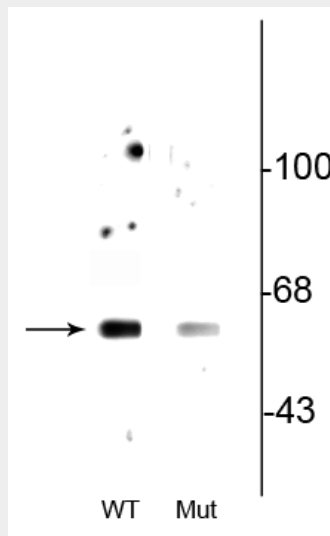
Blue Ice

Anti-Beclin1 (Ser234) Antibody - Protocols

Provided below are standard protocols that you may find useful for product applications.

- [Western Blot](#)
- [Blocking Peptides](#)
- [Dot Blot](#)
- [Immunohistochemistry](#)
- [Immunofluorescence](#)
- [Immunoprecipitation](#)
- [Flow Cytometry](#)
- [Cell Culture](#)

Anti-Beclin1 (Ser234) Antibody - Images



Western blot of wild type (WT) beclin-1 expressed in HeLa cell lysate showing specific immunolabeling of beclin-1 phosphorylated at Ser234. This immunolabeling is decreased in the beclin-1 double alanine substitution mutant (S234A, S295A: Mut) expressed in HeLa cell lysate.

Anti-Beclin1 (Ser234) Antibody - Background

Beclin-1 plays a key role in tumor suppression and autophagy. It has been suggested that autophagy proteins such as beclin-1 can inhibit tumorigenesis and that decreased expression of these proteins may contribute to the development of human malignancies (Liang et al., 1999). Beclin-1 has been shown to interact with 14-3-3 proteins through Akt-mediated phosphorylation at Ser-234 (Wang et al., 2012).