

**Anti-Calretinin Antibody**

**Our Anti-Calretinin primary antibody from PhosphoSolutions is sheep polyclonal. It detects rat Calre  
Catalog # AN1324**

**Specification**

---

**Anti-Calretinin Antibody - Product Information**

Application	WB
Primary Accession	<a href="#">P47728</a>
Reactivity	Bovine
Host	Sheep
Clonality	Polyclonal
Isotype	IgG
Calculated MW	31405

**Anti-Calretinin Antibody - Additional Information**

Gene ID **117059**

**Other Names**

29 kDa calbindin antibody, CAB 29 antibody, CAB29 antibody, CAL 2 antibody, CAL2 antibody, CALB 2 antibody, CALB2 antibody, CALB2\_HUMAN antibody, Calbindin 2 29kDa antibody, Calbindin 2 antibody, Calbindin D29K antibody, Calbindin2 antibody, Calretinin antibody, CR antibody

**Target/Specificity**

Calretinin is a calcium-binding protein involved in calcium signaling. It is abundantly expressed throughout the central nervous system, retina and many other tissues. Studies have shown that calretinin may play a role in neuroprotection by buffering intracellular calcium (Lukas and Jones 1994, Weisenhorn et al., 1996). Additionally, calretinin selectively stains mesothelial cells thus making it an important marker for differentiating malignant mesothelioma from carcinomas (Attanoos et al., 2000).

**Dilution**

WB~~1:1000

**Format**

Protein G Purified

**Storage**

Maintain refrigerated at 2-8°C for up to 6 months. For long term storage store at -20°C in small aliquots to prevent freeze-thaw cycles.

**Precautions**

Anti-Calretinin Antibody is for research use only and not for use in diagnostic or therapeutic procedures.

**Shipping**

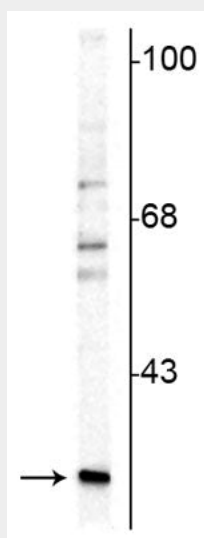
Blue Ice

## Anti-Calretinin Antibody - Protocols

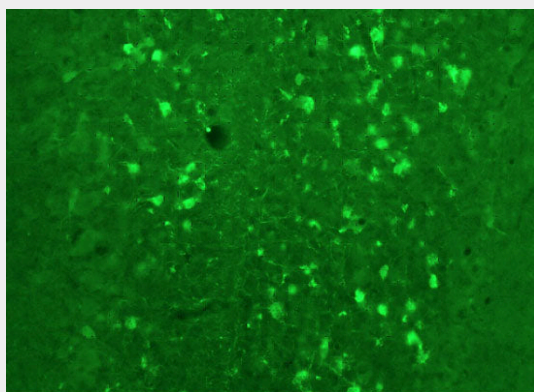
Provided below are standard protocols that you may find useful for product applications.

- [Western Blot](#)
- [Blocking Peptides](#)
- [Dot Blot](#)
- [Immunohistochemistry](#)
- [Immunofluorescence](#)
- [Immunoprecipitation](#)
- [Flow Cytometry](#)
- [Cell Culture](#)

## Anti-Calretinin Antibody - Images



Western blot of rat cerebellar lysate showing specific immunolabeling of the ~29 kDa calretinin protein.



Immunostaining of rat cerebellum showing fluorescence of calretinin (cat. 303-CAL, green, 1:500) containing cells.

## Anti-Calretinin Antibody - Background

Calretinin is a calcium-binding protein involved in calcium signaling. It is abundantly expressed throughout the central nervous system, retina and many other tissues. Studies have shown that calretinin may play a role in neuroprotection by buffering intracellular calcium (Lukas and Jones

1994, Weisenhorn et al., 1996). Additionally, calretinin selectively stains mesothelial cells thus making it an important marker for differentiating malignant mesothelioma from carcinomas (Attanoos et al., 2000).