

Anti-CDK5 Antibody

Our Anti-CDK5 primary antibody from PhosphoSolutions is mouse monoclonal. It detects human, mouse, a
Catalog # AN1331

Specification

Anti-CDK5 Antibody - Product Information

Application	WB
Primary Accession	Q03114
Reactivity	Bovine
Host	Mouse
Clonality	Monoclonal
Isotype	IgG1
Calculated MW	33254

Anti-CDK5 Antibody - Additional Information

Gene ID **140908**

Other Names

Cdk 5 antibody, Cdk5 antibody, CDK5_HUMAN antibody, Cell division protein kinase 5 antibody, Crk6 antibody, Cyclin dependent kinase 5 antibody, Cyclin-dependent kinase 5 antibody, Protein kinase CDK5 splicing antibody, PSSALRE antibody, Serine threonine protein kinase PSSALRE antibody, Serine/threonine-protein kinase PSSALRE antibody, Tau protein kinase II catalytic subunit antibody, TPKII catalytic subunit antibody

Target/Specificity

The neuronal protein kinase, Cdk5 has been implicated in a vast array of normal neuronal functions including regulation of neurotransmitter synthesis (Kansy J et al., 2004), the presynaptic vesicle cycle (Nguyen, C. & Bibb, JA 2003), neurotransmitter receptor trafficking and dopamine neurotransmission (Bibb, JA et al. 1999). At the same time Cdk5 has been implicated in a plethora of neurological and neuropsychiatric disorders including Alzheimer's, Parkinson's, Huntington's, epilepsy, schizophrenia, and drug addiction. Detection of Cdk5 in normal samples as well as tissue undergoing neurodegeneration may advance studies in these areas. Moreover, this antibody may allow more accurate postmortem evaluations of Cdk5 protein expression, and thus serve as a valuable new reagent for neuropathology.

Dilution

WB~~1:1000

Format

Protein G Purified

Storage

Maintain refrigerated at 2-8°C for up to 6 months. For long term storage store at -20°C in small aliquots to prevent freeze-thaw cycles.

Precautions

Anti-CDK5 Antibody is for research use only and not for use in diagnostic or therapeutic procedures.

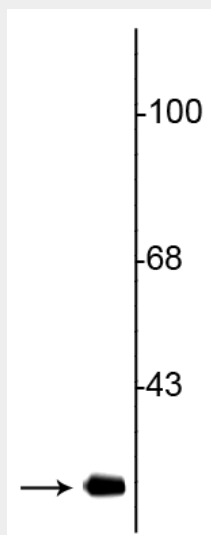
Shipping
Blue Ice

Anti-CDK5 Antibody - Protocols

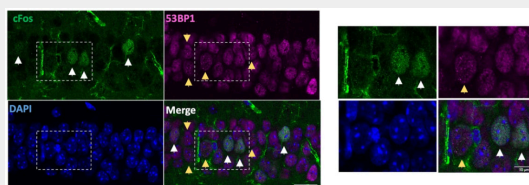
Provided below are standard protocols that you may find useful for product applications.

- [Western Blot](#)
- [Blocking Peptides](#)
- [Dot Blot](#)
- [Immunohistochemistry](#)
- [Immunofluorescence](#)
- [Immunoprecipitation](#)
- [Flow Cytometry](#)
- [Cell Culture](#)

Anti-CDK5 Antibody - Images



Western blot of rat striatal lysate showing specific immunolabeling of the ~28 kDa Cdk5 protein.



Anti-CDK5 Antibody - Background

The neuronal protein kinase, Cdk5 has been implicated in a vast array of normal neuronal functions including regulation of neurotransmitter synthesis (Kansy J et al., 2004), the presynaptic vesicle cycle (Nguyen, C. & Bibb, JA 2003), neurotransmitter receptor trafficking and dopamine neurotransmission (Bibb, JA et al. 1999). At the same time Cdk5 has been implicated in a plethora of neurological and neuropsychiatric disorders including Alzheimer's, Parkinson's, Huntington's, epilepsy, schizophrenia, and drug addiction. Detection of Cdk5 in normal samples as well as tissue undergoing neurodegeneration may advance studies in these areas. Moreover, this antibody may

allow more accurate postmortem evaluations of Cdk5 protein expression, and thus serve as a valuable new reagent for neuropathology.