

Anti-Calcitonin Gene Related Peptide (CGRP) Antibody
Our Anti-Calcitonin Gene Related Peptide (CGRP) primary antibody from
PhosphoSolutions is mouse mono
Catalog # AN1332

Specification

Anti-Calcitonin Gene Related Peptide (CGRP) Antibody - Product Information

| | |
|-------------------|------------------------|
| Primary Accession | P01256 |
| Host | Mouse |
| Clonality | Monoclonal |
| Isotype | IgG2a |
| Calculated MW | 13948 |

Anti-Calcitonin Gene Related Peptide (CGRP) Antibody - Additional Information

Gene ID **24241**

Other Names

Calcitonin/calcitonin related polypeptide alpha antibody, Alpha type CGRP antibody, Beta type CGRP antibody, CALC1 antibody, CALC2 antibody, CALCA antibody, CALCB antibody, Calcitonin 1 antibody, Calcitonin 2 antibody, Calcitonin gene related peptide I antibody, Calcitonin gene related peptide II antibody, Calcitonin related polypeptide alpha antibody, Calcitonin related polypeptide beta antibody, CGRP antibody, CGRP I antibody, CGRP II antibody, CGRP1 antibody, CGRP2 antibody, CT antibody, Katalcalcine antibody, KC antibody

Target/Specificity

Calcitonin Gene Related Peptide [CGRP] is a 37 amino acid peptide and is the most potent endogenous vasodilator currently known (Brain et al., 1985). CGRP is primarily produced in nervous tissue, however, its receptors are expressed throughout the body. CGRP is also strongly implicated in the vasodilatory effect of endogenous cannabinoid anandamide in the brain. This effect was found to be antagonized by capsazepine. CGRP is also currently a major target of research in regards to factors effecting the onset of migraine headaches (Edvinsson L., 2003). CGRP antibodies have been used successfully in immunoneutralization (Wong et al., 1993).

Format

Protein G Purified

Storage

Maintain refrigerated at 2-8°C for up to 6 months. For long term storage store at -20°C in small aliquots to prevent freeze-thaw cycles.

Precautions

Anti-Calcitonin Gene Related Peptide (CGRP) Antibody is for research use only and not for use in diagnostic or therapeutic procedures.

Shipping

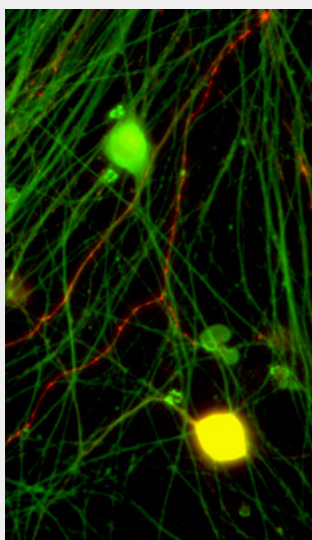
Blue Ice

Anti-Calcitonin Gene Related Peptide (CGRP) Antibody - Protocols

Provided below are standard protocols that you may find useful for product applications.

- [Western Blot](#)
- [Blocking Peptides](#)
- [Dot Blot](#)
- [Immunohistochemistry](#)
- [Immunofluorescence](#)
- [Immunoprecipitation](#)
- [Flow Cytometry](#)
- [Cell Culture](#)

Anti-Calcitonin Gene Related Peptide (CGRP) Antibody - Images



Immunostaining of CGRP (red) in cryopreserved DRG neurons grown on coverslips. 40xmag. Green staining is PGP9.5. Yellow staining is the colocalization of CGRP and PGP9.5. Cells were obtained and photo was provided courtesy of QBMCellScience.

Anti-Calcitonin Gene Related Peptide (CGRP) Antibody - Background

Calcitonin Gene Related Peptide [CGRP] is a 37 amino acid peptide and is the most potent endogenous vasodilator currently known (Brain et al., 1985). CGRP is primarily produced in nervous tissue, however, its receptors are expressed throughout the body. CGRP is also strongly implicated in the vasodilatory effect of endogenous cannabinoid anandamide in the brain. This effect was found to be antagonized by capsazepine. CGRP is also currently a major target of research in regards to factors effecting the onset of migraine headaches (Edvinsson L., 2003). CGRP antibodies have been used successfully in immunoneutralization (Wong et al., 1993).