

**Anti-Che-1 (AATF) (Ser477) Antibody**

**Our Anti-Che-1 (AATF) (Ser477) rabbit polyclonal phosphospecific primary antibody from PhosphoSoluti**  
**Catalog # AN1336**

**Specification**

---

**Anti-Che-1 (AATF) (Ser477) Antibody - Product Information**

Primary Accession	<a href="#">O9NY61</a>
Host	<b>Rabbit</b>
Clonality	<b>Polyclonal</b>
Isotype	<b>IgG</b>
Calculated MW	<b>63133</b>

**Anti-Che-1 (AATF) (Ser477) Antibody - Additional Information**

Gene ID **26574**

**Other Names**

AATF antibody, AATF\_HUMAN antibody, Apoptosis antagonizing transcription factor antibody, Apoptosis-antagonizing transcription factor antibody, BFR2 antibody, CHE 1 antibody, CHE1 antibody, DED antibody, Protein AATF antibody, Rb binding protein Che 1 antibody, Rb-binding protein Che-1 antibody

**Target/Specificity**

Che-1, also known as AATF (apoptosis-antagonizing transcription factor), is a RNA polymerase II-binding protein involved in regulating the transcription factor E2F and promoting cell cycle progression (Burgdorf et al., 2004). It has been suggested that Che-1 may act as a neuroprotective factor against Abeta-induced apoptosis by suppressing the production of reactive oxidative species (Xie et al., 2004). The checkpoint kinase Chk2 has been shown to phosphorylate Che-1 at Ser-477 contributing to the maintenance of the G2/M checkpoint induced by DNA damage (Bruno et al., 2006).

**Format**

Antigen Affinity Purified from Pooled Serum

**Storage**

Maintain refrigerated at 2-8°C for up to 6 months. For long term storage store at -20°C in small aliquots to prevent freeze-thaw cycles.

**Precautions**

Anti-Che-1 (AATF) (Ser477) Antibody is for research use only and not for use in diagnostic or therapeutic procedures.

**Shipping**

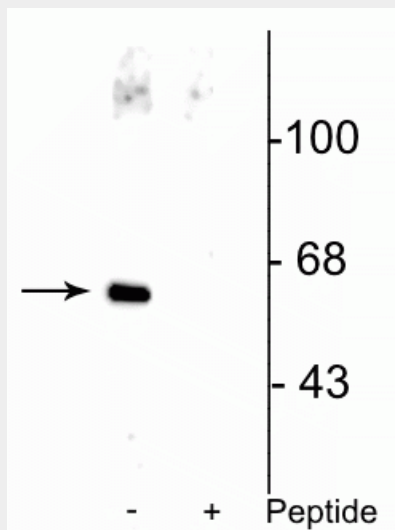
Blue Ice

**Anti-Che-1 (AATF) (Ser477) Antibody - Protocols**

Provided below are standard protocols that you may find useful for product applications.

- [Western Blot](#)
- [Blocking Peptides](#)
- [Dot Blot](#)
- [Immunohistochemistry](#)
- [Immunofluorescence](#)
- [Immunoprecipitation](#)
- [Flow Cytometry](#)
- [Cell Culture](#)

#### Anti-Che-1 (AATF) (Ser477) Antibody - Images



Western blot of HeLa cell lysate showing specific immunolabeling of the ~66 kDa Che-1 protein phosphorylated at Ser477 in the first lane (-). Phosphospecificity is shown in the second lane (+) where immunolabeling is blocked by preadsorption of the phosphopeptide used as the antigen, but not by the corresponding non-phosphopeptide (not shown).

#### Anti-Che-1 (AATF) (Ser477) Antibody - Background

Che-1, also known as AATF (apoptosis-antagonizing transcription factor), is a RNA polymerase II-binding protein involved in regulating the transcription factor E2F and promoting cell cycle progression (Burgdorf et al., 2004). It has been suggested that Che-1 may act as a neuroprotective factor against Abeta-induced apoptosis by suppressing the production of reactive oxidative species (Xie et al., 2004). The checkpoint kinase Chk2 has been shown to phosphorylate Che-1 at Ser-477 contributing to the maintenance of the G2/M checkpoint induced by DNA damage (Bruno et al., 2006).