

Anti-Clavesin Antibody

Our Anti-Clavesin primary antibody from PhosphoSolutions is rabbit polyclonal. It detects rat Clavesin
Catalog # AN1338

Specification

Anti-Clavesin Antibody - Product Information

Application	WB
Primary Accession	A6JF06
Reactivity	Bovine
Host	Rabbit
Clonality	Polyclonal
Isotype	IgG
Calculated MW	40667

Anti-Clavesin Antibody - Additional Information

Gene ID **366311**

Other Names

4 antibody, C6orf212 antibody, C6orf213 antibody, Clavesin 1 antibody, Clavesin 2 antibody, CRALBPL antibody, FLJ37248 antibody, MGC120572 antibody, MGC34646 antibody, OTTHUMP00000017122 antibody, Retinaldehyde binding protein 1 like 1 antibody, Retinaldehyde binding protein 1 like 2 antibody, RLBP1L1 antibody, RLBP1L2 antibody

Target/Specificity

Clavesin (clathrin vesicle associated Sec14 protein) is a novel neuron specific protein that has recently been identified and shown to be required for normal morphology of late endosomes and/or lysosomes as lentiviral-mediated knockdown of clavesin in hippocampal neurons causes lysosomal defects (Kato et al., 2009). Additionally, upregulation of clavesin in human hepatocellular carcinoma has recently been demonstrated thus making it a useful marker for this disease state (Zhao et al., 2008).

Format

Affinity Purified

Storage

Maintain refrigerated at 2-8°C for up to 6 months. For long term storage store at -20°C in small aliquots to prevent freeze-thaw cycles.

Precautions

Anti-Clavesin Antibody is for research use only and not for use in diagnostic or therapeutic procedures.

Shipping

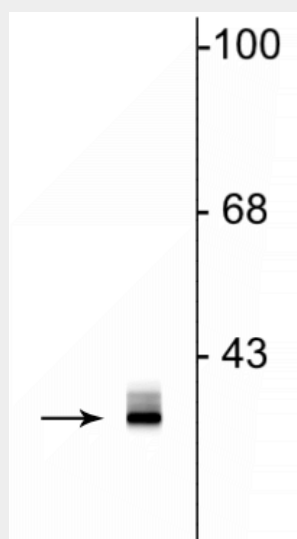
Blue Ice

Anti-Clavesin Antibody - Protocols

Provided below are standard protocols that you may find useful for product applications.

- [Western Blot](#)
- [Blocking Peptides](#)
- [Dot Blot](#)
- [Immunohistochemistry](#)
- [Immunofluorescence](#)
- [Immunoprecipitation](#)
- [Flow Cytometry](#)
- [Cell Culture](#)

Anti-Clavesin Antibody - Images



Western blot of rat hippocampal lysate showing specific immunolabeling of the ~35 kDa clavesin protein.

Anti-Clavesin Antibody - Background

Clavesin (clathrin vesicle associated Sec14 protein) is a novel neuron specific protein that has recently been identified and shown to be required for normal morphology of late endosomes and/or lysosomes as lentiviral-mediated knockdown of clavesin in hippocampal neurons causes lysosomal defects (Kato et al., 2009). Additionally, upregulation of clavesin in human hepatocellular carcinoma has recently been demonstrated thus making it a useful marker for this disease state (Zhao et al., 2008).