

Anti-CNP (2,3-cyclic nucleotide-3-phosphodiesterase) Antibody

Our Anti-CNP (2,3-cyclic nucleotide-3-phosphodiesterase) primary antibody from PhosphoSolutions is r
Catalog # AN1342

Specification**Anti-CNP (2,3-cyclic nucleotide-3-phosphodiesterase) Antibody - Product Information**

Application	WB
Primary Accession	P13233
Reactivity	Bovine, Chicken, Drosophila
Host	Rabbit
Clonality	Polyclonal
Isotype	IgG
Calculated MW	47268

Anti-CNP (2,3-cyclic nucleotide-3-phosphodiesterase) Antibody - Additional Information

Gene ID **25275**

Other Names

2" antibody, 2'3' cyclic nucleotide 3' phosphodiesterase antibody, 3"-cyclic-nucleotide 3"-phosphodiesterase antibody, CN37_HUMAN antibody, CNP 1 antibody, CNP antibody, CNP1 antibody, CNPase antibody

Target/Specificity

2,3-cyclic nucleotide-3-phosphodiesterase (CNP) is a membrane bound, microtubule associated protein that is among the most abundant myelin proteins of the CNS. It is thought that CNP may serve as a regulator of tubulin polymerization and of microtubule distribution (Bifulco et al., 2002). It was recently found that CNP may also function as a possible linker protein anchoring microtubules to the plasma membrane via a 13 residue C-terminal CNP fragment (Bifulco et al., 2002, Esposito et al., 2008).

Dilution

WB~~1:1000

Format

Neat serum

Storage

Maintain refrigerated at 2-8°C for up to 6 months. For long term storage store at -20°C in small aliquots to prevent freeze-thaw cycles.

Precautions

Anti-CNP (2,3-cyclic nucleotide-3-phosphodiesterase) Antibody is for research use only and not for use in diagnostic or therapeutic procedures.

Shipping

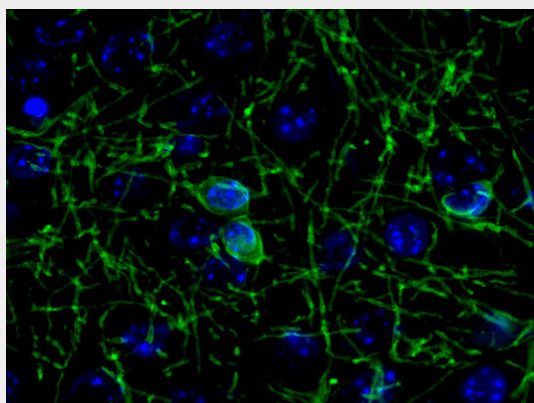
Blue Ice

Anti-CNP (2,3-cyclic nucleotide-3-phosphodiesterase) Antibody - Protocols

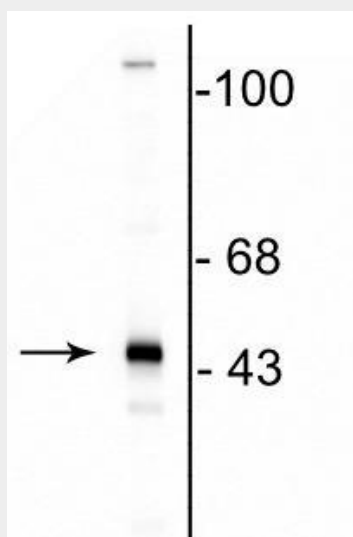
Provided below are standard protocols that you may find useful for product applications.

- [Western Blot](#)
- [Blocking Peptides](#)
- [Dot Blot](#)
- [Immunohistochemistry](#)
- [Immunofluorescence](#)
- [Immunoprecipitation](#)
- [Flow Cytometry](#)
- [Cell Culture](#)

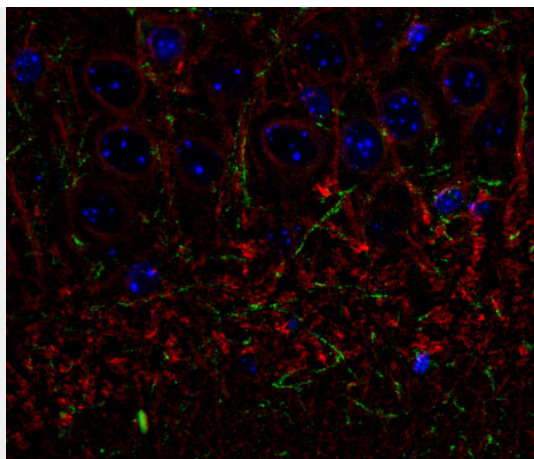
Anti-CNP (2,3-cyclic nucleotide-3-phosphodiesterase) Antibody - Images



Immunochemical staining of saline treated mouse cortex cryosections showing specific labeling of CNP(cat. 325-CNP, green, 1:500). The blue is staining DNA. The bisected longitudinal mouse brain was fixed for 18h in 4% paraformaldehyde, washed, and cryoprotected in 30% sucrose overnight. The cryosections were antigen retrieved in citrate buffer, blocked in 20% normal goat serum for 1 hr. Photo courtesy of Robert Wine.



Western blot of rat brain lysate showing the specific immunolabeling of the ~46 kDa CNP protein.



Immunolabelling of the CA3 subfield of mouse hippocampus labeling CNP (cat. 325-CNP, green, 1:500) and β -III tubulin(cat. 2020-TUB, 1:1000, red). The blue is DAPI staining DNA. Original magnification is 40X. Photo courtesy Rob Wine.

Anti-CNP (2,3-cyclic nucleotide-3-phosphodiesterase) Antibody - Background

2,3-cyclic nucleotide-3-phosphodiesterase (CNP) is a membrane bound, microtubule associated protein that is among the most abundant myelin proteins of the CNS. It is thought that CNP may serve as a regulator of tubulin polymerization and of microtubule distribution (Bifulco et al., 2002). It was recently found that CNP may also function as a possible linker protein anchoring microtubules to the plasma membrane via a 13 residue C-terminal CNP fragment (Bifulco et al., 2002, Esposito et al., 2008).