

Anti-Connexin 43 Antibody

Our Anti-Connexin 43 Antibody primary antibody from PhosphoSolutions is rabbit polyclonal. It detects
Catalog # AN1345

Specification

Anti-Connexin 43 Antibody - Product Information

Application	WB
Primary Accession	P08050
Reactivity	Bovine
Host	Rabbit
Clonality	Polyclonal
Isotype	IgG
Calculated MW	43031

Anti-Connexin 43 Antibody - Additional Information

Gene ID **24392**

Other Names

Connexin 43 antibody, Connexin-43 antibody, Cx 43 antibody, Cx43 antibody, CXA1_HUMAN antibody, DFNB38 antibody, Gap junction 43 kDa heart protein antibody, Gap junction alpha-1 protein antibody, Gap junction protein alpha 1 43kDa (connexin 43) antibody, Gap junction protein alpha 1 43kDa antibody, Gap junction protein alpha like antibody, GJA 1 antibody, Gja1 antibody, GJAL antibody, ODD antibody, ODDD antibody, ODDO antibody, SDTY3 antibody

Target/Specificity

Gap junctional intercellular communication is thought to play a key role in development and may also be involved in epilepsy (Aronica et al., 2001). Connexin43 forms gap-junctional channels and regulates the permeability of these gap junctions to small organic molecules. Permeability of connexin43 is known to be regulated by phosphorylation at Ser-368 by protein kinase C (Yogo et al., 2002; Bao et al., 2004a). Phosphorylation of Ser-368 by PKC induces a conformational change of connexin43 that results in a decrease in gap junction permeability (Bao et al., 2004b).

Dilution

WB~~1:1000

Format

Antigen Affinity Purified from Pooled Serum

Storage

Maintain refrigerated at 2-8°C for up to 6 months. For long term storage store at -20°C in small aliquots to prevent freeze-thaw cycles.

Precautions

Anti-Connexin 43 Antibody is for research use only and not for use in diagnostic or therapeutic procedures.

Shipping

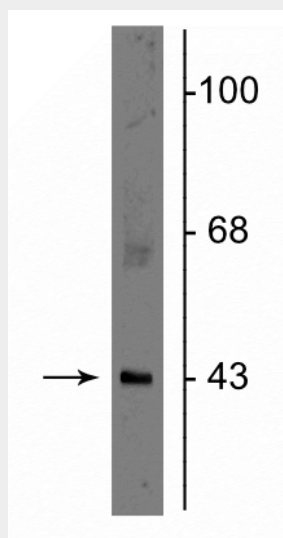
Blue Ice

Anti-Connexin 43 Antibody - Protocols

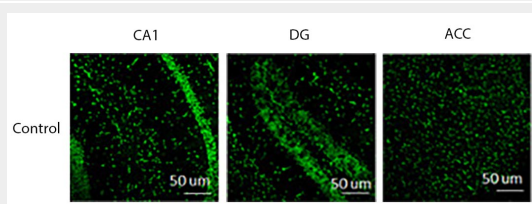
Provided below are standard protocols that you may find useful for product applications.

- [Western Blot](#)
- [Blocking Peptides](#)
- [Dot Blot](#)
- [Immunohistochemistry](#)
- [Immunofluorescence](#)
- [Immunoprecipitation](#)
- [Flow Cytometry](#)
- [Cell Culture](#)

Anti-Connexin 43 Antibody - Images



Western blot of rat cerebellar lysate showing specific immunolabeling of the ~43 kDa connexin43 protein.



Immunolabeling on astroglial in the CA1 and DG mouse hippocampus, and anterior cingulate cortex (ACC) specifically labeling Connexin43 (Cat no 327-CON, green, 1:200). Image from publication. CC-BY-4.0 PMID: 37239279

Anti-Connexin 43 Antibody - Background

Gap junctional intercellular communication is thought to play a key role in development and may also be involved in epilepsy (Aronica et al., 2001). Connexin43 forms gap-junctional channels and regulates the permeability of these gap junctions to small organic molecules. Permeability of connexin43 is known to be regulated by phosphorylation at Ser-368 by protein kinase C (Yogo et al., 2002; Bao et al., 2004a). Phosphorylation of Ser-368 by PKC induces a conformational change of connexin43 that results in a decrease in gap junction permeability (Bao et al., 2004b).