

Anti-DsbA-L (Disulfide-bond-A oxidoreductase-like protein) Antibody
Our Anti-DsbA-L (Disulfide-bond-A oxidoreductase-like protein) primary antibody from PhosphoSolutions
Catalog # AN1368

Specification

Anti-DsbA-L (Disulfide-bond-A oxidoreductase-like protein) Antibody - Product Information

Application	WB
Primary Accession	Q9DCM2
Host	Rabbit
Clonality	Polyclonal
Isotype	IgG
Calculated MW	25704

Anti-DsbA-L (Disulfide-bond-A oxidoreductase-like protein) Antibody - Additional Information

Gene ID **76263**

Other Names

DSBA like thioredoxin domain containing protein antibody, Glutathione S-transferase kappa 1, EC:2.5.1.18, GST 13-13, GST class-kappa, GST kappa, GSTK1-1, mGSTK1, Glutathione S-transferase subunit 13

Target/Specificity

Disulfide-bond-A oxidoreductase-like protein (DsbA-L, previously named as GST Kappa) is an adiponectin-interacting protein. DsbA-L is highly expressed in adipose tissue, and its expression level is negatively correlated with obesity in mice and humans. DsbA-L expression in 3T3-L1 adipocytes is stimulated by the insulin sensitizer rosiglitazone and inhibited by the inflammatory cytokine TNFalpha. Polymorphism of DsbA-L gene has recently been implicated in insulin secretion and body fat distribution (Gao F et al., 2009). Overexpression of DsbA-L promotes adiponectin multimerization while suppressing DsbA-L expression by RNAi markedly and selectively reduces adiponectin levels and secretion in 3T3-L1 adipocytes. Recent studies identify DsbA-L as a key regulator for adiponectin biosynthesis (Liu et al., 2008).

Dilution

WB~~1:1000

Format

Serum

Storage

Maintain refrigerated at 2-8°C for up to 6 months. For long term storage store at -20°C in small aliquots to prevent freeze-thaw cycles.

Precautions

Anti-DsbA-L (Disulfide-bond-A oxidoreductase-like protein) Antibody is for research use only and not for use in diagnostic or therapeutic procedures.

Shipping

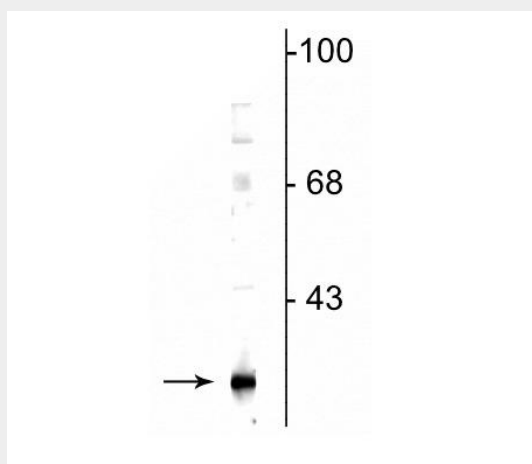
Blue Ice

Anti-DsbA-L (Disulfide-bond-A oxidoreductase-like protein) Antibody - Protocols

Provided below are standard protocols that you may find useful for product applications.

- [Western Blot](#)
- [Blocking Peptides](#)
- [Dot Blot](#)
- [Immunohistochemistry](#)
- [Immunofluorescence](#)
- [Immunoprecipitation](#)
- [Flow Cytometry](#)
- [Cell Culture](#)

Anti-DsbA-L (Disulfide-bond-A oxidoreductase-like protein) Antibody - Images



Western blot of mouse adipose tissue lysate showing specific immunolabeling of the ~25 kDa DsbA-L protein.

Anti-DsbA-L (Disulfide-bond-A oxidoreductase-like protein) Antibody - Background

Disulfide-bond-A oxidoreductase-like protein (DsbA-L, previously named as GST Kappa) is an adiponectin-interacting protein. DsbA-L is highly expressed in adipose tissue, and its expression level is negatively correlated with obesity in mice and humans. DsbA-L expression in 3T3-L1 adipocytes is stimulated by the insulin sensitizer rosiglitazone and inhibited by the inflammatory cytokine TNF α . Polymorphism of DsbA-L gene has recently been implicated in insulin secretion and body fat distribution (Gao F et al., 2009). Overexpression of DsbA-L promotes adiponectin multimerization while suppressing DsbA-L expression by RNAi markedly and selectively reduces adiponectin levels and secretion in 3T3-L1 adipocytes. Recent studies identify DsbA-L as a key regulator for adiponectin biosynthesis (Liu et al., 2008).