

Anti-eIF4A2 Antibody

Our Anti-eIF4A2 rabbit polyclonal primary antibody from PhosphoSolutions is produced in-house. It de
Catalog # AN1373

Specification

Anti-eIF4A2 Antibody - Product Information

Primary Accession	Q14240
Host	Rabbit
Clonality	Polyclonal
Isotype	IgG
Calculated MW	46402

Anti-eIF4A2 Antibody - Additional Information

Gene ID **1974**

Other Names

ATP dependent RNA helicase eIF4A 2 antibody, ATP-dependent RNA helicase eIF4A-2 antibody, BM-010 antibody, DDX2B antibody, eIF 4A II antibody, eIF-4A-II antibody, EIF4A antibody, eIF4A II antibody, eIF4A-II antibody, EIF4A2 antibody, EIF4F antibody, Eukaryotic initiation factor 4A II antibody, Eukaryotic initiation factor 4A-II antibody, eukaryotic translation initiation factor 4A isoform 2 antibody, Eukaryotic translation initiation factor 4A2 antibody, IF4A2_HUMAN antibody, N-terminally processed antibody

Target/Specificity

The eIF4A, eukaryotic initiation factor 4A, are a set of proteins, eIF4A1, eIF4A2, and eIF4A3, that belong to the extensive DEAD-box RNA helicase family (Weinstein et al., 1997). They are involved in many aspects of RNA metabolism by virtue of their RNA-binding capacity and ATPase activity (Lu et al., 2014). eIF4A2 is a highly conserved gene for one of the protein-synthesis initiation factors involved in the binding of mRNA to the ribosome (Gingras et al., 1999). In humans eIF4A2 is expressed in all normal tissues, though highly expressed in skeletal muscle (Sudo et al., 1995). Studies suggest eIF4A2 may play a role in some cancers, specifically breast and lung cancer, along with melanoma (Shaoyan et al., 2013).

Format

Antigen Affinity Purified from Pooled Serum

Storage

Maintain refrigerated at 2-8°C for up to 6 months. For long term storage store at -20°C in small aliquots to prevent freeze-thaw cycles.

Precautions

Anti-eIF4A2 Antibody is for research use only and not for use in diagnostic or therapeutic procedures.

Shipping

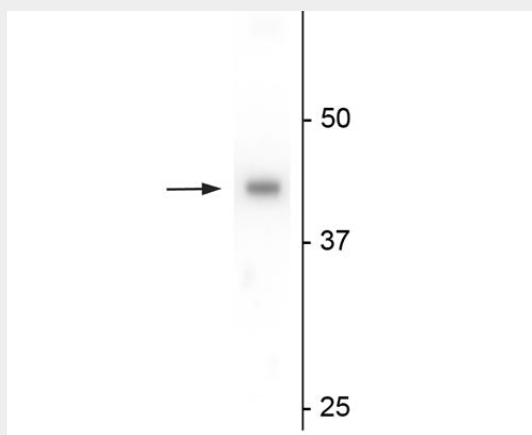
Blue Ice

Anti-eIF4A2 Antibody - Protocols

Provided below are standard protocols that you may find useful for product applications.

- [Western Blot](#)
- [Blocking Peptides](#)
- [Dot Blot](#)
- [Immunohistochemistry](#)
- [Immunofluorescence](#)
- [Immunoprecipitation](#)
- [Flow Cytometry](#)
- [Cell Culture](#)

Anti-eIF4A2 Antibody - Images



Western blot of mouse testes lysate showing specific immunolabeling of the ~46 kDa eukaryotic initiation factor 4A2, eIF4A2, protein.

Anti-eIF4A2 Antibody - Background

The eIF4A, eukaryotic initiation factor 4A, are a set of proteins, eIF4A1, eIF4A2, and eIF4A3, that belong to the extensive DEAD-box RNA helicase family (Weinstein et al., 1997). They are involved in many aspects of RNA metabolism by virtue of their RNA-binding capacity and ATPase activity (Lu et al., 2014). eIF4A2 is a highly conserved gene for one of the protein-synthesis initiation factors involved in the binding of mRNA to the ribosome (Gingras et al., 1999). In humans eIF4A2 is expressed in all normal tissues, though highly expressed in skeletal muscle (Sudo et al., 1995). Studies suggest eIF4A2 may play a role in some cancers, specifically breast and lung cancer, along with melanoma (Shaoyan et al., 2013).