

**Anti-Elk-1 (Ser383) Antibody**

**Our Anti-Elk-1 (Ser383) rabbit polyclonal phosphospecific primary antibody from PhosphoSolutions is  
Catalog # AN1374**

**Specification**

---

**Anti-Elk-1 (Ser383) Antibody - Product Information**

Primary Accession	<a href="#">P19419</a>
Host	<b>Rabbit</b>
Clonality	<b>Polyclonal</b>
Isotype	<b>IgG</b>
Calculated MW	<b>44888</b>

**Anti-Elk-1 (Ser383) Antibody - Additional Information**

Gene ID **2002**

**Other Names**

ELK 1 antibody, Elk1 antibody, ELK1 member of ETS oncogene family antibody, ELK1 protein antibody, ELK1, ETS transcription factor antibody, ELK1\_HUMAN antibody, ELK2 member of ETS oncogene family antibody, ETS domain containing protein Elk 1 antibody, ETS domain containing protein Elk1 antibody, ETS domain protein Elk1 antibody, ETS domain-containing protein Elk-1 antibody, ETS like gene 1 antibody, Member of ETS oncogene family antibody, Oncogene Elk1 antibody, Tyrosine kinase (ELK1) oncogene antibody

**Target/Specificity**

Elk-1 is a transcription factor involved in mediating gene transcription in response to growth factors (Hill and Treisman, 1995). Elk-1 is thought to be phosphorylated by MAP kinase at Ser-383 and phosphorylation at this site is essential for the transcriptional activity of Elk-1 (Li et al., 2003). Phosphorylation of Elk-1 has also been implicated in synaptic plasticity in the adult hippocampus (Thiels et al., 2002).

**Format**

Antigen Affinity Purified from Pooled Serum

**Storage**

Maintain refrigerated at 2-8°C for up to 6 months. For long term storage store at -20°C in small aliquots to prevent freeze-thaw cycles.

**Precautions**

Anti-Elk-1 (Ser383) Antibody is for research use only and not for use in diagnostic or therapeutic procedures.

**Shipping**

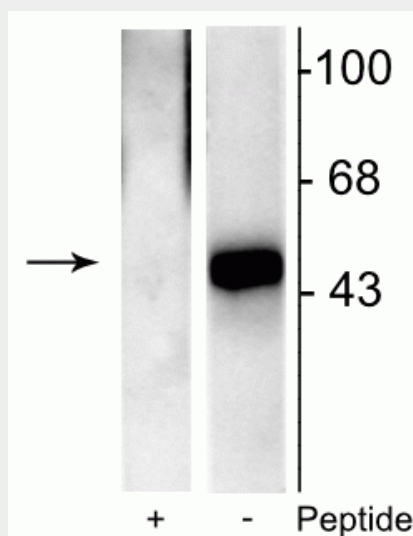
Blue Ice

**Anti-Elk-1 (Ser383) Antibody - Protocols**

Provided below are standard protocols that you may find useful for product applications.

- [Western Blot](#)
- [Blocking Peptides](#)
- [Dot Blot](#)
- [Immunohistochemistry](#)
- [Immunofluorescence](#)
- [Immunoprecipitation](#)
- [Flow Cytometry](#)
- [Cell Culture](#)

#### Anti-Elk-1 (Ser383) Antibody - Images



Western blot of recombinant Elk-1 showing specific immunolabeling of the ~46 kDa Elk-1 phosphorylated at Ser383 in the right lane (-). Phosphospecificity is shown in the left lane (+) where immunolabeling is blocked by preadsorption of the phosphopeptide used as the antigen, but not by the corresponding non-phosphopeptide (not shown).

#### Anti-Elk-1 (Ser383) Antibody - Background

Elk-1 is a transcription factor involved in mediating gene transcription in response to growth factors (Hill and Treisman, 1995). Elk-1 is thought to be phosphorylated by MAP kinase at Ser-383 and phosphorylation at this site is essential for the transcriptional activity of Elk-1 (Li et al., 2003). Phosphorylation of Elk-1 has also been implicated in synaptic plasticity in the adult hippocampus (Thiels et al., 2002).