

Anti-EphrinB (Tyr331) Antibody

Our Anti-EphrinB (Tyr331) rabbit polyclonal phosphospecific primary antibody from PhosphoSolutions i
Catalog # AN1377

Specification

Anti-EphrinB (Tyr331) Antibody - Product Information

Primary Accession	P28693
Host	Rabbit
Clonality	Polyclonal
Isotype	IgG
Calculated MW	111963

Anti-EphrinB (Tyr331) Antibody - Additional Information

Gene ID **396513**

Other Names

CEK5 ligand antibody, EFNB1 antibody, ELK L antibody, ELK ligand antibody, ELKL antibody, EPH related receptor tyrosine kinase ligand 2 antibody, Ephrin B1 antibody, Ephrin B2 antibody, LERK2 antibody

Target/Specificity

EphrinB proteins are thought to play key roles in cellular functions as diverse as neuronal migration and blood vessel development (Flanagan and Vanderhaeghen, 1998; Dufour et al., 2003; Oike et al., 2002). EphrinB molecules expressed at the membrane surface bind to the EphB family receptors on target cells during cell-to cell contact. This interaction leads to cell signaling in the target cell but also generates a reverse signal in the cell expressing EphrinB on its surface. This reverse signaling event is thought to be critical for vessel maturation and neuronal development. Importantly, tyrosine phosphorylation of EphrinB is thought to be a critical component of this reverse signaling event (Palmer et al., 2002). Recent work demonstrated that Tyr331 of EphrinB was phosphorylated in HEK293 cells after stimulation by the soluble EphB2 receptor tyrosine kinase (Kalo et al., 2001).

Format

Antigen Affinity Purified from Pooled Serum

Storage

Maintain refrigerated at 2-8°C for up to 6 months. For long term storage store at -20°C in small aliquots to prevent freeze-thaw cycles.

Precautions

Anti-EphrinB (Tyr331) Antibody is for research use only and not for use in diagnostic or therapeutic procedures.

Shipping

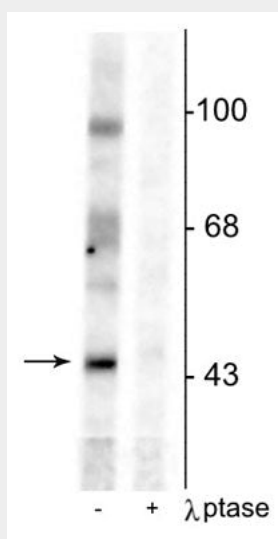
Blue Ice

Anti-EphrinB (Tyr331) Antibody - Protocols

Provided below are standard protocols that you may find useful for product applications.

- [Western Blot](#)
- [Blocking Peptides](#)
- [Dot Blot](#)
- [Immunohistochemistry](#)
- [Immunofluorescence](#)
- [Immunoprecipitation](#)
- [Flow Cytometry](#)
- [Cell Culture](#)

Anti-EphrinB (Tyr331) Antibody - Images



Western blot of rat testes lysate showing specific immunolabeling of the ~46 kDa EphrinB phosphorylated at Tyr331 in the first lane (-). Phosphospecificity is shown in the second lane (+) where immunolabeling is completely eliminated by lysate treatment with lambda phosphatase (λ -Ptase, 800 units/1 mg protein for 30 min).

Anti-EphrinB (Tyr331) Antibody - Background

EphrinB proteins are thought to play key roles in cellular functions as diverse as neuronal migration and blood vessel development (Flanagan and Vanderhaeghen, 1998; Dufour et al., 2003; Oike et al., 2002). EphrinB molecules expressed at the membrane surface bind to the EphB family receptors on target cells during cell-to cell contact. This interaction leads to cell signaling in the target cell but also generates a reverse signal in the cell expressing EphrinB on its surface. This reverse signaling event is thought to be critical for vessel maturation and neuronal development. Importantly, tyrosine phosphorylation of EphrinB is thought to be a critical component of this reverse signaling event (Palmer et al., 2002). Recent work demonstrated that Tyr331 of EphrinB was phosphorylated in HEK293 cells after stimulation by the soluble EphB2 receptor tyrosine kinase (Kalo et al., 2001).