

Anti-EWS Antibody

Our Anti-EWS primary antibody from PhosphoSolutions is mouse monoclonal. It detects canine, human, m
Catalog # AN1380

Specification

Anti-EWS Antibody - Product Information

Application	WB, IHC
Primary Accession	Q01844
Reactivity	Bovine, Chicken, Drosophila
Host	Mouse
Clonality	Monoclonal
Isotype	IgG2b
Calculated MW	68478

Anti-EWS Antibody - Additional Information

Gene ID **2130**

Other Names

4 Ewing sarcoma breakpoint region 1 protein antibody, Ewing sarcoma breakpoint region 1 antibody, Ewing sarcoma breakpoint region 1 protein antibody, Ewings sarcoma EWS Fli1 type 1 oncogene antibody, EWS antibody, EWS oncogene antibody, EWS RNA binding protein 1 antibody, EWS_HUMAN antibody, EWSR 1 antibody, Ewsr1 antibody, EWSR1 protein antibody, RNA binding protein EWS antibody, RNA-binding protein EWS antibody

Target/Specificity

The Ewing Sarcoma Breakpoint Region 1 (EWSR1) gene encodes the EWS protein, which along with FUS and TAF15 comprises the FET family of RNA-binding proteins. EWS is primarily expressed in the nucleus, but has also been found in the cytoplasm of secretory cell types (Andersson et al., 2008). Defects of EWSR1 are known to cause Ewing sarcoma and have been implicated in amyotrophic lateral sclerosis (ALS) (Svetoni et al., 2016). Recently, EWS has been shown to directly interact with oncogenic ETS transcription factors in the promotion of prostate cancer (Kedage et al., 2016).

Dilution

WB~~1:1000
IHC~~1:100~500

Format

Protein G Purified

Storage

Maintain refrigerated at 2-8°C for up to 6 months. For long term storage store at -20°C in small aliquots to prevent freeze-thaw cycles.

Precautions

Anti-EWS Antibody is for research use only and not for use in diagnostic or therapeutic procedures.

Shipping

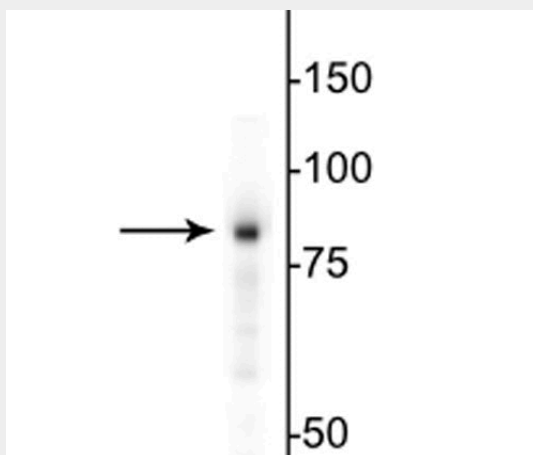
Blue Ice

Anti-EWS Antibody - Protocols

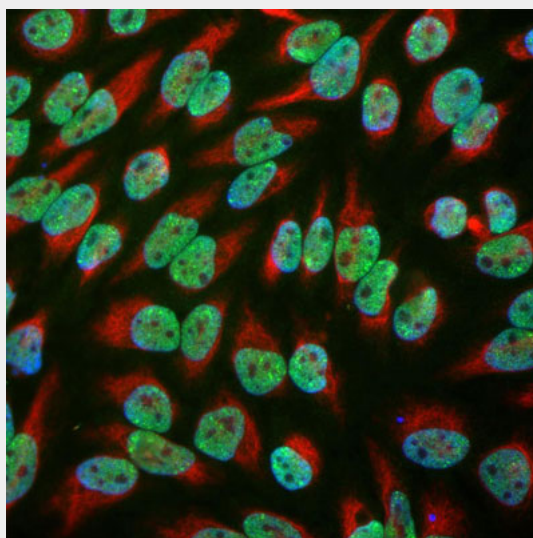
Provided below are standard protocols that you may find useful for product applications.

- [Western Blot](#)
- [Blocking Peptides](#)
- [Dot Blot](#)
- [Immunohistochemistry](#)
- [Immunofluorescence](#)
- [Immunoprecipitation](#)
- [Flow Cytometry](#)
- [Cell Culture](#)

Anti-EWS Antibody - Images



Western blot of HeLa cell lysate showing specific immunolabeling of the ~85 kDa EWS protein.



Immunofluorescence of HeLa cells showing clear localized labeling of the DNA in the nucleus with Anti-EWS (cat. 540-EWS, 1:1000, green) while Anti-Vimentin (cat. 2105-VIM, 1:5000, red) labels the cytoplasmic intermediate filament, and Hoechst DNA stain (blue).

Anti-EWS Antibody - Background

The Ewing Sarcoma Breakpoint Region 1 (EWSR1) gene encodes the EWS protein, which along with FUS and TAF15 comprises the FET family of RNA-binding proteins. EWS is primarily expressed in the nucleus, but has also been found in the cytoplasm of secretory cell types (Andersson et al., 2008). Defects of EWSR1 are known to cause Ewing sarcoma and have been implicated in amyotrophic lateral sclerosis (ALS) (Svetoni et al., 2016). Recently, EWS has been shown to directly interact with oncogenic ETS transcription factors in the promotion of prostate cancer (Kedage et al., 2016).