

Anti-FOX1 Antibody

**Our Anti-FOX1 primary antibody from PhosphoSolutions is mouse monoclonal. It detects bovine, human,
Catalog # AN1386**

Specification

Anti-FOX1 Antibody - Product Information

Application	WB, IHC
Primary Accession	O9NWB1
Reactivity	Bovine, Chicken
Host	Mouse
Clonality	Monoclonal
Isotype	IgG1
Calculated MW	42784

Anti-FOX1 Antibody - Additional Information

Gene ID **54715**

Other Names

2BP1 antibody, A2 BP1 antibody, A2BP 1 antibody, A2BP antibody, A2BP1 antibody, Ataxin 2 binding protein 1 antibody, Ataxin-2-binding protein 1 antibody, Ataxin2 binding protein 1 antibody, FOX1 antibody, Fox-1 homolog A antibody, fox-1-like RNA-binding protein 1 antibody, Hexaribonucleotide binding protein 1 antibody, Hexaribonucleotide-binding protein 1 antibody, HRNBP 1 antibody, HRNBP1 antibody, RBFox1 antibody, RFOX1_HUMAN antibody, RNA binding protein fox-1 homolog 1 antibody, RNA binding protein fox-1 homolog 1 C. elegans, homolog of 1 antibody, RNA binding protein fox-1 homolog (C. elegans) 1 antibody

Target/Specificity

FOX1, also known as ataxin-2 binding protein 1 (A2BP1), is a neuron specific RNA-binding protein that has been shown to regulate a wide range of alternative splicing events implicated in neuronal development and maturation including transcription factors and synaptic proteins (Fogel et al., 2012). Defects in FOX1 have also been associated with autism (Martin et al., 2007), attention-deficit hyperactivity disorder (Elia et al., 2010) and schizophrenia (Xu et al., 2008).

Format

Protein G Purified

Storage

Maintain refrigerated at 2-8°C for up to 6 months. For long term storage store at -20°C in small aliquots to prevent freeze-thaw cycles.

Precautions

Anti-FOX1 Antibody is for research use only and not for use in diagnostic or therapeutic procedures.

Shipping

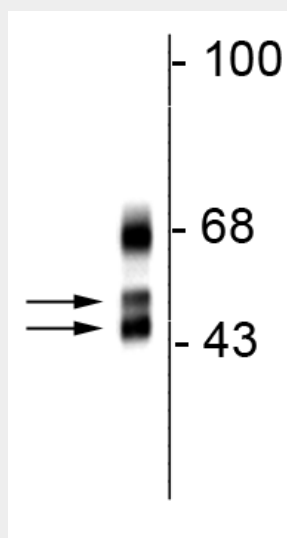
Blue Ice

Anti-FOX1 Antibody - Protocols

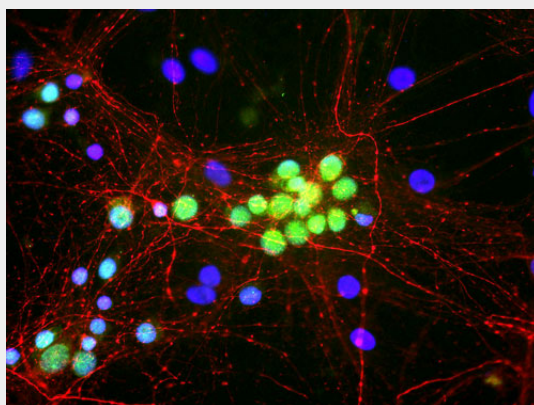
Provided below are standard protocols that you may find useful for product applications.

- [Western Blot](#)
- [Blocking Peptides](#)
- [Dot Blot](#)
- [Immunohistochemistry](#)
- [Immunofluorescence](#)
- [Immunoprecipitation](#)
- [Flow Cytometry](#)
- [Cell Culture](#)

Anti-FOX1 Antibody - Images



Western blot of rat cortical lysate showing specific immunolabeling of the ~46/48 kDa FOX1 protein.



Immunofluorescence of cultured rat neurons showing nuclear and distal cytoplasmic labeling of FOX1 (cat. 581-FOX1, 1:500, green).

Anti-FOX1 Antibody - Background

FOX1, also known as ataxin-2 binding protein 1 (A2BP1), is a neuron specific RNA-binding protein that has been shown to regulate a wide range of alternative splicing events implicated in neuronal development and maturation including transcription factors and synaptic proteins (Fogel et al.,

2012). Defects in FOX1 have also been associated with autism (Martin et al., 2007), attention-deficit hyperactivity disorder (Elia et al., 2010) and schizophrenia (Xu et al., 2008).