

Anti-GABAA Receptor γ 2 (Ser327) Antibody

Our Anti-GABAA Receptor γ 2 (Ser327) rabbit polyclonal phosphospecific primary antibody from PhosphoS

Catalog # AN1405

Specification

Anti-GABAA Receptor γ 2 (Ser327) Antibody - Product Information

Primary Accession	P18508
Host	Rabbit
Clonality	Polyclonal
Isotype	IgG
Calculated MW	54077

Anti-GABAA Receptor γ 2 (Ser327) Antibody - Additional Information

Gene ID **29709**

Other Names

CAE 2 antibody, CAE2 antibody, ECA 2 antibody, ECA2 antibody, GABA(A) receptor gamma 2 antibody, GABA(A) receptor subunit gamma 2 antibody, GABA(A) receptor subunit gamma-2 antibody, GABR γ 2 antibody, GABRG2 antibody, Gamma aminobutyric acid (GABA) A receptor gamma 2 antibody, Gamma aminobutyric acid A receptor gamma 2 antibody, Gamma aminobutyric acid receptor gamma 2 subunit antibody, Gamma-aminobutyric acid receptor subunit gamma-2 antibody, GBRG2_HUMAN antibody, GEFSP 3 antibody, GEFSP3 antibody

Target/Specificity

Gamma-aminobutyric acid (GABA) is the primary inhibitory neurotransmitter in the central nervous system. There are two major classes of GABA receptors: the GABA-A and the GABA-B subtype of receptors. GABA-A-Rs are important therapeutic targets for a range of sedative, anxiolytic, and hypnotic agents and are implicated in several diseases including epilepsy, anxiety, depression, and substance abuse. The GABA-A-R is a multimeric subunit complex. To date six α s, four β s and four γ s, plus alternative splicing variants of some of these subunits, have been identified (Olsen and Tobin, 1990; Whiting et al., 1999; Ogris et al., 2004). Injection in oocytes or mammalian cell lines of cRNA coding for α - and β -subunits results in the expression of functional GABA-A-Rs sensitive to GABA. However, coexpression of a γ -subunit is required for benzodiazepine modulation. It has recently been suggested that PKC ϵ regulates the sensitivity of GABA-A α 1 β 2 γ 2 receptors to ethanol and benzodiazepines through phosphorylation of serine 327 in the large intracellular loop of γ 2 (Qi et al., 2007)

Format

Antigen Affinity Purified from Pooled Serum

Storage

Maintain refrigerated at 2-8°C for up to 6 months. For long term storage store at -20°C in small aliquots to prevent freeze-thaw cycles.

Precautions

Anti-GABAA Receptor γ 2 (Ser327) Antibody is for research use only and not for use in diagnostic or therapeutic procedures.

Shipping

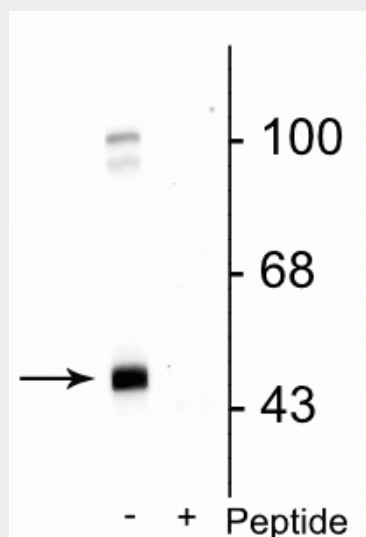
Blue Ice

Anti-GABAA Receptor $\gamma 2$ (Ser327) Antibody - Protocols

Provided below are standard protocols that you may find useful for product applications.

- [Western Blot](#)
- [Blocking Peptides](#)
- [Dot Blot](#)
- [Immunohistochemistry](#)
- [Immunofluorescence](#)
- [Immunoprecipitation](#)
- [Flow Cytometry](#)
- [Cell Culture](#)

Anti-GABAA Receptor $\gamma 2$ (Ser327) Antibody - Images



Western blot of rat cortical lysate showing specific immunolabeling of the ~45 kDa GABAA $\gamma 2$ protein phosphorylated at Ser327 in the first lane (-). Phosphospecificity is shown in the second lane (+) where immunolabeling is blocked by preadsorption of the phosphopeptide used as the antigen, but not by the corresponding non-phosphopeptide (not shown).

Anti-GABAA Receptor $\gamma 2$ (Ser327) Antibody - Background

Gamma-aminobutyric acid (GABA) is the primary inhibitory neurotransmitter in the central nervous system. There are two major classes of GABA receptors: the GABA-A and the GABA-B subtype of receptors. GABA-A-Rs are important therapeutic targets for a range of sedative, anxiolytic, and hypnotic agents and are implicated in several diseases including epilepsy, anxiety, depression, and substance abuse. The GABA-A-R is a multimeric subunit complex. To date six α s, four β s and four γ s, plus alternative splicing variants of some of these subunits, have been identified (Olsen and Tobin, 1990; Whiting et al., 1999; Ogris et al., 2004). Injection in oocytes or mammalian cell lines of cRNA coding for α - and β -subunits results in the expression of functional GABA-A-Rs sensitive to GABA. However, coexpression of a γ -subunit is required for benzodiazepine modulation. It has recently been suggested that PKC ϵ regulates the sensitivity of GABA-A $\alpha 1\beta 2\gamma 2$ receptors to ethanol and benzodiazepines through phosphorylation of serine 327 in the large intracellular loop of $\gamma 2$ (Qi et al., 2007)