

**Anti-GluR1 Antibody**

**Our Anti-GluR1 primary antibody from PhosphoSolutions is mouse monoclonal. It detects mouse and rat**  
**Catalog # AN1415**

**Specification**

---

**Anti-GluR1 Antibody - Product Information**

Primary Accession	<a href="#">P19490</a>
Host	<b>Mouse</b>
Clonality	<b>Monoclonal</b>
Isotype	<b>IgG2a</b>
Calculated MW	<b>101579</b>

**Anti-GluR1 Antibody - Additional Information**

Gene ID **50592**

**Other Names**

GLUR 1 antibody, GLUR A antibody, AMPA 1 antibody, AMPA selective glutamate receptor 1 antibody, AMPA-selective glutamate receptor 1 antibody, GluA1 antibody, GLUH1 antibody, GluR K1 antibody, GluR-1 antibody, GluR-A antibody, GluR-K1 antibody, GLUR1 antibody, GLURA antibody, GluRK1 antibody, Glutamate receptor 1 antibody, Glutamate receptor ionotropic AMPA 1 antibody, Glutamate receptor ionotropic antibody, Glutamate receptor, ionotropic, AMPA 1 antibody, Gria1 antibody, GRIA1\_HUMAN antibody, HBGR1 antibody, MGC133252 antibody, OTTHUMP00000160643 antibody, OTTHUMP00000165781 antibody, THUMP00000224241 antibody, OTTHUMP00000224242 antibody, OTTHUMP00000224243 antibody

**Target/Specificity**

The ion channels activated by glutamate are typically divided into two classes. Those that are sensitive to N-methyl-D-aspartate (NMDA) are designated NMDA receptors (NMDAR) while those activated by  $\alpha$ -amino-3-hydroxy-5-methyl-4-isoxalone propionic acid (AMPA) are known as AMPA receptors (AMPA). The AMPAR are comprised of four distinct glutamate receptor subunits designated (GluR1-4) and they play key roles in virtually all excitatory neurotransmission in the brain (Keinänen et al., 1990;Hollmann and Heinemann, 1994).

**Format**

Protein G Purified

**Storage**

Maintain refrigerated at 2-8°C for up to 6 months. For long term storage store at -20°C in small aliquots to prevent freeze-thaw cycles.

**Precautions**

Anti-GluR1 Antibody is for research use only and not for use in diagnostic or therapeutic procedures.

**Shipping**

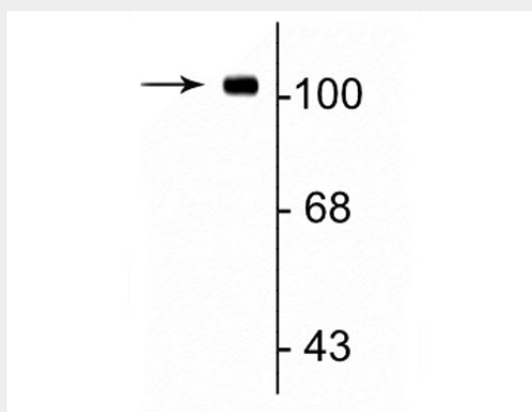
Blue Ice

## Anti-GluR1 Antibody - Protocols

Provided below are standard protocols that you may find useful for product applications.

- [Western Blot](#)
- [Blocking Peptides](#)
- [Dot Blot](#)
- [Immunohistochemistry](#)
- [Immunofluorescence](#)
- [Immunoprecipitation](#)
- [Flow Cytometry](#)
- [Cell Culture](#)

## Anti-GluR1 Antibody - Images



Western blot of rat hippocampal lysate showing specific immunolabeling of the ~105 kDa GluR1 protein.

## Anti-GluR1 Antibody - Background

The ion channels activated by glutamate are typically divided into two classes. Those that are sensitive to N-methyl-D-aspartate (NMDA) are designated NMDA receptors (NMDAR) while those activated by  $\alpha$ -amino-3-hydroxy-5-methyl-4-isoxalone propionic acid (AMPA) are known as AMPA receptors (AMPA). The AMPAR are comprised of four distinct glutamate receptor subunits designated (GluR1-4) and they play key roles in virtually all excitatory neurotransmission in the brain (Keinänen et al., 1990; Hollmann and Heinemann, 1994).