

Anti-GluR2/3 Antibody

Our Anti-GluR2/3 rabbit polyclonal primary antibody from PhosphoSolutions is produced in-house. It d
Catalog # AN1419

Specification

Anti-GluR2/3 Antibody - Product Information

| | |
|-------------------|------------------------|
| Primary Accession | P19491 |
| Reactivity | Bovine |
| Host | Rabbit |
| Clonality | Polyclonal |
| Isotype | IgG |
| Calculated MW | 98688 |

Anti-GluR2/3 Antibody - Additional Information

Gene ID **29627**

Other Names

AMPA selective glutamate receptor 2 antibody, AMPA selective glutamate receptor 3 antibody, GluR K2 antibody, GluR K3 antibody, GLURB antibody, GLURC antibody, GLUTAMATE RECEPTOR 2 antibody, GLUTAMATE RECEPTOR 3 antibody, Glutamate receptor ionotropic AMPA 2 antibody, Glutamate receptor ionotropic AMPA 3 antibody, GRIA2 antibody, GRIA3 antibody

Target/Specificity

The ion channels activated by glutamate are typically divided into two classes. Those that are sensitive to N-methyl-D-aspartate (NMDA) are designated NMDA receptors (NMDAR) while those activated by α -amino-3-hydroxy-5-methyl-4-isoxalone propionic acid (AMPA) are known as AMPA receptors (AMPA). The AMPAR are comprised of four distinct glutamate receptor subunits designated (GluR1-4) and they play key roles in virtually all excitatory neurotransmission in the brain (Keinänen et al., 1990;Hollmann and Heinemann, 1994). The GluR2 subunit is widely expressed throughout the nervous system where it is thought to play key roles in synaptic plasticity and learning and memory (Duprat et al., 2003;Seidenman et al., 2003;Chung et al., 2003;Yan et al., 2002).

Format

Antigen Affinity Purified from Pooled Serum

Storage

Maintain refrigerated at 2-8°C for up to 6 months. For long term storage store at -20°C in small aliquots to prevent freeze-thaw cycles.

Precautions

Anti-GluR2/3 Antibody is for research use only and not for use in diagnostic or therapeutic procedures.

Shipping

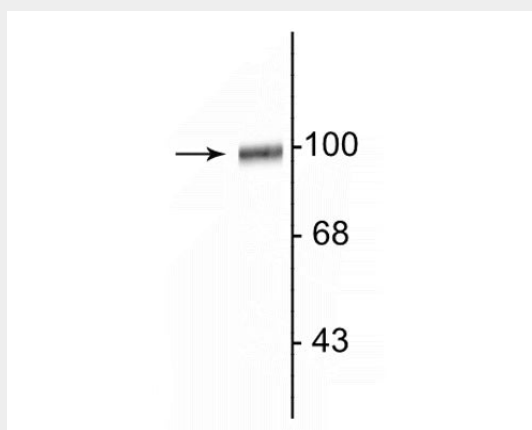
Blue Ice

Anti-GluR2/3 Antibody - Protocols

Provided below are standard protocols that you may find useful for product applications.

- [Western Blot](#)
- [Blocking Peptides](#)
- [Dot Blot](#)
- [Immunohistochemistry](#)
- [Immunofluorescence](#)
- [Immunoprecipitation](#)
- [Flow Cytometry](#)
- [Cell Culture](#)

Anti-GluR2/3 Antibody - Images



Western blot of rat hippocampal lysate showing specific immunolabeling of the ~100 kDa GluR2/3 protein.

Anti-GluR2/3 Antibody - Background

The ion channels activated by glutamate are typically divided into two classes. Those that are sensitive to N-methyl-D-aspartate (NMDA) are designated NMDA receptors (NMDAR) while those activated by α -amino-3-hydroxy-5-methyl-4-isoxalone propionic acid (AMPA) are known as AMPA receptors (AMPA). The AMPAR are comprised of four distinct glutamate receptor subunits designated (GluR1-4) and they play key roles in virtually all excitatory neurotransmission in the brain (Keinänen et al., 1990; Hollmann and Heinemann, 1994). The GluR2 subunit is widely expressed throughout the nervous system where it is thought to play key roles in synaptic plasticity and learning and memory (Duprat et al., 2003; Seidenman et al., 2003; Chung et al., 2003; Yan et al., 2002).