

Anti-Glycogen synthase kinase 3 B (GSK3B) (Ser9) Antibody
Our Anti-Glycogen synthase kinase 3 B (GSK3B) (Ser9) rabbit polyclonal
phosphospecific primary antib
Catalog # AN1423

Specification

Anti-Glycogen synthase kinase 3 B (GSK3B) (Ser9) Antibody - Product Information

Primary Accession	P18266
Host	Rabbit
Clonality	Polyclonal
Isotype	IgG
Calculated MW	46742

Anti-Glycogen synthase kinase 3 B (GSK3B) (Ser9) Antibody - Additional Information

Gene ID **84027**

Other Names

Glycogen Synthase Kinase 3 Beta antibody, Glycogen synthase kinase-3 beta antibody, GSK 3 beta antibody, GSK-3 beta antibody, GSK3B antibody, GSK3B_HUMAN antibody, GSK3beta isoform antibody, Serine/threonine-protein kinase GSK3B antibody

Target/Specificity

Glycogen synthase kinase 3 (GSK3) is a serine/threonine kinase that is involved in the regulation of many signaling pathways. To date, 2 isoforms have been identified: GSK3 α and GSK3 β . Specifically, GSK3 β has been shown to play a key inhibitory role in both the insulin and Wnt signaling pathways (Papkoff and Aikawa 1998). It has been suggested that Ser-9 phosphorylation underlies the inhibition of GSK3 β by insulin (Sutherland et al., 1993).

Format

Antigen Affinity Purified from Pooled Serum

Storage

Maintain refrigerated at 2-8°C for up to 6 months. For long term storage store at -20°C in small aliquots to prevent freeze-thaw cycles.

Precautions

Anti-Glycogen synthase kinase 3 B (GSK3B) (Ser9) Antibody is for research use only and not for use in diagnostic or therapeutic procedures.

Shipping

Blue Ice

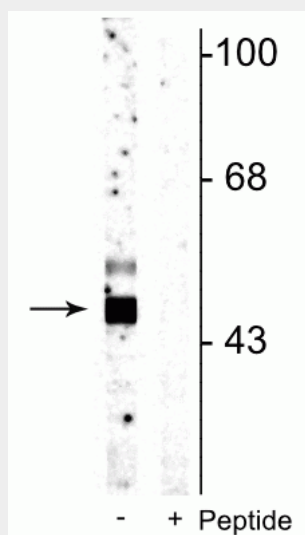
Anti-Glycogen synthase kinase 3 B (GSK3B) (Ser9) Antibody - Protocols

Provided below are standard protocols that you may find useful for product applications.

- [Western Blot](#)
- [Blocking Peptides](#)

- [Dot Blot](#)
- [Immunohistochemistry](#)
- [Immunofluorescence](#)
- [Immunoprecipitation](#)
- [Flow Cytometry](#)
- [Cell Culture](#)

Anti-Glycogen synthase kinase 3 B (GSK3B) (Ser9) Antibody - Images



Western blot of rat cortical lysate showing specific immunolabeling of the ~46 kDa GSK3 β protein phosphorylated at Ser9 in the first lane (-). Phosphospecificity is shown in the second lane (+) where immunolabeling is blocked by preadsorption of the phosphopeptide used as the antigen, but not by the corresponding non-phosphopeptide (not shown).

Anti-Glycogen synthase kinase 3 B (GSK3B) (Ser9) Antibody - Background

Glycogen synthase kinase 3 (GSK3) is a serine/threonine kinase that is involved in the regulation of many signaling pathways. To date, 2 isoforms have been identified: GSK3 α and GSK3 β . Specifically, GSK3 β has been shown to play a key inhibitory role in both the insulin and Wnt signaling pathways (Papkoff and Aikawa 1998). It has been suggested that Ser-9 phosphorylation underlies the inhibition of GSK3 β by insulin (Sutherland et al., 1993).