

**Anti-GRIP1 Associated Protein 1 (GRASP1) Antibody**  
**Our Anti-GRIP1 Associated Protein 1 (GRASP1) rabbit polyclonal primary antibody from PhosphoSolutions**  
**Catalog # AN1424**

## Specification

---

### Anti-GRIP1 Associated Protein 1 (GRASP1) Antibody - Product Information

Primary Accession	<a href="#">O9JHZ4</a>
Host	Rabbit
Clonality	Polyclonal
Isotype	IgG
Calculated MW	96074

### Anti-GRIP1 Associated Protein 1 (GRASP1) Antibody - Additional Information

Gene ID **116493**

#### Other Names

DKFZp434P0630 antibody, DXImx47e antibody, GRAP1\_HUMAN antibody, GRASP 1 antibody, GRASP-1 antibody, GRASP1 antibody, GRIP 1 associated protein 1 antibody, GRIP associated protein 1 antibody, GRIP1 associated protein 1 antibody, GRIP1-associated protein 1 antibody, GRIPAP 1 antibody, GRIPAP1 antibody, KIAA1167 antibody, MGC126593 antibody, MGC126595 antibody, MPMGp800B12492Q3 antibody, Sfc10 antibody, TAMALIN antibody

#### Target/Specificity

PDZ domain-containing proteins, such as PSD-95 and GRIP are thought to play key roles in glutamate receptor plasticity. GRIP-associated proteins (GRASPs) that bind to distinct PDZ domains within GRIP also play key roles in regulation of glutamate receptor function. GRASP-1 is a neuronal rasGEF associated with GRIP and AMPA receptors in vivo (Scannevin and Huganir, 2000). Recent work suggests that GRASP-1 may regulate neuronal ras signaling and contribute to the regulation of AMPA receptor distribution by NMDA receptor activity (Ye et al., 2000).

#### Format

Antigen Affinity Purified from Pooled Serum

#### Storage

Maintain refrigerated at 2-8°C for up to 6 months. For long term storage store at -20°C in small aliquots to prevent freeze-thaw cycles.

#### Precautions

Anti-GRIP1 Associated Protein 1 (GRASP1) Antibody is for research use only and not for use in diagnostic or therapeutic procedures.

#### Shipping

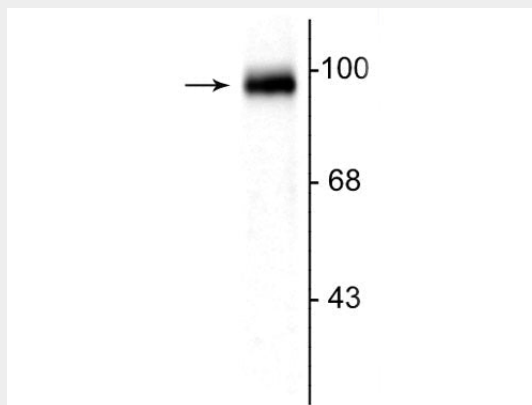
Blue Ice

### Anti-GRIP1 Associated Protein 1 (GRASP1) Antibody - Protocols

Provided below are standard protocols that you may find useful for product applications.

- [Western Blot](#)
- [Blocking Peptides](#)
- [Dot Blot](#)
- [Immunohistochemistry](#)
- [Immunofluorescence](#)
- [Immunoprecipitation](#)
- [Flow Cytometry](#)
- [Cell Culture](#)

#### Anti-GRIP1 Associated Protein 1 (GRASP1) Antibody - Images



Western blot of rat cerebellar lysate showing the specific immunolabeling of the ~95 kDa GRASP protein.

#### Anti-GRIP1 Associated Protein 1 (GRASP1) Antibody - Background

PDZ domain-containing proteins, such as PSD-95 and GRIP are thought to play key roles in glutamate receptor plasticity. GRIP-associated proteins (GRASPs) that bind to distinct PDZ domains within GRIP also play key roles in regulation of glutamate receptor function. GRASP-1 is a neuronal rasGEF associated with GRIP and AMPA receptors in vivo (Scannevin and Huganir, 2000). Recent work suggests that GRASP-1 may regulate neuronal ras signaling and contribute to the regulation of AMPA receptor distribution by NMDA receptor activity (Ye et al., 2000).